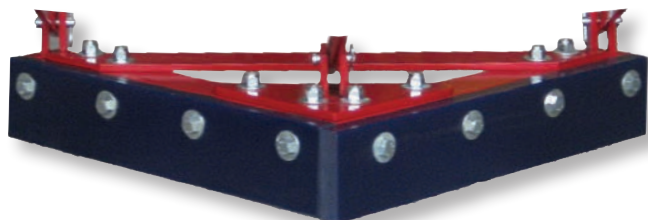




E3 V-PLOW

These V-Plows are the xtreme and mean business. Heavy duty build with a 3 point mounting system, never worry about keeping our V-plow centered on your belt.

4" & 6" Blade Heights Available



No Chatter & No Cutting

V-Plows 18-72" Belt Width

Features and Benefits

- ✦ 3 point mounting system
- ✦ Safety chain included
- ✦ Long life urethane blade
- ✦ Heavy gauge steel construction



Protect your belt from puncture and divert material away from your tail pulley

Premium Urethane Blade

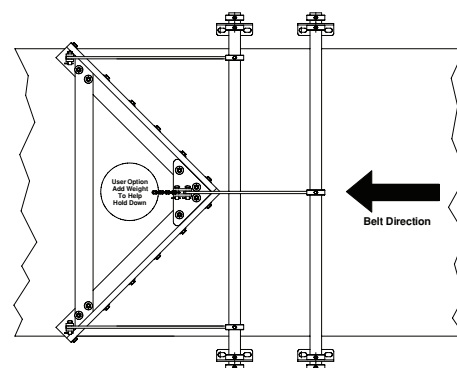
Our urethane blade is the only choice you need.

E3 V-Plow with 4" Blade

Item Number	Belt Width
E3VP18-4	18"
E3VP24-4	24"
E3VP30-4	30"
E3VP36-4	36"
E3VP42-4	42"
E3VP48-4	48"
E3VP54-4	54"
E3VP60-4	60"
E3VP72-4	72"

E3 V-Plow with 6" Blade

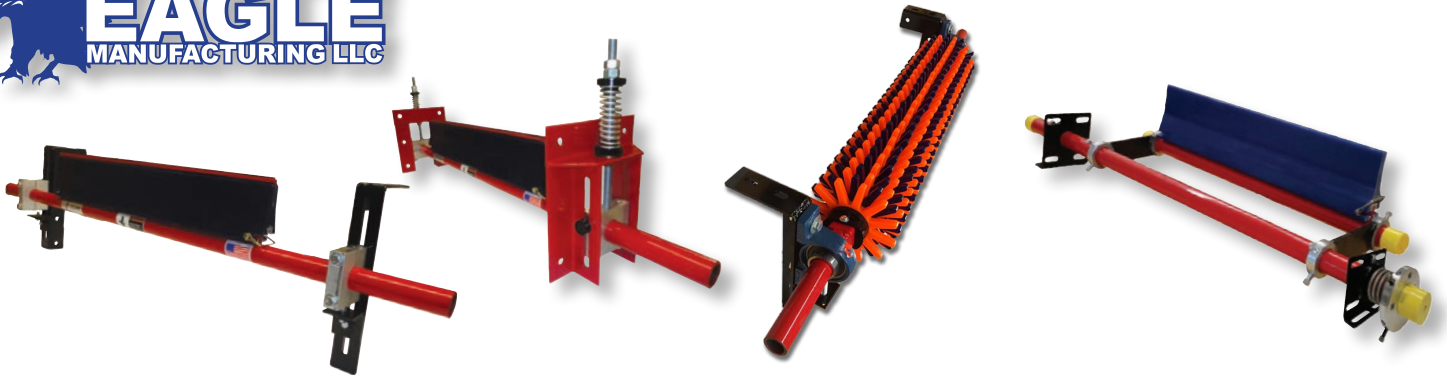
Item Number	Belt Width
E3VP18-6	18"
E3VP24-6	24"
E3VP30-6	30"
E3VP36-6	36"
E3VP42-6	42"
E3VP48-6	48"
E3VP54-6	54"
E3VP60-6	60"
E3VP72-6	72"





SECONDARY CLEANER

Selection Chart



SERIES	TENSIONER TYPE	BLADE HEIGHT	VULCANIZED BELTS	MECHANICAL SPLICED BELTS	TEMP. RATING	BELT WIDTH AVAILABLE
E7SC	MANUAL	6" (177mm)	Can use Urethane or Carbide Tipped blade	Use Urethane Blade Only	-30°F to 212°F -35°C to 100°C	18" to 72" (457 to 1828mm)
E8SC	SPRING	6" (177mm)	Can use Urethane or Carbide Tipped blade	Use Urethane Blade Only	-30°F to 212°F -35°C to 100°C	18" to 72" (457 to 1828mm)
E12SC	EAGLE TORSION	6" (177mm)	Can use Urethane or Carbide Tipped blade	Use Urethane Blade Only	-30°F to 212°F -35°C to 100°C	18" to 72" (457 to 1828mm)
PSMC	MANUAL	8" POLY STARS	Chevron Belt Only	Chevron Belt Only	-30°F to 212°F -35°C to 100°C	18" to 72" (457 to 1828mm)
E3 V-PLOW	MANUAL	4" or 6" (101 or 152mm)	YES	YES	-30°F to 212°F -35°C to 100°C	18" to 72" (457 to 1828mm)
E9 Diagonal Plow	MANUAL	4" or 6" (101 or 152mm)	YES	YES	-30°F to 212°F -35°C to 100°C	18" to 72" (457 to 1828mm)

Note: This chart is designed as a recommendation only.

Standard Features

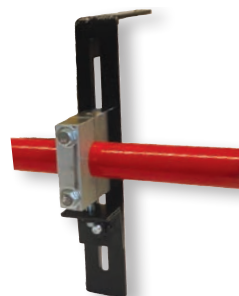
- ✦ All metal components are powder coated
- ✦ All tubes are schedule 80 wall thickness
- ✦ Stainless Steel available
- ✦ All series come with our Ev-R-Wear blade unless otherwise specified.

Blade Recommendations

- ✦ Vulcanized belts use blade material and belt tip code
M-GC (Gladiator Blade)
M-GA (AR300)
- ✦ Mechanical spliced belts use blade material and blade tip code
M-UR (Ev-R-Wear Blade)

Tensioning Systems

MANUAL



SPRING



The fastest and safest secondary blade you will ever replace.