



E8 SECONDARY CLEANER

Mine Duty

The Mine Duty E8 Series Cleaners are spring tensioned for constant blade pressure on the most demanding belts. The new gladiator blade is designed for efficient cleaning, low maintenance, and a quick one pin release for easy blade replacement.

The fastest and safest secondary blade you will ever replace.



Blade Tip Options

- 1) Tungsten Carbide
- 2) AR300
- 3) Urethane

Blade Material Options

Adjustable Tensioner

Mounting Bracket & Mounting Tube Material Options

Split Tube Clamp

**Cleaners 18-72" Belt Width
Standard Blades Are Full Belt Width**

Features and Benefits

- ✦ Single blade design will not damage your belt like segmented blades. No need for fancy, expensive cartridges like other OEMs, just pull one pin, remove blade and replace.
- ✦ Adjustable spring tensioning system allows for easy tensioning and easy adjustments.
- ✦ Split tube clamp designed for setting blade attack angle quickly. This feature also allows for easy installation of mounting tube.
- ✦ Compatible with reversing belts.
- ✦ Mounting bracket and mounting tube made from heavy duty steel that is powder coated. We also offer stainless steel construction.

Designed with your maintenance personnel's safety and time in mind!

E8SC mine duty Secondary Belt Cleaner

Specifications and Guidelines

Belt Speed

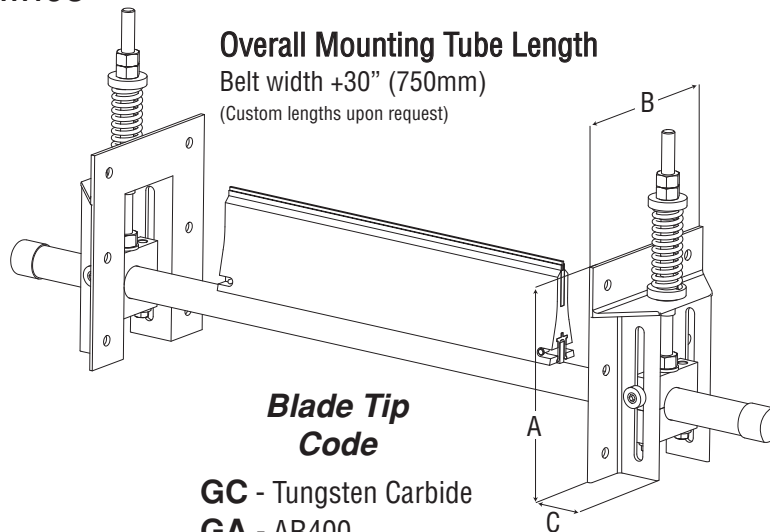
Max 1000 FPM (5m/sec)

Temperature Rating

-30°F to 212°F (-35°C to 100°C)

Belt Widths Available

18" to 72" (450 to 1800 mm)



Overall Mounting Tube Length

Belt width +30" (750mm)

(Custom lengths upon request)

BRACKET DIMENSIONS	
A	13
B	10 ³ / ₄
C	3

Ordering Part Number

NOMENCLATURE

Cleaner Series

E8SC - **M** - **GC** - **36**

*For All Stainless Steel
Construction add SS
to cleaner series*

E8SCSS

Blade Material Code

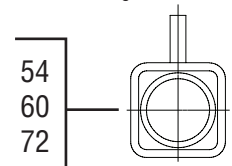
M - Ev-r-wear
C - Chemical
H - High Heat (Max 300°F/150°C)
W - Food Grade (Pure White)

Material meets FDA criteria for the following:
CFR21.177.1680 / CFR21.177.2600

Belt Width

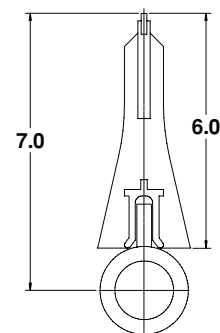
18
24
30
36
42
48

Additional steel square
tubing for extra strength

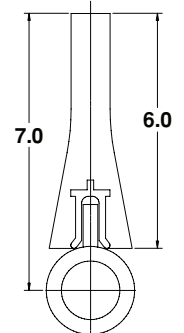


Blade Recommendations

- ✦ Vulcanized belts use blade material and belt tip code
M-GC (Gladiator Blade)
- ✦ Mechanical spliced belts use blade material and blade tip code
M-UR (Ev-r-wear Blade)
M-GA (AR400)



Gladiator Blade
Design



Ev-r-Wear Blade
Design



www.americaneaglemanufacturing.com

1-866-713-8985 fax (252) 633-5487

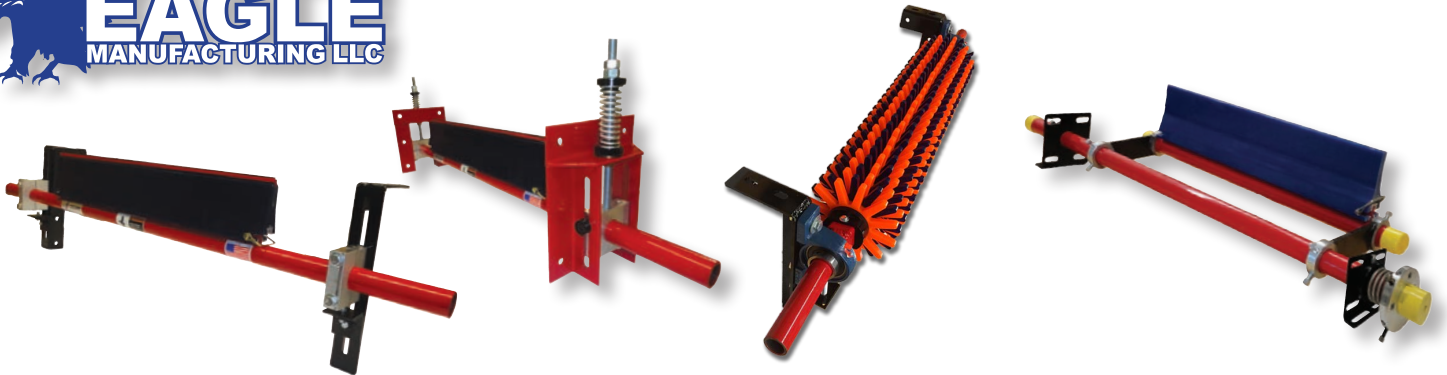


CAT-E8SC-RV0-0313



SECONDARY CLEANER

Selection Chart



SERIES	TENSIONER TYPE	BLADE HEIGHT	VULCANIZED BELTS	MECHANICAL SPLICED BELTS	TEMP. RATING	BELT WIDTH AVAILABLE
E7SC	MANUAL	6" (177mm)	Can use Urethane or Carbide Tipped blade	Use Urethane Blade Only	-30°F to 212°F -35°C to 100°C	18" to 72" (457 to 1828mm)
E8SC	SPRING	6" (177mm)	Can use Urethane or Carbide Tipped blade	Use Urethane Blade Only	-30°F to 212°F -35°C to 100°C	18" to 72" (457 to 1828mm)
E12SC	EAGLE TORSION	6" (177mm)	Can use Urethane or Carbide Tipped blade	Use Urethane Blade Only	-30°F to 212°F -35°C to 100°C	18" to 72" (457 to 1828mm)
PSMC	MANUAL	8" POLY STARS	Chevron Belt Only	Chevron Belt Only	-30°F to 212°F -35°C to 100°C	18" to 72" (457 to 1828mm)
E3 V-PLOW	MANUAL	4" or 6" (101 or 152mm)	YES	YES	-30°F to 212°F -35°C to 100°C	18" to 72" (457 to 1828mm)
E9 Diagonal Plow	MANUAL	4" or 6" (101 or 152mm)	YES	YES	-30°F to 212°F -35°C to 100°C	18" to 72" (457 to 1828mm)

Note: This chart is designed as a recommendation only.

Standard Features

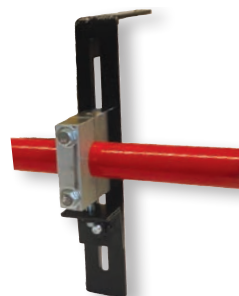
- ✦ All metal components are powder coated
- ✦ All tubes are schedule 80 wall thickness
- ✦ Stainless Steel available
- ✦ All series come with our Ev-R-Wear blade unless otherwise specified.

Blade Recommendations

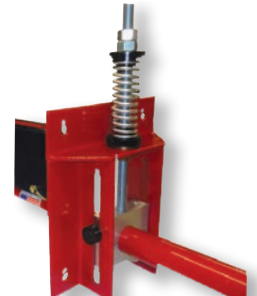
- ✦ Vulcanized belts use blade material and belt tip code
M-GC (Gladiator Blade)
M-GA (AR300)
- ✦ Mechanical spliced belts use blade material and blade tip code
M-UR (Ev-R-Wear Blade)

Tensioning Systems

MANUAL



SPRING



The fastest and safest secondary blade you will ever replace.