



# EAGLE BLADE

## Access Plate

**SAFETY ALERT**  
**New Product!**

**PATENT PENDING**

*Fabricated from  
1/4" Steel Plate  
Powder Coated*

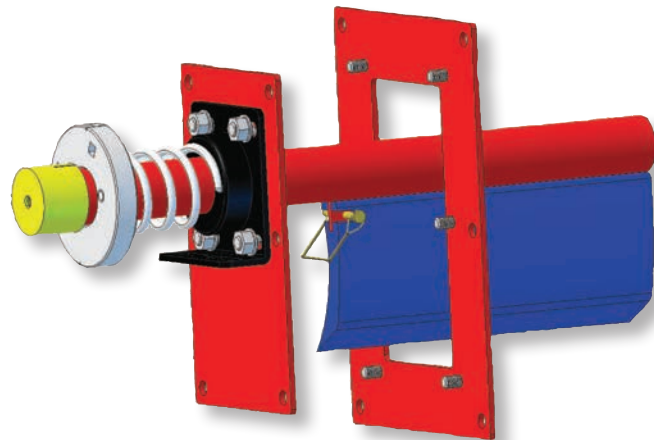
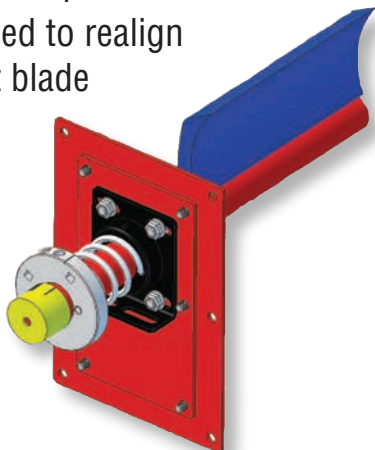


Designed to eliminate a **major safety hazard**, Eagle Blade Access Plate allows removal of the entire primary cleaner as a cartridge from one side of the headbox. This eliminates personnel getting inside the headbox, creating a safer work environment.

By removing 6 alignment bolts on access plate, and set collar on opposite side, two people can safely changeout a blade. Reinsert cleaner and reset tension in 15 minutes.

### **BENEFITS**

- ✦ Eliminates personnel inside headbox
- ✦ Easy removal
- ✦ Easy blade changeout
- ✦ Easy bolt back in place
- ✦ Eliminates need to realign cleaner or set blade attack angle.



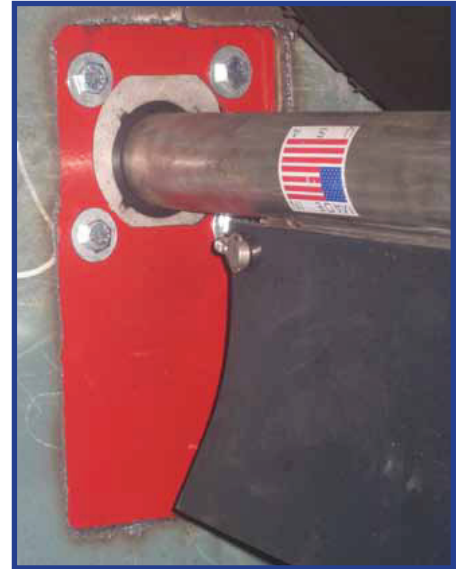
***Never get inside a headbox again  
for blade replacement!***

[www.americaneaglemanufacturing.com](http://www.americaneaglemanufacturing.com)

1-866-713-8985

CAT-EBAP-RV0-0913

# TYPICAL INSTALLATION PROCESS



## Ordering Information

Eagle Blade Access Plate

EBAP-1

Kit includes: Frame, plate and hardware

Eagle Welding Plate

EWP-1

Includes: Plate only

*“We want to thank the Progress Energy Maintenance Crew of Crystal River for the outstanding dedication to safety above and beyond the standard!”*