

IT'S THE YEAR OF  
**INNOVATION**  
AT AMERICAN EAGLE  
MANUFACTURING



## SCREENING AND LINING ACCESSORIES

# URETHANE SCREENS

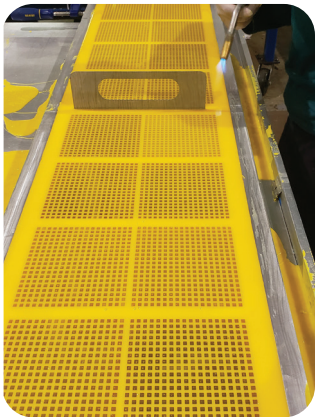
## ELIMINATE YOUR BLINDING WITH THE GLIDE-X ADDITIVE

Working with material suppliers and chemists, we have over the years helped to develop many proprietary materials for all types of applications.

### OUR NEWEST BREAKTHROUGH IS GLIDE-X

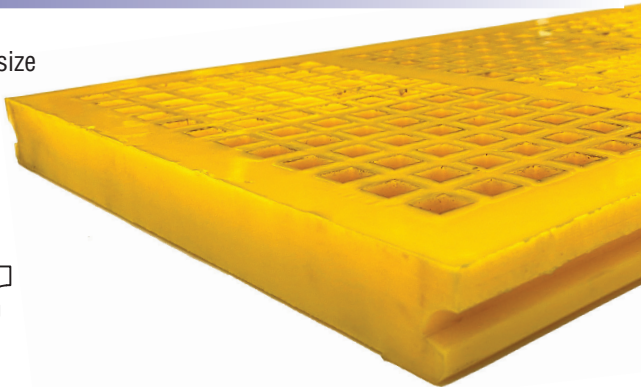
Using equipment specifically designed and engineered for this cutting-edge technology, Glide-X is homogeneously blended throughout the urethane itself, allowing the familiar slick surface of open-cast urethane to be always present, even after wear.

We offer screens in a variety of durometers and designs to best serve the needs of your specific application. Call us at 1-866-713-8985 and we can guide you through the selection process.



## TEMA™ STYLE REPLACEMENT SCREENS

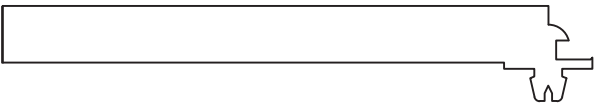
- 12x24 (300mm x 610mm) / 12x48 (300mm x 1219mm) overall screen size
- Thickness: 30mm / 40mm / 50mm / 60mm / 70mm
- 83A Glide-X material
- 70A Glide-X material skalping screens



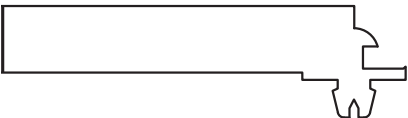
### T-1 SERIES



### T-2 SERIES



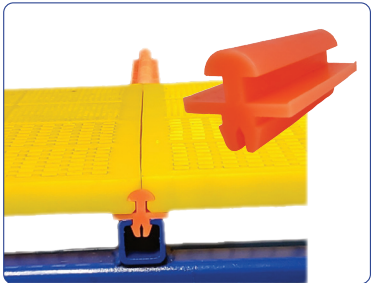
### T-3 SERIES



REQUEST A QUOTE. . .

Series Type	Size	Thickness	Opening Size	Durometer

### ACCESSORIES AVAILABLE





# PIN AND LEG SCREENS

- 12x12 panels in 4 and 6 legs
- 12x24 panels in 8 and 12 legs
- Thickness: 30mm / 40mm / 50mm / 60mm
- 83A Glide-X material
- 70A Glide-X material scalping screens

REQUEST A QUOTE. . .

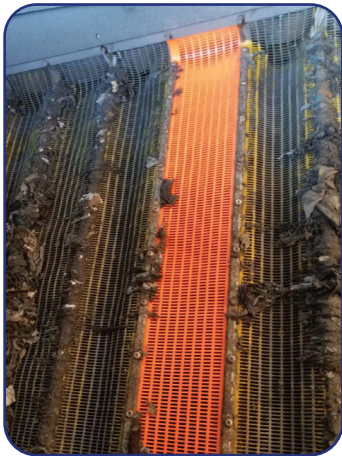
Size	Number of Legs	Thickness	Opening Size	Durometer



# FLIP FLOW SCREENS

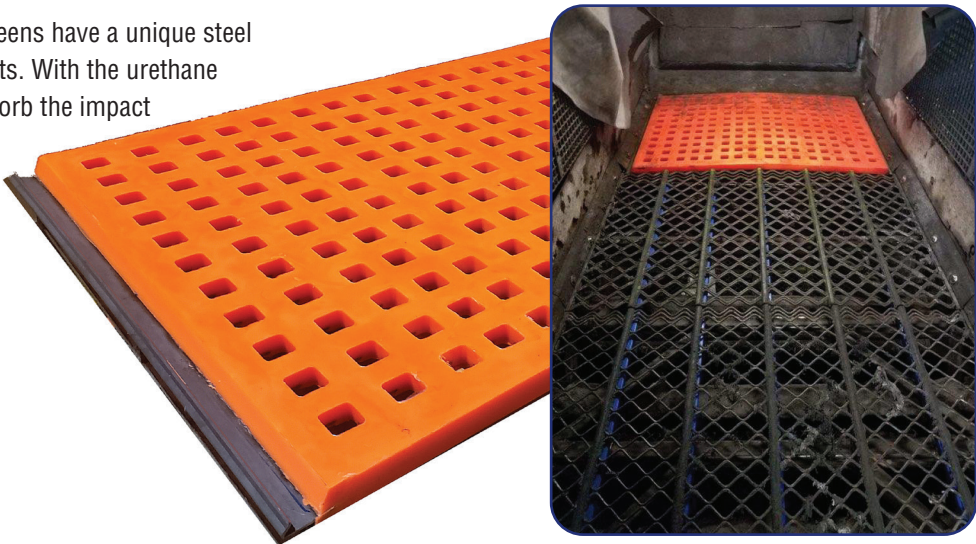
- Metal recycling industry
- Aggregate industry
- Dewatering/waste treatment industry

Our Glide-X formula has been significantly outlasting most OEM screens

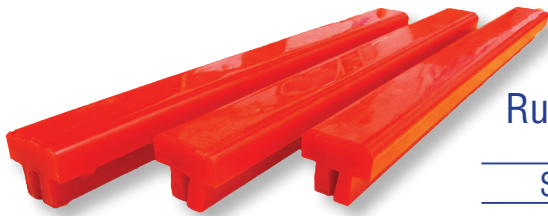


# URETHANE TENSIONED SCREENS

Our heavy-duty impact urethane tension screens have a unique steel insert that is stronger than typical wire inserts. With the urethane layer on the bottom of the screen, it can absorb the impact and last longer than its rubber counterpart, and adds the benefit of protecting the frame from damage.



# URETHANE "T" BARS



## Replacement For Rubber Bucker-Up Strips

### Shaker Screen Protection

Also referred to as buffer strip, bucker-up strip, buffer channel and crown bar channel. Our high performance urethane outlasts standard rubber.

- ✦ Abrasion resistant
- ✦ Resists cuts and tears
- ✦ Impact resistant
- ✦ Positive gripping action



Rail Size	Wear Thickness	Length	Item Number	Color	Weight
1/4"	5/8	48"	T1448	Red	3
1/4"	5/8	60"	T1460	Red	3
3/8"	5/8	48"	T3848	Orange	3
3/8"	5/8	60"	T3860	Orange	4
1/2"	5/8	48"	T1248	Blue	4
1/2"	5/8	60"	T1260	Blue	4

### BENEFITS

- ✦ Longer screen life
- ✦ Reduce noise
- ✦ Less maintenance
- ✦ Easy installation

**SOLD IN BOXES OF 25**

# EAGLE SPRAY DEFLECTOR



High performance Eagle Spray Deflectors wash your material and clean screens more efficiently than any other design.

This design allows for a larger diameter spray opening that will greatly decrease spray bar plugging. At the same time, the deflector spreads water over a larger area for improved washing, resulting in less maintenance and downtime.



Spray deflectors come with all mounting hardware.

Pipe Size	Item Number	Weight
1 1/4"	ESD-1.25	.5
1 1/2"	ESD-1.5	.5
2"	ESD-2.0	.5
3"	ESD-3.0	1

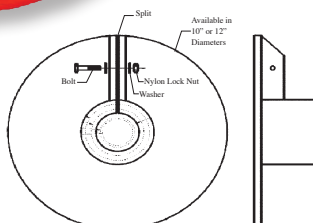
### BENEFITS & FEATURES

- ✦ Efficient material washing
- ✦ Reduce spray bar plugging
- ✦ Easy installation
- ✦ Long lasting
- ✦ Cost effective

# EAGLE SPRAY BAR SHIELD



The Eagle Spray Bar Shield easily attaches to your current spray bar to deflect spray and divert it. Designed for screening and crushing applications.



Eagle Spray Bar Shields are molded with 85A durometer high performance urethane. Fastening hardware included.

O.D.	Nominal Size	Item Number	Weight
10"	1-1/4" (1.660 Dia)	ESBS-166-10	3 1/2
10"	1-1/2" (1.875 Dia)	ESBS-187-10	3 1/2
10"	2" (2.375 Dia)	ESBS-237-10	3 1/4
10"	2-1/2" (2.875 Dia)	ESBS-287-10	3 1/4
10"	3" (3.5 Dia)	ESBS-350-10	3
12"	1-1/4" (1.660 Dia)	ESBS-166-12	4
12"	1-1/2" (1.875 Dia)	ESBS-187-12	3 3/4
12"	2" (2.375 Dia)	ESBS-237-12	3 1/2
12"	2-1/2" (2.875 Dia)	ESBS-287-12	3 1/2
12"	3" (3.5 Dia)	ESBS-350-12	3 1/4



# DEISTER® REPLACEMENT ACCESSORIES

## SPRAY BAR SHIELD



O.D.	Nominal Size	Item Number	Weight
8	2" Pipe	ESBS2-237-8	1
12	2" Pipe	ESBS2-237-12	2

## PIPE COVER



Nominal Pipe Size	Length "A"	ID "B"	Item Number	Weight
2"	48"	2-1/2	ETC-01	5

\*NOTE: 2-3/8 I.D. x 3-3/8 O.D. Half Round

## TENSION RAILS



Description	Length	Holes	Item Number	Weight
Steel w/Urethane	48	3	ETR-01	21
Steel	48	3	ETR-02	30

## TENSION RAILS

### ALL STEEL AND URETHANE COVERED TENSION RAILS

- † Hewitt-Robbins
- † Cedar Rapids
- † Tesmith
- † Pioneer
- † JCI
- † Allis-Chalmers
- † Simplicity
- † El-Jay
- † Deister

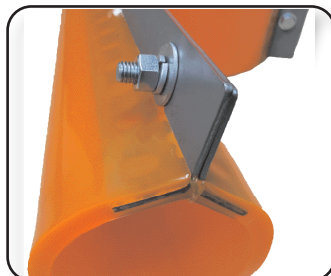


## EAGLE SCREEN DECK PIPE COVER



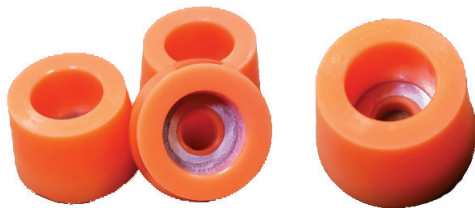
### BENEFITS

- † Bolt on tube covers
- † Orange color for high visibility
- † Material 83A urethane
- † Flange tabs for easy fastening
- † Lengths are 48" & 60" + 1"/-0
- † Easy installation



Nominal Pipe Size	Length "A"	ID "B"	Item Number	Weight
2	60	2.38	ESPC-238-60-B	13
2 1/4	60	2.63	ESPC-263-60-B	18
3	60	3.50	ESPC-350-60-B	25
4	60	4.50	ESPC-450-60-B	37
6	60	6.63	ESPC-663-60-B	47
8	60	8.63	ESPC-863-60-B	70
12	60	12.75	ESPC-1275-60-B	118
14	60	14.00	ESPC-1400-60-B	123
16	60	16.00	ESPC-1600-60-B	134
17	60	17.00	ESPC-1700-60-B	142
18	60	18.00	ESPC-1800-60-B	151

# SCREEN BOLT PROTECTORS



### BENEFITS & FEATURES

- Protects bolts from corrosion and oxidation
- Helps avoid bolt fatigue by insulating against vibration

Bolt Size	Item Number	Weight
5/8"	SBP-01	8

Sold in Boxes of 24 (8lbs per box)

# CLASSIFIER FLIGHT SHOES



Please use our worksheet when requesting a quote.

American Eagle Manufacturing has forty years experience in molding Urethane replacement classifier shoes for all major OEM equipment. AEM shoes are manufactured with high performance urethane. Engineered to offer high resistance to abrasion with low friction additives which will extend the life of our shoes in the most challenging applications.

OEM Replacement Shoes available

### BENEFITS & FEATURES

- Lighter than steel alternative
- Non-corrosive
- Less motor fatigue due to lighter weight
- Less power consumption
- Interchangeable between left and right screws

# LOG WASHER PADDLE TIPS



American Eagle Manufacturing log washer paddle tips are manufactured with high performance urethane. Engineered to offer high resistance to abrasion with low friction additives to extend the life of our paddle tips in the most challenging applications.

### BENEFITS & FEATURES

- Lighter than steel alternative
- Non-corrosive
- Less motor fatigue due to lighter weight
- Less power consumption
- Interchangeable between left and right screws



# URETHANE MAGNETIC LINER

Without careful handling, there has historically been a risk of cracking or breaking magnets during installation. Without careful placement, the magnets, standing proud from the surface of the urethane or rubber liner, could easily slide out of position.

Without careful maintenance, magnets will oxidize, reducing the bond between magnet and urethane, and eventually, compromising the pull between magnet and wall.

Our newly redesigned magnetic liner panels protect the magnet by encapsulating it while still providing superior magnetic pull to hold the liner in place, even under aggressive conditions.

No drilling, no measuring, no welding. No more chips or breaking, no more oxidation, no more losing magnets.

**“INNOVATIVE SOLUTIONS FOR EVERYDAY PROBLEMS.”**

## 12" X 12" EAGLE MAGNETIC LINER

Size	Item Number	Weight
1x12x12	EMLP-10-1212	7
1-1/2x12x12	EMLP-15-1212	10
2x12x12	EMLP-20-1212	13

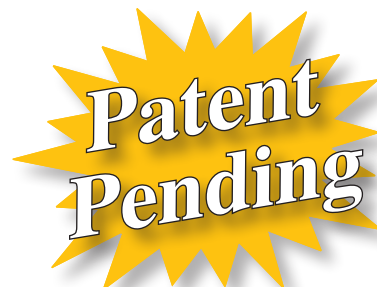
## 12" X 24" EAGLE MAGNETIC LINER

Size	Item Number	Weight
1x12x24	EMLP-10-1224	13
1-1/2x12x24	EMLP-15-1224	19
2x12x24	EMLP-20-1224	25

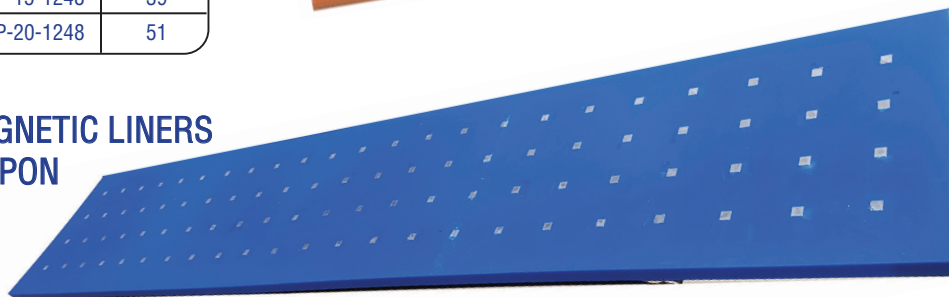
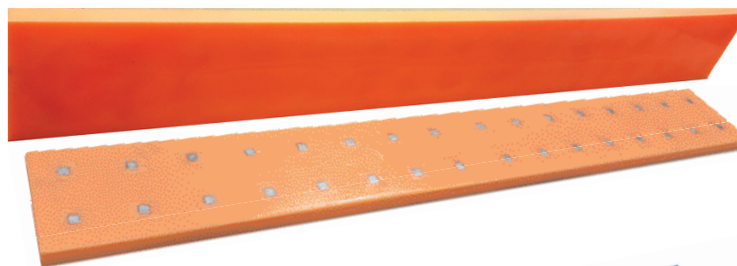
## 48" EAGLE MAGNETIC LINER

Size	Item Number	Weight
1x6x48	EMLP-10-0648	13
1-1/2x6x48	EMLP-15-0648	19
2x6x48	EMLP-20-0648	25
1x8x48	EMLP-10-0848	17
1-1/2x8x48	EMLP-15-0848	25
2x8x48	EMLP-20-0848	33
1x12x48	EMLP-10-1248	28
1-1/2x12x48	EMLP-15-1248	39
2x12x48	EMLP-20-1248	51

## CUSTOM MAGNETIC LINERS AVAILABLE UPON REQUEST

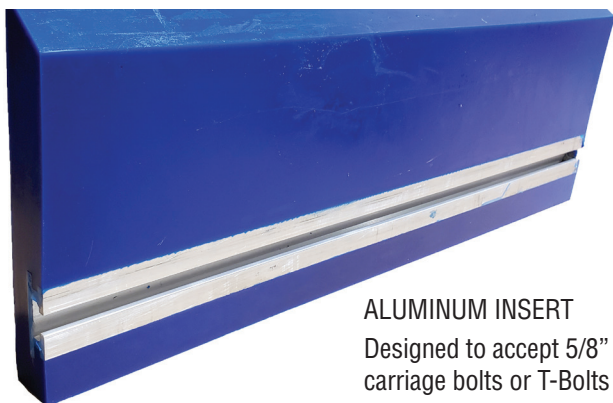


\*16 magnets per square foot  
equals 175lbs of pull per  
square foot

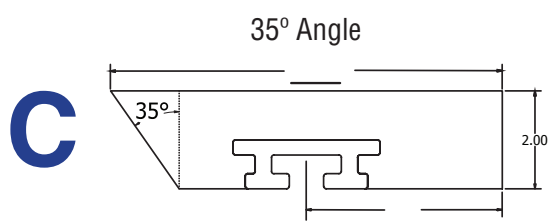
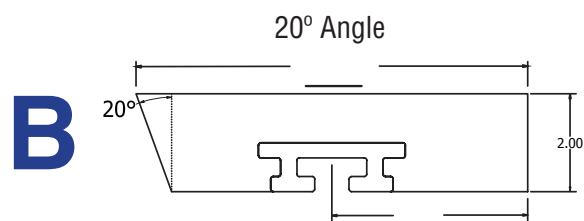
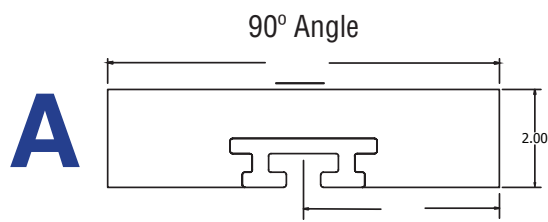


# BUMPER BOARD LINER

Bumper board is your solution for lining the inside of your chutes, hoppers and deck screen boxes. Made from high abrasion urethane for extreme impact and dust containment.



ALUMINUM INSERT  
Designed to accept 5/8"  
carriage bolts or T-Bolts



**6"**

Size	Length	Item Number	Weight
2" X 6"	48"	BB6-48-__-85	24.8
2" X 6"	60"	BB6-60-__-85	31
2" X 6"	72"	BB6-72-__-85	37.2
2" X 6"	96"	BB6-96-__-85	49.6
2" X 6"	120"	BB6-120-__-85	62

**8"**

Size	Length	Item Number	Weight
2" X 8"	48"	BB8-48-__-85	33.6
2" X 8"	60"	BB8-60-__-85	42
2" X 8"	72"	BB8-72-__-85	50.4
2" X 8"	96"	BB8-96-__-85	67.2
2" X 8"	120"	BB8-120-__-85	84

**10"**

Size	Length	Item Number	Weight
2" X 10"	48"	BB10-48-__-85	41.2
2" X 10"	60"	BB10-60-__-85	51.5
2" X 10"	72"	BB10-72-__-85	61.8
2" X 10"	96"	BB10-96-__-85	82.4
2" X 10"	120"	BB10-120-__-85	103

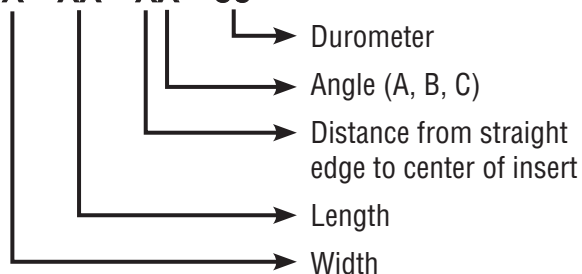
**12"**

Size	Length	Item Number	Weight
2" X 12"	48"	BB12-48-__-85	49.6
2" X 12"	60"	BB12-60-__-85	62
2" X 12"	72"	BB12-72-__-85	74.4
2" X 12"	96"	BB12-96-__-85	99.2
2" X 12"	120"	BB12-120-__-85	124

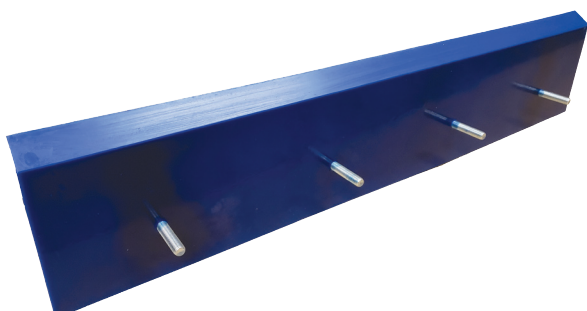
Please note:

Part number convention is as follows:

**BBX - XX - XX - 85**



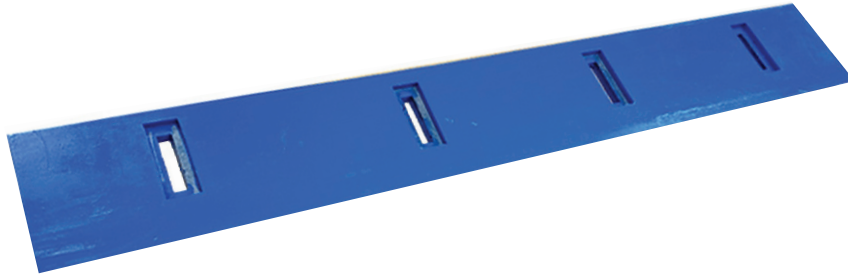
# RICHWOOD® REPLACEMENT CANOE LINER



Size	Length	Item Number	Weight
10X1-1/2	48"	UL2-10-1500-48	65
12" X 2-1/2"	48"	UL2-12-2500-48	95



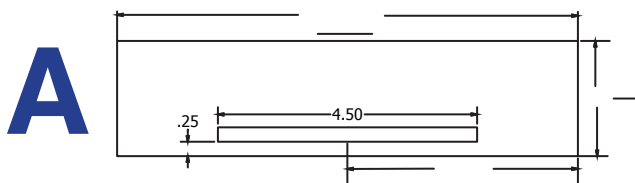
# URETHANE CANOE LINER



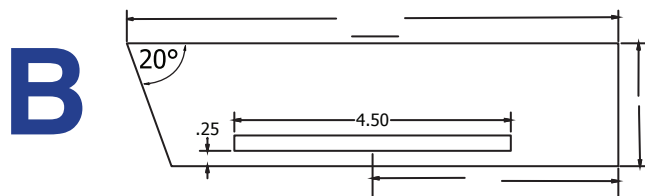
Steel insert to accommodate 5/8 carriage bolt



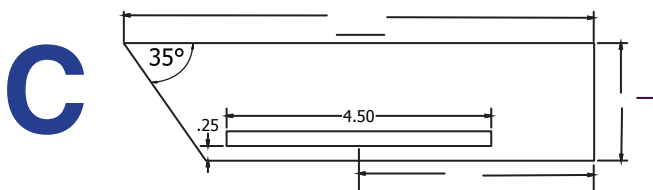
90° Angle



20° Angle



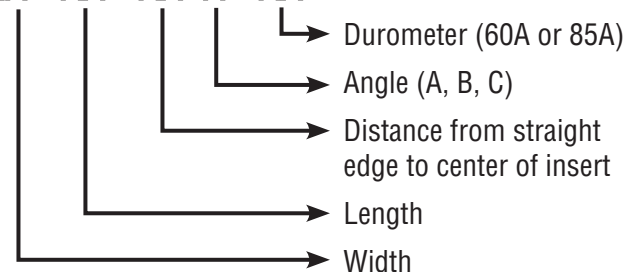
35° Angle



Please note:

Part number convention is as follows:

ULX - XX - XX X - XX



**6"**

Size	Length	Item Number	Weight
1" X 6"	48"	UL6-1048X-XX	12.4
1" X 6"	60"	UL6-1060X-XX	15.5
1" X 6"	72"	UL6-1072X-XX	18.6
1½" X 6"	48"	UL6-1548X-XX	18.6
1½" X 6"	60"	UL6-1560X-XX	23.25
1½" X 6"	72"	UL6-1572X-XX	27.9
2" X 6"	48"	UL6-2048X-XX	24.8
2" X 6"	60"	UL6-2060X-XX	31
2" X 6"	72"	UL6-2072X-XX	37.2

**8"**

Size	Length	Item Number	Weight
1" X 8"	48"	UL8-1048X-XX	16.8
1" X 8"	60"	UL8-1060X-XX	21
1" X 8"	72"	UL8-1072X-XX	25.4
1½" X 8"	48"	UL8-1548X-XX	25.4
1½" X 8"	60"	UL8-1560X-XX	31.5
1½" X 8"	72"	UL8-1572X-XX	37.8
2" X 8"	48"	UL8-2048X-XX	33.6
2" X 8"	60"	UL8-2060X-XX	42
2" X 8"	72"	UL8-2072X-XX	50.4

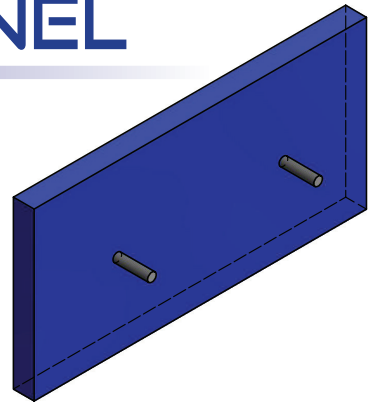
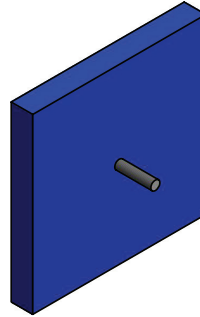
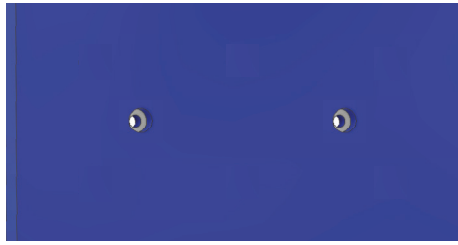
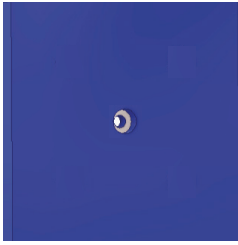
**10"**

Size	Length	Item Number	Weight
1" X 10"	48"	UL10-1048X-XX	20.4
1" X 10"	60"	UL10-1060X-XX	25.5
1" X 10"	72"	UL10-1072X-XX	30.6
1½" X 10"	48"	UL10-1548X-XX	30.6
1½" X 10"	60"	UL10-1560X-XX	38.25
1½" X 10"	72"	UL10-1572X-XX	45.9
2" X 10"	48"	UL10-2048X-XX	41.2
2" X 10"	60"	UL10-2060X-XX	51.5
2" X 10"	72"	UL10-2072X-XX	61.8

**12"**

Size	Length	Item Number	Weight
1" X 12"	48"	UL12-1048X-XX	26
1" X 12"	60"	UL12-1060X-XX	32
1" X 12"	72"	UL12-1072X-XX	35
1½" X 12"	48"	UL12-1548X-XX	40
1½" X 12"	60"	UL12-1560X-XX	47
1½" X 12"	72"	UL12-1572X-XX	56
2" X 12"	48"	UL12-2048X-XX	50
2" X 12"	60"	UL12-2060X-XX	62
2" X 12"	72"	UL12-2072X-XX	75

# EAGLE IMPACT LINER PANEL



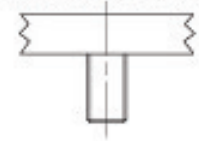
## THREADED STUD MOUNTING OPTION

1" THICKNESS		
Size	Item Number	Weight
12x12	EILP-10-1212-TS	13.5
12X18	EILP-10-1218-TS	16.75
12X24	EILP-10-1224-TS	24
18X18	EILP-10-1818-TS	28.50

1-1/2" THICKNESS		
Size	Item Number	Weight
12x12	EILP-15-1212-TS	14.75
12X18	EILP-15-1218-TS	21.50
12X24	EILP-15-1224-TS	30.50
18X18	EILP-15-1818-TS	35.75

2" THICKNESS		
Size	Item Number	Weight
12x12	EILP-20-1212-TS	18.00
12X18	EILP-20-1218-TS	26.50
12X24	EILP-20-1224-TS	37.00
18X18	EILP-20-1818-TS	43.00

Threaded Stud



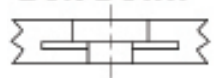
## BOLT DOWN MOUNTING OPTION

1" THICKNESS		
Size	Item Number	Weight
12x12	EILP-10-1212-BD	13.5
12X18	EILP-10-1218-BD	16.75
12X24	EILP-10-1224-BD	24
18X18	EILP-10-1818-BD	28.50

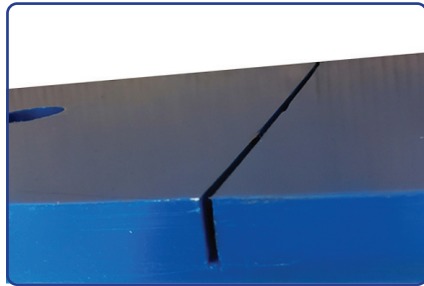
1-1/2" THICKNESS		
Size	Item Number	Weight
12x12	EILP-15-1212-BD	14.75
12X18	EILP-15-1218-BD	21.50
12X24	EILP-15-1224-BD	30.50
18X18	EILP-15-1818-BD	35.75

2" THICKNESS		
Size	Item Number	Weight
12x12	EILP-20-1212-BD	18.00
12X18	EILP-20-1218-BD	26.50
12X24	EILP-20-1224-BD	37.00
18X18	EILP-20-1818-BD	43.00

Bolt Down



# EAGLE MODULAR IMPACT PANELS



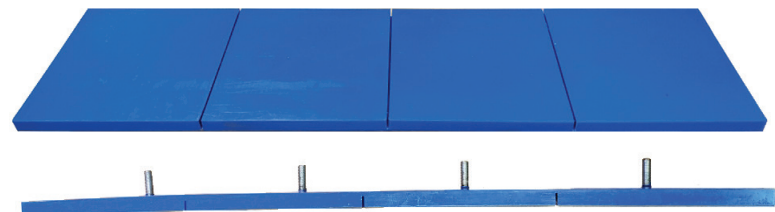
Trimgap™ on 12" centers make it easy to cut into 12 x 12 and 12 x 24. Also the Trimgap™ allows for more flexibility when installing on uneven surfaces.

## BOLT DOWN

Size	Thickness	Item Number	Weight
12x48	1"	EMIP-10-1248-BD	32

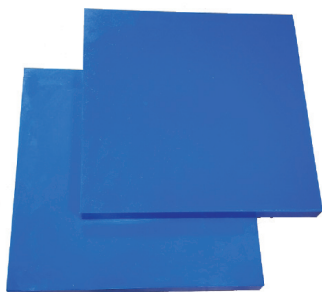
## THREADED STUDS

Size	Thickness	Item Number	Weight
12x48	1"	EMIP-10-1248-TS	35

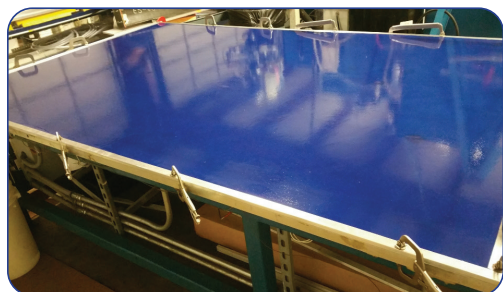


\*OTHER SIZES AVAILABLE UPON REQUEST

# URETHANE SHEET

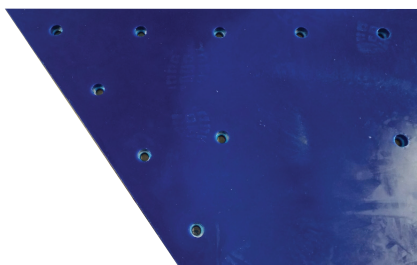


Urethane Sheet and Wear Liner material is manufactured from premium blends of urethane specifically designed for high abrasion resistance. We offer two standard durometers: 60A (soft) and 85A (hard). We offer solid urethane sheet in custom sizes up to 60x120.



We can mold urethane to steel backings upon request. Please give us the steel thickness when requesting a quote.

## CUSTOM SIZES AND SHAPES



We offer custom urethane molded sheet and liner products to your specification.

- Standard Durometers: 60A / 72A / 85A
- Standard Colors: Blue / Orange  
(we offer other colors upon request, with possible upcharge)
- With steel backings / washers / inserts

### 60A HARDNESS

	4'x4'	Weight	4'x8'	Weight	4'x10'	Weight
1/4"	ESM-250-4848B60	26	ESM-250-4896B60	52	ESM-250-48120B60	65
3/8"	ESM-375-4848B60	39	ESM-375-4896B60	78	ESM-375-48120B60	98
1/2"	ESM-500-4848B60	52	ESM-500-4896B60	104	ESM-500-48120B60	130
3/4"	ESM-750-4848B60	78	ESM-750-4896B60	156	ESM-750-48120B60	195
1"	ESM-100-4848B60	104	ESM-100-4896B60	208	ESM-100-48120B60	260

### 85A HARDNESS

	4'x4'	Weight	4'x8'	Weight	4'x10'	Weight
1/4"	ESM-250-4848B85	26	ESM-250-4896B85	52	ESM-250-48120B85	65
3/8"	ESM-375-4848B85	39	ESM-375-4896B85	78	ESM-375-48120B85	98
1/2"	ESM-500-4848B85	52	ESM-500-4896B85	104	ESM-500-48120B85	130
3/4"	ESM-750-4848B85	78	ESM-750-4896B85	156	ESM-750-48120B85	195
1"	ESM-100-4848B85	104	ESM-100-4896B85	208	ESM-100-48120B85	260

### 60A HARDNESS

	5'x5'	Weight	5'x8'	Weight	5'x10'	Weight
1/4"	ESM-250-6060B60	41	ESM-250-6096B60	65	ESM-250-60120B60	81
3/8"	ESM-375-6060B60	61	ESM-375-6096B60	98	ESM-375-60120B60	122
1/2"	ESM-500-6060B60	81	ESM-500-6096B60	130	ESM-500-60120B60	162
3/4"	ESM-750-6060B60	122	ESM-750-6096B60	195	ESM-750-60120B60	243
1"	ESM-100-6060B60	162	ESM-100-6096B60	260	ESM-100-60120B60	324

### 85A HARDNESS

	5'x5'	Weight	5'x8'	Weight	5'x10'	Weight
1/4"	ESM-250-6060B85	41	ESM-250-6096B85	65	ESM-250-60120B85	81
3/8"	ESM-375-6060B85	61	ESM-375-6096B85	98	ESM-375-60120B85	122
1/2"	ESM-500-6060B85	81	ESM-500-6096B85	130	ESM-500-60120B85	162
3/4"	ESM-750-6060B85	122	ESM-750-6096B85	195	ESM-750-60120B85	243
1"	ESM-100-6060B85	162	ESM-100-6096B85	260	ESM-100-60120B85	324



IT'S THE YEAR OF  
**INNOVATION**  
AT AMERICAN EAGLE  
MANUFACTURING

***EAGLE EDGE USA***

American Eagle Manufacturing LLC  
866 713 8985  
252 633 0603  
3280 US Hwy. 70 East  
New Bern, North Carolina 28560  
[AmericanEagleManufacturing.com](http://AmericanEagleManufacturing.com)

