

U-FLEX™ SECONDARY CLEANER



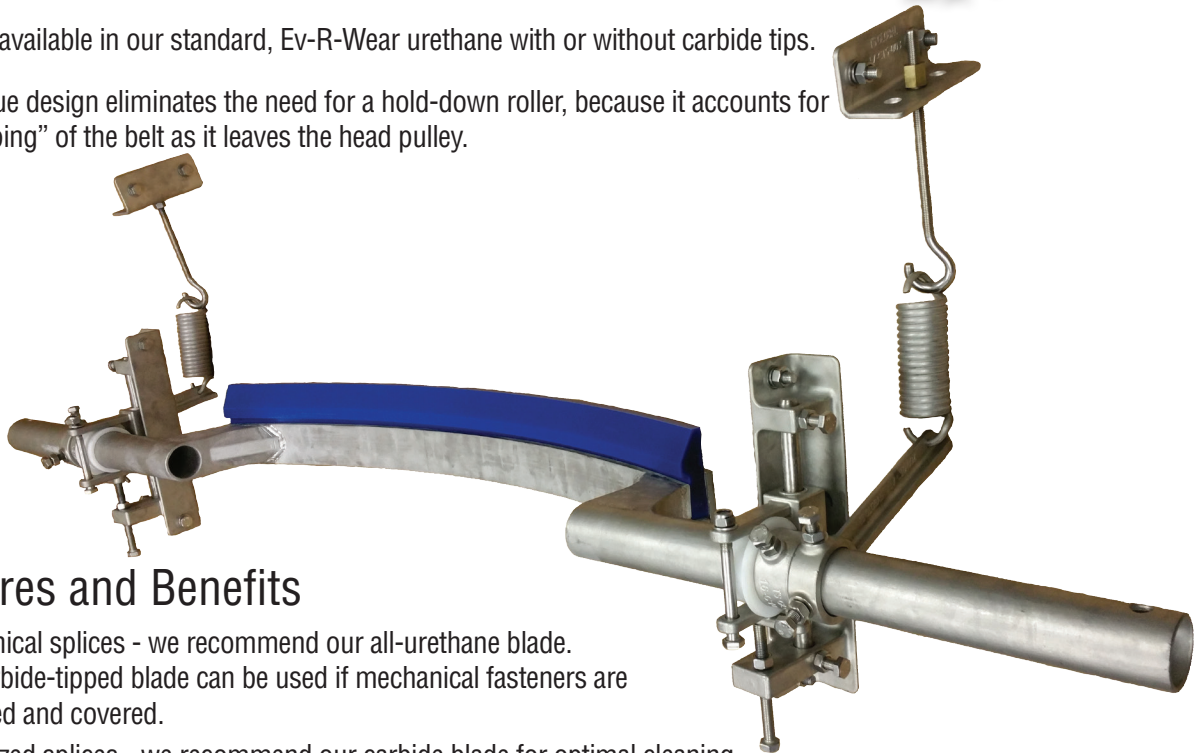
Flex Means Conform-ability

Introducing AEM's new U-Flex option for secondary cleaner placement!

The curved blade is tailor-made to conform to the surface of the belt, and with AEM's proven Ev-R-Wear urethane formula, even the stickiest of materials will not cling.

U-Flex is available in our standard, Ev-R-Wear urethane with or without carbide tips.

The unique design eliminates the need for a hold-down roller, because it accounts for the "cupping" of the belt as it leaves the head pulley.



Features and Benefits

- Mechanical splices - we recommend our all-urethane blade. Our carbide-tipped blade can be used if mechanical fasteners are recessed and covered.
- Vulcanized splices - we recommend our carbide blade for optimal cleaning.
- Easy blade replacement.

U-Flex™ Belt Cleaner with Carbide Blade

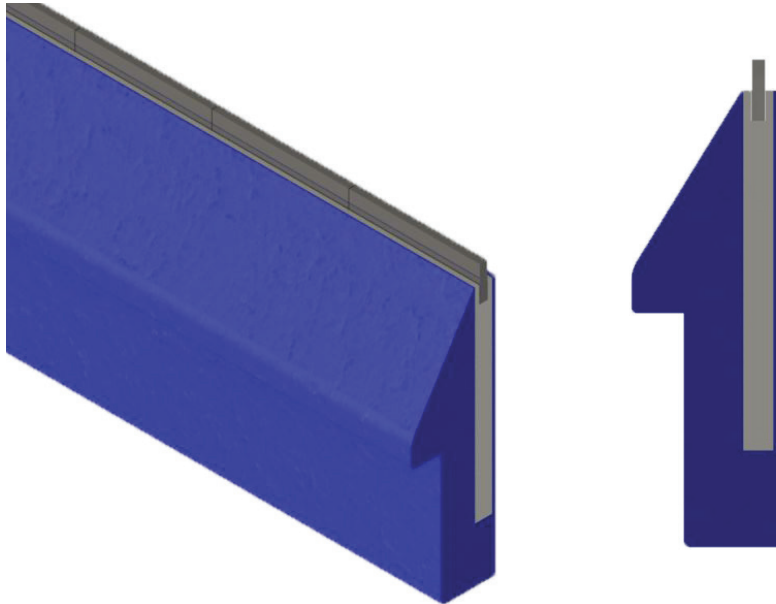
Belt Width	AEM Part Number	Weight
24"	EUFSC-M-GC-24	121
30"	EUFSC-M-GC-30	130
36"	EUFSC-M-GC-36	136
42"	EUFSC-M-GC-42	148
48"	EUFSC-M-GC-48	155
54"	EUFSC-M-GC-54	161
60"	EUFSC-M-GC-60	169
66"	EUFSC-M-GC-66	189
72"	EUFSC-M-GC-72	226
84"	EUFSC-M-GC-84	241

U-Flex™ Belt Cleaner with Urethane Blade

Belt Width	BETTER OPTION Ev-R-Wear™		Weight
	AEM Part Number	AEM Part Number	
24"	EUFSC-M-UR-24	EUFSC-W-UR-24	105
30"	EUFSC-M-UR-30	EUFSC-W-UR-30	113
36"	EUFSC-M-UR-36	EUFSC-W-UR-36	119
42"	EUFSC-M-UR-42	EUFSC-W-UR-42	125
48"	EUFSC-M-UR-48	EUFSC-W-UR-48	133
54"	EUFSC-M-UR-54	EUFSC-W-UR-54	140
60"	EUFSC-M-UR-60	EUFSC-W-UR-60	148
66"	EUFSC-M-UR-66	EUFSC-W-UR-66	162
72"	EUFSC-M-UR-72	EUFSC-W-UR-72	210
84"	EUFSC-M-UR-84	EUFSC-W-UR-84	235

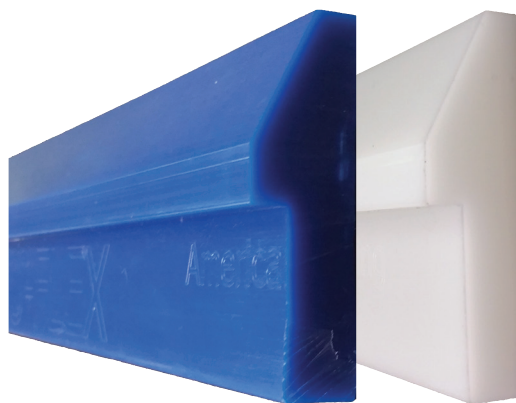
U-FLEX™ REPLACEMENT BLADES

U-Flex™ Carbide Replacement Blade Secondary Blades



Belt Width	AEM Part Number	Weight
18"	SCUF-M-GC-18	5.0
24"	SCUF-M-GC-24	6.7
30"	SCUF-M-GC-30	8.4
36"	SCUF-M-GC-36	10.1
42"	SCUF-M-GC-42	11.7
48"	SCUF-M-GC-48	13.5
54"	SCUF-M-GC-54	15.0
60"	SCUF-M-GC-60	16.8
66"	SCUF-M-GC-66	18.5
72"	SCUF-M-GC-72	20.2
78"	SCUF-M-GC-78	21.9
84"	SCUF-M-GC-84	23.5

U-Flex™ Urethane Replacement Blade Secondary Blades



Belt Width	<div style="display: inline-block; border: 1px solid black; padding: 2px;"> BETTER OPTION Ev-R-Wear™ </div> <div style="display: inline-block; border: 1px solid black; padding: 2px; margin-left: 10px;"> FOOD GRADE WHITE-FLEX™ </div>		Weight
	AEM Part Number	AEM Part Number	
18"	SCUF-M-UR-18	SCUF-W-UR-18	3.0
24"	SCUF-M-UR-24	SCUF-W-UR-24	4.0
30"	SCUF-M-UR-30	SCUF-W-UR-30	5.0
36"	SCUF-M-UR-36	SCUF-W-UR-36	6.0
42"	SCUF-M-UR-42	SCUF-W-UR-42	7.0
48"	SCUF-M-UR-48	SCUF-W-UR-48	8.0
54"	SCUF-M-UR-54	SCUF-W-UR-54	9.0
60"	SCUF-M-UR-60	SCUF-W-UR-60	10.0
66"	SCUF-M-UR-66	SCUF-W-UR-66	11.0
72"	SCUF-M-UR-72	SCUF-W-UR-72	12.0
78"	SCUF-M-UR-78	SCUF-W-UR-78	13.0
84"	SCUF-M-UR-84	SCUF-W-UR-84	14.0