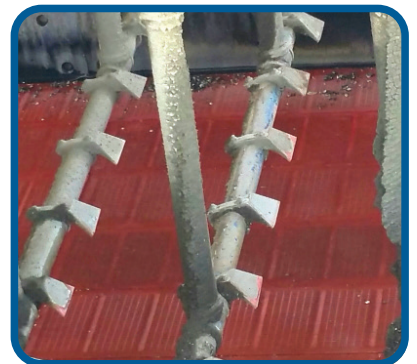
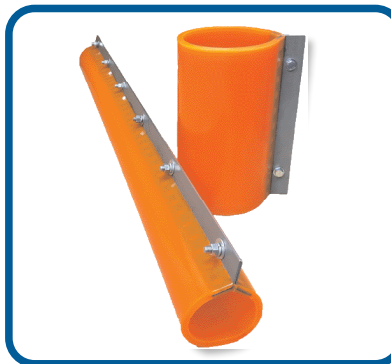
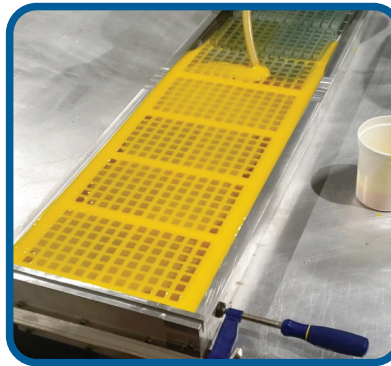


IT'S THE YEAR OF
INNOVATION
AT AMERICAN EAGLE
MANUFACTURING



SCREENING AND LINING ACCESSORIES



URETHANE SCREENS

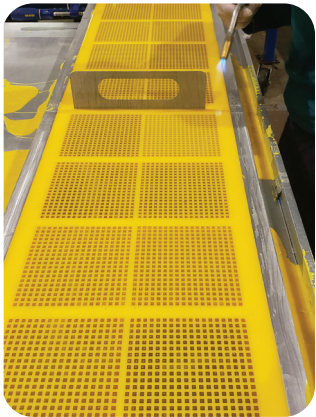
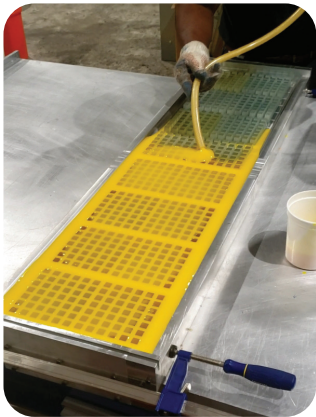
ELIMINATE YOUR BLINDING WITH THE GLIDE-X ADDITIVE

Through working with material suppliers and chemists over the years, AEM has helped to develop a variety of proprietary materials for all types of applications.

OUR NEWEST BREAKTHROUGH IS GLIDE-X

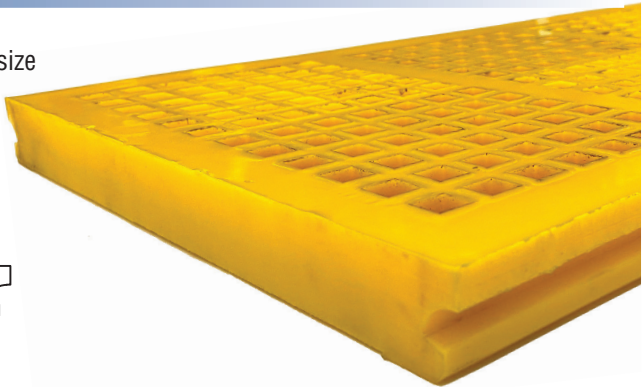
Using equipment specifically designed and engineered for this cutting-edge technology, Glide-X is homogeneously blended throughout the urethane itself, allowing the familiar slick surface of open-cast urethane to be always present, even after wear.

We offer screens in a variety of durometers and designs to best serve the needs of your specific application. Call us at 1-866-713-8985 and we can guide you through the selection process.

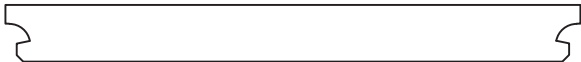


TEMA™ STYLE REPLACEMENT SCREENS

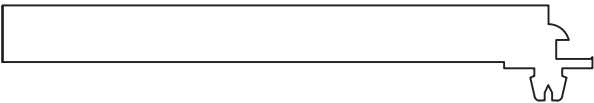
- 12x24 (300mm x 610mm) / 12x48 (300mm x 1219mm) overall screen size
- Thickness: 30mm / 40mm / 50mm / 60mm / 70mm
- 83A Glide-X material
- 70A Glide-X material skalping screens



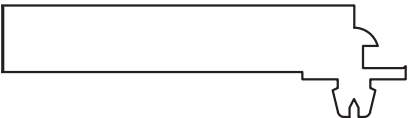
T-1 SERIES



T-2 SERIES

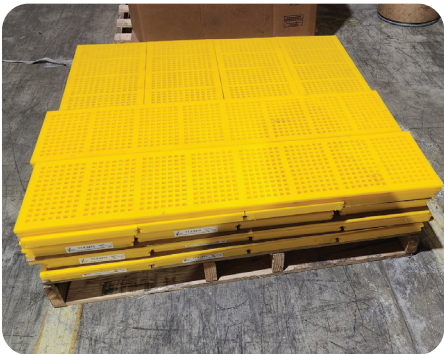


T-3 SERIES

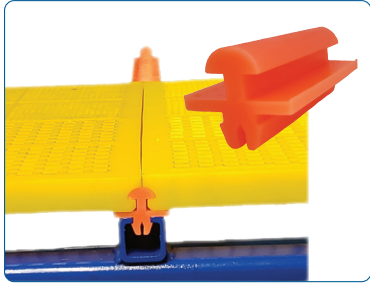


REQUEST A QUOTE. . .

Series Type	Size	Thickness	Opening Size	Durometer



LITTLE MAN



Used on the rail to allow screen panels to be locked into place and secured.

Item Number	Weight
TSSB48-01	1lb

SOLD IN BOXES OF 25

SCREEN WEDGES

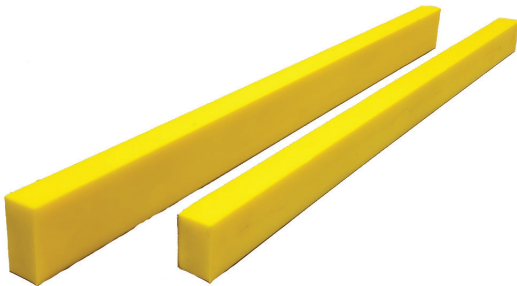


AEM's urethane wedge is designed to secure your side liners without the use of any type of fastener. For added strength, we've also molded around a steel plate for rigidity.

Item Number	Weight
WEDGE-01	1lb

SOLD IN BOXES OF 25

SIDE LINERS



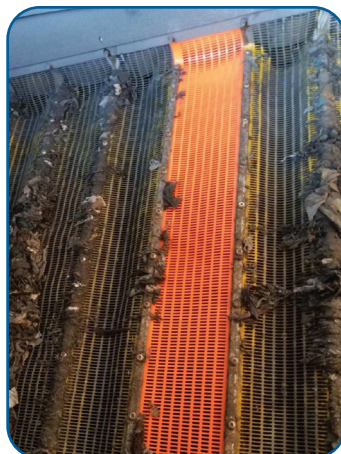
Side liners are molded using 85A urethane around a steel structural insert, keeping the liner straight and rigid to maintain consistent placement in spite of vibration.

Size	Item Number	Weight
2x3x48	ESSL020348	16lbs
2x4x48	ESSL020448	20lbs
2x6x48	ESSL020648	32lbs

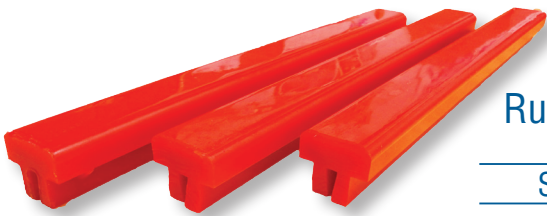
FLIP FLOW SCREENS

- Metal recycling industry
- Aggregate industry
- Dewatering/waste treatment industry

Our Glide-X formula has been significantly outlasting most OEM screens.



URETHANE "T" BARS



Replacement For Rubber Bucker-Up Strips

Shaker Screen Protection

Also referred to as buffer strip, bucker-up strip, buffer channel and crown bar channel. Our high performance urethane outlasts standard rubber.

- ✦ Abrasion resistant
- ✦ Resists cuts and tears
- ✦ Impact resistant
- ✦ Positive gripping action



Rail Size	Wear Thickness	Length	Item Number	Color	Weight
1/4"	5/8	48"	T1448	Red	3
1/4"	5/8	60"	T1460	Red	3
3/8"	5/8	48"	T3848	Orange	3
3/8"	5/8	60"	T3860	Orange	4
1/2"	5/8	48"	T1248	Blue	4
1/2"	5/8	60"	T1260	Blue	4

BENEFITS

- ✦ Longer screen life
- ✦ Reduce noise
- ✦ Less maintenance
- ✦ Easy installation

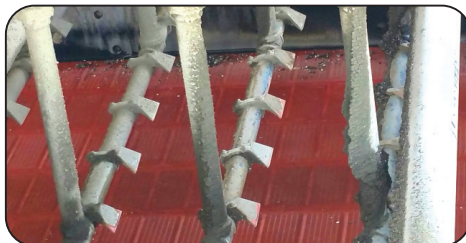
SOLD IN BOXES OF 25

EAGLE SPRAY DEFLECTOR



High performance Eagle Spray Deflectors wash your material and clean screens more efficiently than any other design.

This design allows for a larger diameter spray opening that will greatly decrease spray bar plugging. At the same time, the deflector spreads water over a larger area for improved washing, resulting in less maintenance and downtime.



Spray deflectors come with all mounting hardware.

Pipe Size	Item Number	Weight
1 1/4"	ESD-1.25	.5
1 1/2"	ESD-1.5	.5
2"	ESD-2.0	.5
3"	ESD-3.0	1

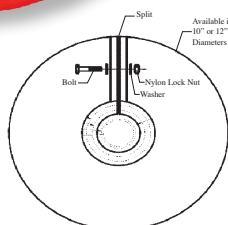
BENEFITS & FEATURES

- ✦ Efficient material washing
- ✦ Reduce spray bar plugging
- ✦ Easy installation
- ✦ Long lasting
- ✦ Cost effective

EAGLE SPRAY BAR SHIELD



The Eagle Spray Bar Shield easily attaches to your current spray bar to deflect spray and divert it. Designed for screening and crushing applications.



Eagle Spray Bar Shields are molded with 85A durometer high performance urethane. Fastening hardware included.

O.D.	Nominal Size	Item Number	Weight
10"	1-1/4" (1.660 Dia)	ESBS-166-10	3 1/2
10"	1-1/2" (1.875 Dia)	ESBS-187-10	3 1/2
10"	2" (2.375 Dia)	ESBS-237-10	3 1/4
10"	2-1/2" (2.875 Dia)	ESBS-287-10	3 1/4
10"	3" (3.5 Dia)	ESBS-350-10	3
12"	1-1/4" (1.660 Dia)	ESBS-166-12	4
12"	1-1/2" (1.875 Dia)	ESBS-187-12	3 3/4
12"	2" (2.375 Dia)	ESBS-237-12	3 1/2
12"	2-1/2" (2.875 Dia)	ESBS-287-12	3 1/2
12"	3" (3.5 Dia)	ESBS-350-12	3 1/4

DEISTER® REPLACEMENT ACCESSORIES

SPRAY BAR SHIELD



O.D.	Nominal Size	Item Number	Weight
8	2" Pipe	ESBS2-237-8	1
12	2" Pipe	ESBS2-237-12	2

PIPE COVER



Nominal Pipe Size	Length "A"	ID "B"	Item Number	Weight
2"	48"	2-1/2"	ETC-01	5

*NOTE: 2-3/8 I.D. x 3-3/8 O.D. Half Round

TENSION RAILS



Description	Length	Holes	Item Number	Weight
Steel w/Urethane	48	3	ETR-01	21
Steel	48	3	ETR-02	30

'Diester' is the registered trademark of
Deister Concentrator, LLC
of 4202 Piper Drive, Fort Wayne, IN'

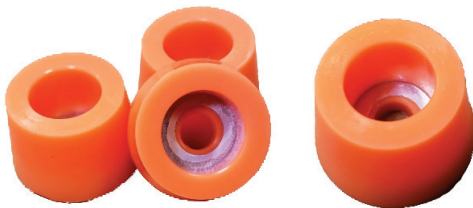
TENSION RAILS

ALL STEEL AND URETHANE COVERED TENSION RAILS

- ✦ Hewitt-Robbins
- ✦ Cedar Rapids
- ✦ Tesmith
- ✦ Pioneer
- ✦ JCI
- ✦ Allis-Chalmers
- ✦ Simplicity
- ✦ El-Jay
- ✦ Deister



SCREEN BOLT PROTECTORS



BENEFITS & FEATURES

- ✦ Protects bolts from corrosion and oxidation
- ✦ Helps avoid bolt fatigue by insulating against vibration

Bolt Size	Item Number	Weight
5/8"	SBP-01	8

Sold in Boxes of 24 (8lbs per box)

CLASSIFIER FLIGHT SHOES



Please use our worksheet when requesting a quote.

American Eagle Manufacturing has forty years of experience in molding Urethane replacement classifier shoes for all major OEM equipment. AEM shoes are manufactured with high performance urethane. Engineered to offer high resistance to abrasion with low friction additives which will extend the life of our shoes in the most challenging applications.

OEM Replacement Shoes available

BENEFITS & FEATURES

- ✦ Lighter than steel alternative
- ✦ Non-corrosive
- ✦ Less motor fatigue due to lighter weight
- ✦ Less power consumption
- ✦ Interchangeable between left and right screws

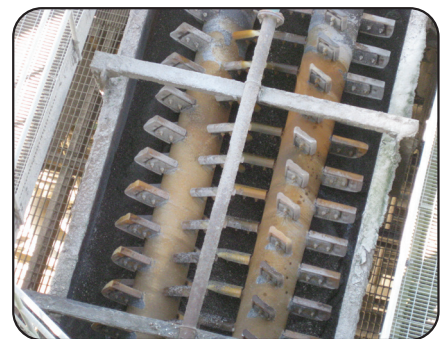
LOG WASHER PADDLE TIPS



American Eagle Manufacturing log washer paddle tips are manufactured with high performance urethane. Engineered to offer high resistance to abrasion with low friction additives to extend the life of our paddle tips in the most challenging applications.

BENEFITS & FEATURES

- ✦ Lighter than steel alternative
- ✦ Non-corrosive
- ✦ Less motor fatigue due to lighter weight
- ✦ Less power consumption
- ✦ Interchangeable between left and right screws



URETHANE MAGNETIC LINER

Without careful handling, there has historically been a risk of cracking or breaking magnets during installation.

Without careful placement, the magnets, standing proud from the surface of the urethane or rubber liner, could easily slide out of position.

Without careful maintenance, magnets will oxidize, reducing the bond between magnet and urethane, and eventually compromising the pull between magnet and wall.

Our newly redesigned magnetic liner panels protect the magnet by encapsulating it while still providing superior magnetic pull to hold the liner in place, even under aggressive conditions.

No drilling, no measuring, no welding. No more chips or breaking, no more oxidation, no more losing magnets.

“INNOVATIVE SOLUTIONS FOR EVERYDAY PROBLEMS.”

12" X 12"

EAGLE MAGNETIC LINER

Size	Item Number	Weight
1x12x12	EMLP-10-1212	7
1-1/2x12x12	EMLP-15-1212	10
2x12x12	EMLP-20-1212	13

12" X 24"

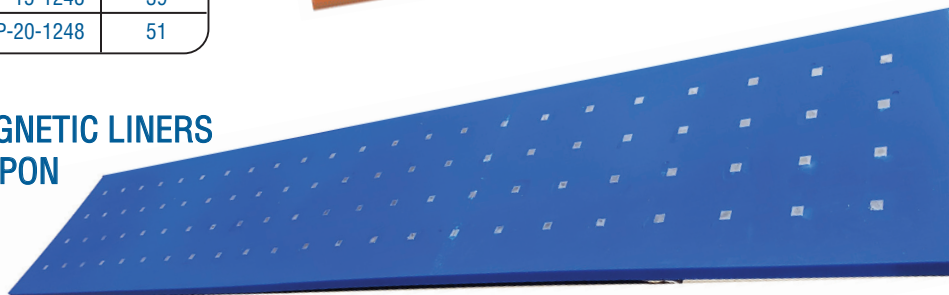
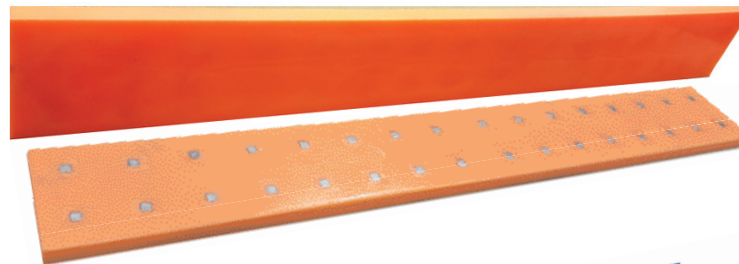
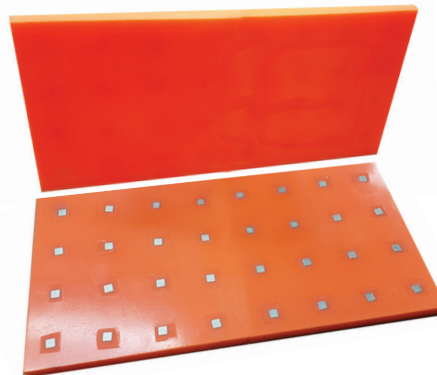
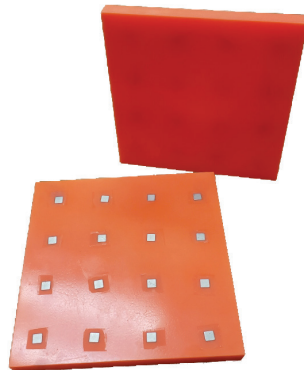
EAGLE MAGNETIC LINER

Size	Item Number	Weight
1x12x24	EMLP-10-1224	13
1-1/2x12x24	EMLP-15-1224	19
2x12x24	EMLP-20-1224	25

48" EAGLE MAGNETIC LINER

Size	Item Number	Weight
1x6x48	EMLP-10-0648	13
1-1/2x6x48	EMLP-15-0648	19
2x6x48	EMLP-20-0648	25
1x8x48	EMLP-10-0848	17
1-1/2x8x48	EMLP-15-0848	25
2x8x48	EMLP-20-0848	33
1x12x48	EMLP-10-1248	28
1-1/2x12x48	EMLP-15-1248	39
2x12x48	EMLP-20-1248	51

CUSTOM MAGNETIC LINERS AVAILABLE UPON REQUEST



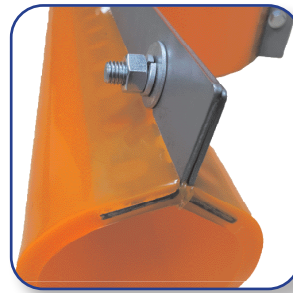
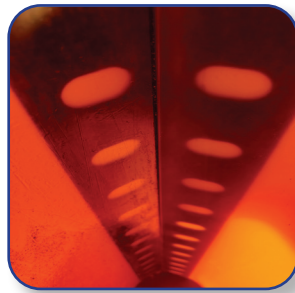
**Patent
Pending**

*16 magnets per square foot
equals 175lbs of pull per
square foot

EAGLE SCREEN DECK PIPE COVERS

PROTECT YOUR PIPE!

American Eagle Manufacturing's pipe cover innovation is the ultimate in protection, design and manufacturing versatility to meet your requirements. With our new patent pending inserts that allow for easy installation, we have the most secure pipe cover in the industry. Being the industry leader in proprietary blended urethanes for abrasion and impact, we give you the only pipe cover you will ever want to buy with more flexible size options then ever before.



Patent Pending

IMPORTANT!!!

Pipe sizes are nominal. We manufacture these Pipe covers with an I.D. -0 and up to +.500. Always confirm your pipe finished O.D. Before ordering.

48"

PIPE O.D.	ITEM NUMBER	WT.
4"	ESPC-400-48	20
5"	ESPC-500-48	24
6"	ESPC-600-48	27
8"	ESPC-800-48	34
10"	ESPC-1000-48	41
12"	ESPC-1200-48	44
14"	ESPC-1400-48	54
16"	ESPC-1600-48	61
18"	ESPC-1800-48	65

60"

PIPE O.D.	ITEM NUMBER	WT.
4"	ESPC-400-60	25
5"	ESPC-500-60	30
6"	ESPC-600-60	34
8"	ESPC-800-60	41
10"	ESPC-1000-60	49
12"	ESPC-1200-60	57
14"	ESPC-1400-60	66
16"	ESPC-1600-60	75
18"	ESPC-1800-60	81

72"

PIPE O.D.	ITEM NUMBER	WT.
4"	ESPC-400-72	29
5"	ESPC-500-72	35
6"	ESPC-600-72	39
8"	ESPC-800-72	50
10"	ESPC-1000-72	60
12"	ESPC-1200-72	69
14"	ESPC-1400-72	80
16"	ESPC-1600-72	90
18"	ESPC-1800-72	98

American Eagle Manufacturing's new tooling design and advanced process allows for an almost limitless size option for pipe covers.

Max O.D. Pipe 18" and Max Length 96"

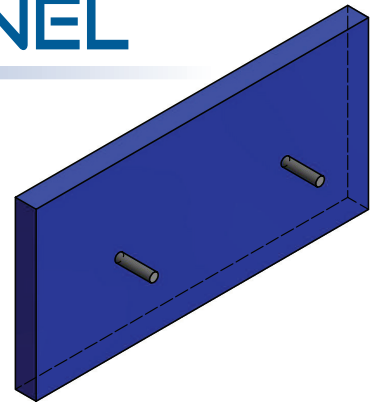
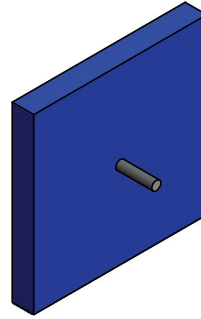
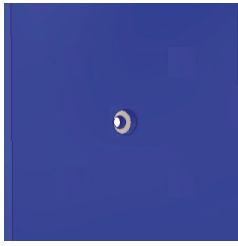
Custom sizes available upon request

PROTECT YOUR INVESTMENT

At the very center of your process is the screen deck. Capital investment, maintenance time and labor go into it... so why not protect it? Specific to each deck configuration, American Eagle has devised a way to provide just the protection it needs. The pictures speak for themselves.



EAGLE IMPACT LINER PANEL



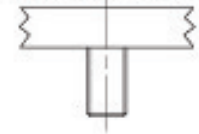
THREADED STUD MOUNTING OPTION

1" THICKNESS		
Size	Item Number	Weight
12x12	EILP-10-1212-TS	13.5
12X18	EILP-10-1218-TS	16.75
12X24	EILP-10-1224-TS	24
18X18	EILP-10-1818-TS	28.50

1-1/2" THICKNESS		
Size	Item Number	Weight
12x12	EILP-15-1212-TS	14.75
12X18	EILP-15-1218-TS	21.50
12X24	EILP-15-1224-TS	30.50
18X18	EILP-15-1818-TS	35.75

2" THICKNESS		
Size	Item Number	Weight
12x12	EILP-20-1212-TS	18.00
12X18	EILP-20-1218-TS	26.50
12X24	EILP-20-1224-TS	37.00
18X18	EILP-20-1818-TS	43.00

Threaded Stud



BOLT DOWN MOUNTING OPTION

1" THICKNESS		
Size	Item Number	Weight
12x12	EILP-10-1212-BD	13.5
12X18	EILP-10-1218-BD	16.75
12X24	EILP-10-1224-BD	24
18X18	EILP-10-1818-BD	28.50

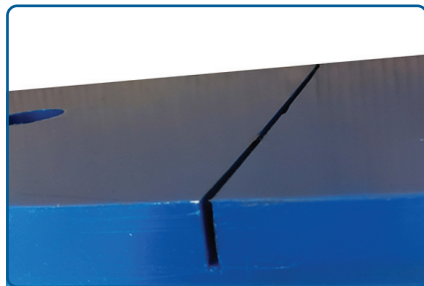
1-1/2" THICKNESS		
Size	Item Number	Weight
12x12	EILP-15-1212-BD	14.75
12X18	EILP-15-1218-BD	21.50
12X24	EILP-15-1224-BD	30.50
18X18	EILP-15-1818-BD	35.75

2" THICKNESS		
Size	Item Number	Weight
12x12	EILP-20-1212-BD	18.00
12X18	EILP-20-1218-BD	26.50
12X24	EILP-20-1224-BD	37.00
18X18	EILP-20-1818-BD	43.00

Bolt Down



EAGLE MODULAR IMPACT PANELS



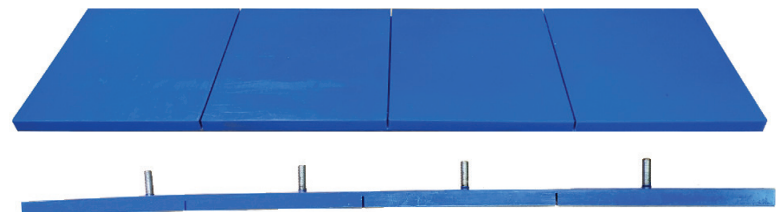
Trimgap™ on 12" centers make it easy to cut into 12 x 12 and 12 x 24. The Trimgap™ also allows for more flexibility when installing on uneven surfaces.

BOLT DOWN

Size	Thickness	Item Number	Weight
12x48	1"	EMIP-10-1248-BD	32

THREADED STUDS

Size	Thickness	Item Number	Weight
12x48	1"	EMIP-10-1248-TS	35

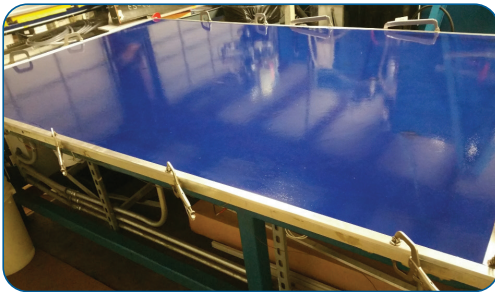


*OTHER SIZES AVAILABLE UPON REQUEST

URETHANE SHEET

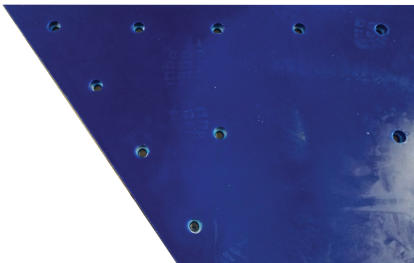


Urethane Sheet and Wear Liner material is manufactured from premium blends of urethane specifically designed for high abrasion resistance. We offer two standard durometers: 60A (soft) and 85A (hard). We offer solid urethane sheet in custom sizes up to 60x120.



We can mold urethane to steel backings upon request. Please give us the steel thickness when requesting a quote.

CUSTOM SIZES AND SHAPES



We offer custom urethane molded sheet and liner products to your specification.

- Standard Durometers: 60A / 72A / 85A
- Standard Colors: Blue / Orange
(we offer other colors upon request, with possible upcharge)
- With steel backings / washers / inserts

60A HARDNESS

	4'x4'	Weight	4'x8'	Weight	4'x10'	Weight
1/4"	ESM-250-4848B60	26	ESM-250-4896B60	52	ESM-250-48120B60	65
3/8"	ESM-375-4848B60	39	ESM-375-4896B60	78	ESM-375-48120B60	98
1/2"	ESM-500-4848B60	52	ESM-500-4896B60	104	ESM-500-48120B60	130
3/4"	ESM-750-4848B60	78	ESM-750-4896B60	156	ESM-750-48120B60	195
1"	ESM-100-4848B60	104	ESM-100-4896B60	208	ESM-100-48120B60	260

85A HARDNESS

	4'x4'	Weight	4'x8'	Weight	4'x10'	Weight
1/4"	ESM-250-4848B85	26	ESM-250-4896B85	52	ESM-250-48120B85	65
3/8"	ESM-375-4848B85	39	ESM-375-4896B85	78	ESM-375-48120B85	98
1/2"	ESM-500-4848B85	52	ESM-500-4896B85	104	ESM-500-48120B85	130
3/4"	ESM-750-4848B85	78	ESM-750-4896B85	156	ESM-750-48120B85	195
1"	ESM-100-4848B85	104	ESM-100-4896B85	208	ESM-100-48120B85	260

60A HARDNESS

	5'x5'	Weight	5'x8'	Weight	5'x10'	Weight
1/4"	ESM-250-6060B60	41	ESM-250-6096B60	65	ESM-250-60120B60	81
3/8"	ESM-375-6060B60	61	ESM-375-6096B60	98	ESM-375-60120B60	122
1/2"	ESM-500-6060B60	81	ESM-500-6096B60	130	ESM-500-60120B60	162
3/4"	ESM-750-6060B60	122	ESM-750-6096B60	195	ESM-750-60120B60	243
1"	ESM-100-6060B60	162	ESM-100-6096B60	260	ESM-100-60120B60	324

85A HARDNESS

	5'x5'	Weight	5'x8'	Weight	5'x10'	Weight
1/4"	ESM-250-6060B85	41	ESM-250-6096B85	65	ESM-250-60120B85	81
3/8"	ESM-375-6060B85	61	ESM-375-6096B85	98	ESM-375-60120B85	122
1/2"	ESM-500-6060B85	81	ESM-500-6096B85	130	ESM-500-60120B85	162
3/4"	ESM-750-6060B85	122	ESM-750-6096B85	195	ESM-750-60120B85	243
1"	ESM-100-6060B85	162	ESM-100-6096B85	260	ESM-100-60120B85	324

IT'S THE YEAR OF
INNOVATION
AT AMERICAN EAGLE
MANUFACTURING

EAGLE EDGE USA

American Eagle Manufacturing LLC
866 713 8985
252 633 0603
3280 US Hwy. 70 East
New Bern, North Carolina 28560
AmericanEagleManufacturing.com

