

E1SD MINE DUTY

PRIMARY BELT CLEANER



The E1SD Primary Cleaner Series was created as an ideal option for affordable, easy-to-maintain carryback elimination.

BLADE HEIGHT 6-5/8"

Ev-R-Wear™

Proprietary urethane blend to increase abrasion-resistance and lubricity.

Available in -2 & -8 widths as standard others available upon request.

Sturdy aluminum extrusion lends itself to simple blade replacement.



2-3/8" OD
Mounting Pipe

Powder-coated as standard or available in stainless steel

EAGLE COMPRESSION SYSTEM

- Compact
- Stainless Assembly to Extend Life
- Self-Adjusting
- Features propeller nut to simplify tensioning in the field

Gap Gage Installation Tool



Dual Tensioners required on belt widths over 48"

FEATURES & BENEFITS

- Urethane blend used for **Ev-R-Wear™** blades received test results of ZERO in both flame and afterglow times, earning its MSHA approval for mine-use.
- Works with all splice types without damage to the belt.
- Fits most conveyor systems because of its availability for belt widths ranging 24" to 72"
- No tools required for blade replacement
- Tensioning system is constructed of stainless steel and urethane - most dependable, long-lasting materials available
- Gap gage included with every cleaner for easy install
 - Ensures proper gap between mounting pipe & belt
 - Ensures consistency of gap for entire length of mounting pipe to guarantee proper engagement

www.americaneaglemanufacturing.com

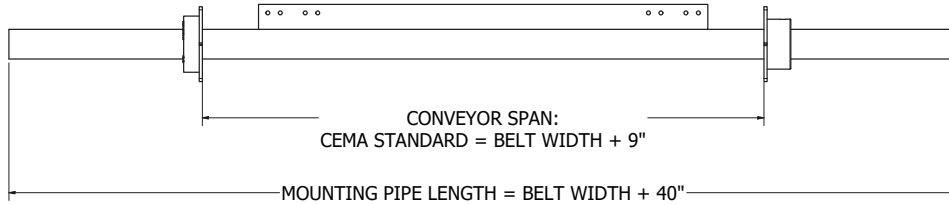
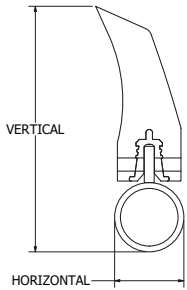
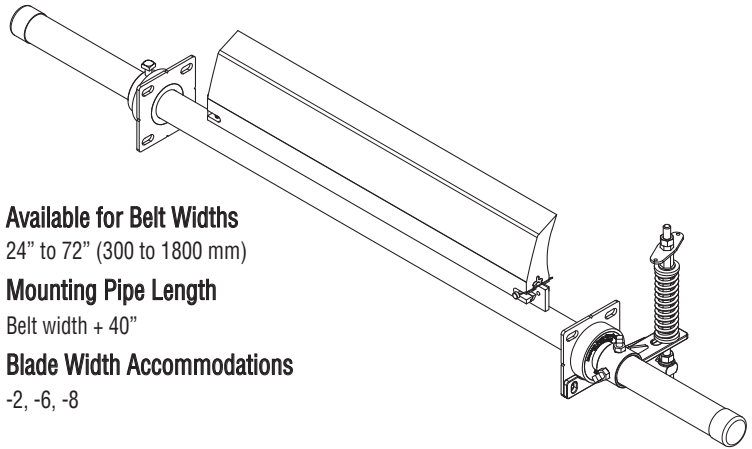
866-713-8985

E1SD MINE DUTY

Primary Belt Cleaner

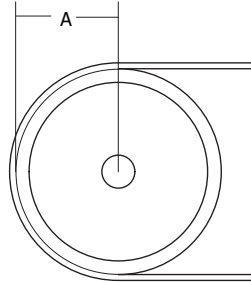
Specifications and Guidelines

- **Maximum Belt Speed**
1200 FPM (5 M/sec)
- **Temperature Rating**
-30°F to 217°F (-35°C to 100°C)
- **Minimum Pulley Diameter**
24" (600 mm)
- **Tensioner Type**
Eagle Compression System
- **Blade Material**
Ev-R-Wear™
85 Durometer Polyurethane
- **Blade Height**
6-5/8" (168 mm)
- **Horizontal Clearance Requirement**
4" (100 mm)
- **Vertical Clearance Requirement**
9" (229 mm)
- **Available for Belt Widths**
24" to 72" (300 to 1800 mm)
- **Mounting Pipe Length**
Belt width + 40"
- **Blade Width Accommodations**
-2, -6, -8



Determining Mounting Pipe Arc

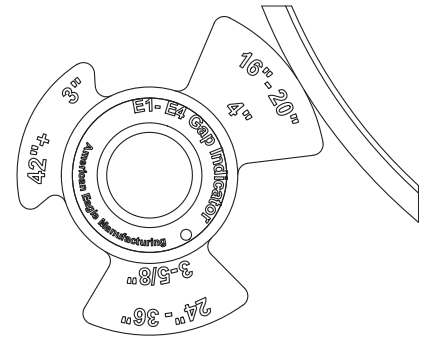
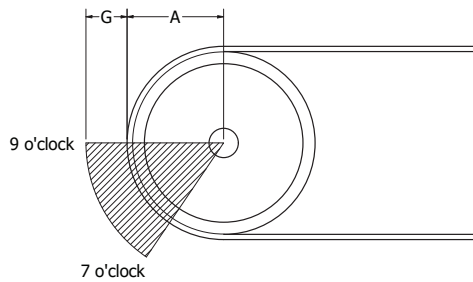
$A \times 2 =$



Gap Dimension Chart	
PULLEY DIAMETER	GAP
16" - 20"	4"
24" - 36"	3-5/8"
42" +	3"
TOLERANCES + OR - 1/4"	

Your Gap Dimension

$G + A =$ This is your arc dimension on chutewall for mounting bracket



Ordering Information

Belt Width	-2 Blade Width	Part Number
24"	22"	E1SDCSM24
30"	28"	E1SDCSM30
36"	34"	E1SDCSM36
42"	40"	E1SDCSM42
48"	46"	E1SDCDM48
54"	52"	E1SDCDM54
60"	58"	E1SDCDM60
72"	70"	E1SDCDM72

Replacement Blade
E1M22
E1M28
E1M34
E1M40
E1M46
E1M52
E1M58
E1M70

Belt Width	-8 Blade Width	Part Number
24"	16"	E1SDCSM24-8
30"	22"	E1SDCSM30-8
36"	28"	E1SDCSM36-8
42"	34"	E1SDCSM42-8
48"	40"	E1SDCDM48-8
54"	46"	E1SDCDM54-8
60"	52"	E1SDCDM60-8
72"	64"	E1SDCDM72-8

Replacement Blade
E1M16
E1M22
E1M28
E1M34
E1M40
E1M46
E1M52
E1M64



www.americaneaglemanufacturing.com

866-713-8985 fax (252) 633-5487

