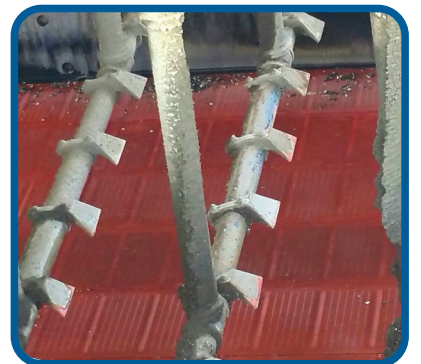
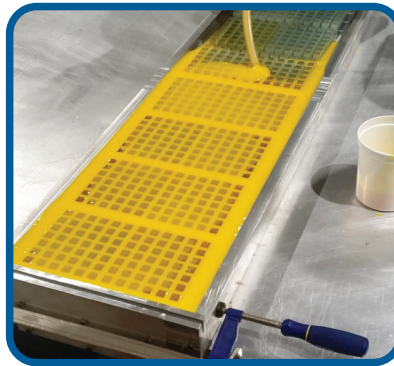


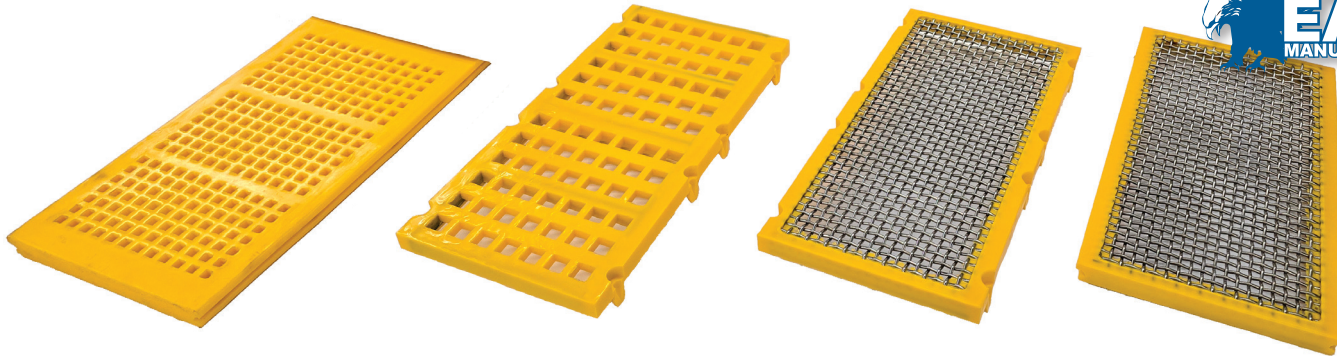
IT'S A NEW ERA OF
INNOVATION
AT AMERICAN EAGLE
MANUFACTURING



SCREENING AND LINING ACCESSORIES



EAGLE SCREENS



**KNOCK DOWN
STYLE
URETHANE
SCREEN PANEL**
12IN X 24IN
12IN X 48IN
CENTER PANEL

**PIN & LEG
STYLE
URETHANE
SCREEN PANEL**
12IN X 24IN
CENTER PANEL

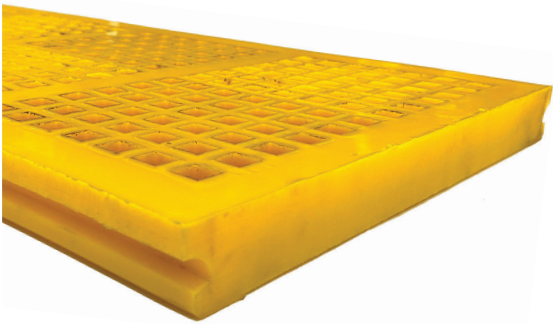
**PIN & LEG
STYLE
HYBRID SCREEN
PANEL**
12IN X 24IN
CENTER PANEL

**KNOCK DOWN
STYLE
HYBRID SCREEN
PANEL**
12IN X 24IN
CENTER PANEL

MSHA APPROVAL DATA

Date: September 9, 2021		PAR: 116810
Company: American Eagle Manufacturing, LLC		
Product: BlueFlex, AgFlex, SnapFlex, Eagle Armor Sheet material, AEM replacement blades, DeltaFlex, Adjustable urethane liner, urethane screens		
Usage: Belt Skirt, Chute liner, belt wiper		
Sample/Style: 58A: ¼ inch, one inch; 85A: ¼ inch, one inch		Color: Blue
<i>Procedure:</i> After conditioning, samples exposed to 60 seconds of ignition by a Bunsen burner flame in still air, followed by monitoring for pass/fail criteria under 300 feet/min airflow. For detailed procedure, please reference 30 CFR 18.65 or Approval and Certification Center document ASTP 5007.		
<i>Flame:</i> 3 inches, blue with inner cone		
<i>Air velocity:</i> 300 feet/min. (tolerance: +/- 10%)		
<i>Time to reach velocities:</i> Averages: 8.2s 8.2s 8.2s 8.2s (4 sample sets) (Tolerance +/- 1s)		
<i>Test Results:</i>		
Flame Time (s):	Afterglow (s) (Includes flame time):	
0	0	
0	0	
0	0	
0	0	
Average: 0	0	
<i>Criteria:</i> 60 s maximum	180 s maximum	
<i>Pass/Fail:</i> Pass		
Melts.Fallen material burns for [Range: 13-17 s], [Range: 13-19 s], [Range: 6-24 s], [Range: 5-25 s]		
Based on Data Sheet 2, PAR: 116810		30 CFR 18.65, ASTM D378-Section 15
ASAP 5001, ASTP 5007,		Documentation available upon request

KNOCK DOWN STYLE SCREENS



30MM

OPENING SIZE	MM	PANEL THICKNESS
3/32"	2.3	1.18/30MM
7/64"	2.6	1.18/30MM
1/8"	3.1	1.18/30MM
5/32"	4.0	1.18/30MM
3/16"	4.7	1.18/30MM
7/32"	5.6	1.18/30MM
1/4"	6.3	1.18/30MM
9/32"	7.0	1.18/30MM
5/16"	8.1	1.18/30MM
11/32"	8.6	1.18/30MM
3/8"	9.5	1.18/30MM
13/32"	10.2	1.18/30MM
7/16"	11.0	1.18/30MM
1/2"	12.7	1.18/30MM
19/32"	15.0	1.18/30MM
5/8"	15.8	1.18/30MM
3/4"	19.0	1.18/30MM
7/8"	22.2	1.18/30MM
1"	25.4	1.18/30MM

PANEL SIZE	PART NUMBER
12X24	T1-2.3213
12X24	T1-2.6213
12X24	T1-3.1213
12X24	T1-4.0213
12X24	T1-4.7213
12X24	T1-5.6213
12X24	T1-6.3213
12X24	T1-7.0213
12X24	T1-8.1213
12X24	T1-8.6213
12X24	T1-9.5213
12X24	T1-10.2213
12X24	T1-11.0213
12X24	T1-12.7213
12X24	T1-15.0213
12X24	T1-15.8213
12X24	T1-19.0213
12X24	T1-22.2213
12X24	T1-25.4213

PANEL SIZE	PART NUMBER
12X48	T1-2.3413
12X48	T1-2.6413
12X48	T1-3.1413
12X48	T1-4.0413
12X48	T1-4.7413
12X48	T1-5.6413
12X48	T1-6.3413
12X48	T1-7.0413
12X48	T1-8.1413
12X48	T1-8.6413
12X48	T1-9.5413
12X48	T1-10.2413
12X48	T1-11.0413
12X48	T1-12.7413
12X48	T1-15.0413
12X48	T1-15.8413
12X48	T1-19.0413
12X48	T1-22.2413
12X48	T1-25.4413

40MM

OPENING SIZE	MM	PANEL THICKNESS
3/8"	9.5	1.57/40MM
13/32"	10.2	1.57/40MM
7/16"	11.0	1.57/40MM
1/2"	12.7	1.57/40MM
19/32"	15.0	1.57/40MM
5/8"	15.8	1.57/40MM
3/4"	19.0	1.57/40MM
7/8"	22.2	1.57/40MM
1"	25.4	1.57/40MM
1-1/8"	28.5	1.57/40MM
1-1/2"	38.1	1.57/40MM
2"	50.8	1.57/40MM

PANEL SIZE	PART NUMBER
12X24	T1-9.5214
12X24	T1-10.2214
12X24	T1-11.0214
12X24	T1-12.7214
12X24	T1-15.0214
12X24	T1-15.8214
12X24	T1-19.0214
12X24	T1-22.2214
12X24	T1-25.4214
12X24	T1-28.5214
12X24	T1-38.1214
12X24	T1-50.8214

PANEL SIZE	PART NUMBER
12X48	T1-9.5414
12X48	T1-10.2414
12X48	T1-11.0414
12X48	T1-12.7414
12X48	T1-15.0414
12X48	T1-15.8414
12X48	T1-19.0414
12X48	T1-22.2414
12X48	T1-25.4414
12X48	T1-28.5414
12X48	T1-38.1414
12X48	T1-50.8414

Please Note: 0.1mm = 0.004 inches
Aperture tolerances are +/- 0.2mm or +/- 0.008"

EAGLE HYBRID SCREENS



30MM

**HIGH CARBON
STEEL WIRE**

**KNOCK DOWN
STYLE
HYBRID SCREEN
PANEL**

**12IN X 24IN
CENTER PANEL**

12" is for reference only.
Actual width is 11.81/300mm

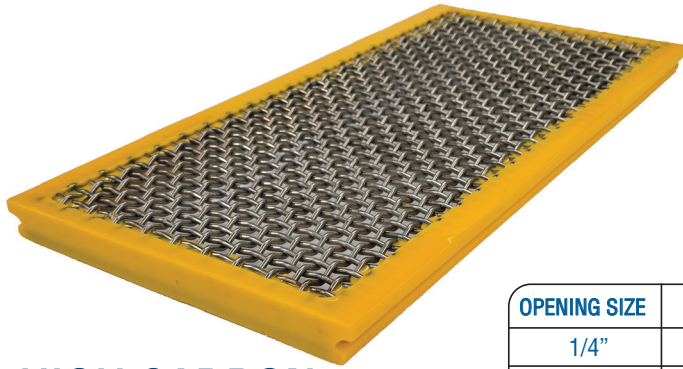
OPENING SIZE	MM	WIRE DIAMETER	PANEL THICKNESS	PANEL SIZE	PART NUMBER
3/32"	2.4	0.047"	1.18" / 30 MM	12 X 24 IN	T1H-03.0473
1/8"	3.2	0.080"	1.18" / 30 MM	12 X 24 IN	T1H-04.0803
5/32"	4.0	0.080"	1.18" / 30 MM	12 X 24 IN	T1H-05.0803
3/16"	4.8	0.092"	1.18" / 30 MM	12 X 24 IN	T1H-06.0923
7/32"	5.6	0.105"	1.18" / 30 MM	12 X 24 IN	T1H-07.1053
1/4"	6.4	0.135"	1.18" / 30 MM	12 X 24 IN	T1H-08.1353
5/16"	7.9	0.135"	1.18" / 30 MM	12 X 24 IN	T1H-10.1353
3/8"	9.6	0.162"	1.18" / 30 MM	12 X 24 IN	T1H-12.1623
7/16"	11.1	0.162"	1.18" / 30 MM	12 X 24 IN	T1H-14.1623
1/2"	12.7	0.192"	1.18" / 30 MM	12 X 24 IN	T1H-16.1923
9/16"	14.3	0.192"	1.18" / 30 MM	12 X 24 IN	T1H-18.1923
5/8"	15.9	0.192"	1.18" / 30 MM	12 X 24 IN	T1H-20.1923
3/4"	19.1	0.244"	1.18" / 30 MM	12 X 24 IN	T1H-24.2443
7/8"	22.2	0.244"	1.18" / 30 MM	12 X 24 IN	T1H-28.2443
1"	25.4	0.313"	1.18" / 30 MM	12 X 24 IN	T1H-32.3133

**STAINLESS
STEEL WIRE**

- IMPROVES FLOW THROUGH
- CORROSION RESISTANT
- INCREASE LIFE OF PANEL

OPENING SIZE	MM	WIRE DIAMETER	PANEL THICKNESS	PANEL SIZE	PART NUMBER
3/32"	2.4	0.047"	1.18" / 30 MM	12 X 24 IN	T1HSS-03.0473
1/8"	3.2	0.080"	1.18" / 30 MM	12 X 24 IN	T1HSS-04.0803
5/32"	4.0	0.080"	1.18" / 30 MM	12 X 24 IN	T1HSS-05.0803
3/16"	4.8	0.092"	1.18" / 30 MM	12 X 24 IN	T1HSS-06.0923
7/32"	5.6	0.105"	1.18" / 30 MM	12 X 24 IN	T1HSS-07.1053
1/4"	6.4	0.135"	1.18" / 30 MM	12 X 24 IN	T1HSS-08.1353
5/16"	7.9	0.135"	1.18" / 30 MM	12 X 24 IN	T1HSS-10.1353
3/8"	9.6	0.162"	1.18" / 30 MM	12 X 24 IN	T1HSS-12.1623
7/16"	11.1	0.162"	1.18" / 30 MM	12 X 24 IN	T1HSS-14.1623
1/2"	12.7	0.192"	1.18" / 30 MM	12 X 24 IN	T1HSS-16.1923
9/16"	14.3	0.192"	1.18" / 30 MM	12 X 24 IN	T1HSS-18.1923
5/8"	15.9	0.192"	1.18" / 30 MM	12 X 24 IN	T1HSS-20.1923
3/4"	19.1	0.244"	1.18" / 30 MM	12 X 24 IN	T1HSS-24.2443
7/8"	22.2	0.244"	1.18" / 30 MM	12 X 24 IN	T1HSS-28.2443

EAGLE HYBRID SCREENS



40MM

**HIGH CARBON
STEEL WIRE**

**KNOCK DOWN
STYLE
HYBRID SCREEN
PANEL**

**12IN X 24IN
CENTER PANEL**

12" is for reference only.
Actual width is 11.81/300mm

OPENING SIZE	MM	WIRE DIAMETER	PANEL THICKNESS	PANEL SIZE	PART NUMBER
1/4"	6.4	0.135"	1.57" / 40 MM	12 X 24 IN	T1H-08.1354
5/16"	7.9	0.135"	1.57" / 40 MM	12 X 24 IN	T1H-10.1354
3/8"	9.6	0.162"	1.57" / 40 MM	12 X 24 IN	T1H-12.1624
7/16"	11.1	0.162"	1.57" / 40 MM	12 X 24 IN	T1H-14.1624
1/2"	12.7	0.192"	1.57" / 40 MM	12 X 24 IN	T1H-16.1924
9/16"	14.3	0.192"	1.57" / 40 MM	12 X 24 IN	T1H-18.1924
5/8"	15.9	0.192"	1.57" / 40 MM	12 X 24 IN	T1H-20.1924
3/4"	19.1	0.244"	1.57" / 40 MM	12 X 24 IN	T1H-24.1924
7/8"	22.2	0.244"	1.57" / 40 MM	12 X 24 IN	T1H-28.2444
1"	25.4	0.313"	1.57" / 40 MM	12 X 24 IN	T1H-32.3134
1-1/16"	27.0	0.313"	1.57" / 40 MM	12 X 24 IN	T1H-34.3134
1-1/8"	28.6	0.313"	1.57" / 40 MM	12 X 24 IN	T1H-36.3134
1-1/4"	31.8	0.313"	1.57" / 40 MM	12 X 24 IN	T1H-40.3134
1-3/8"	35.0	0.313"	1.57" / 40 MM	12 X 24 IN	T1H-44.3134
1-1/2"	38.1	0.313"	1.57" / 40 MM	12 X 24 IN	T1H-48.3134

**STAINLESS
STEEL WIRE**

- IMPROVES FLOW THROUGH
- CORROSION RESISTANT
- INCREASE LIFE OF PANEL

OPENING SIZE	MM	WIRE DIAMETER	PANEL THICKNESS	PANEL SIZE	PART NUMBER
1/4"	6.4	0.135"	1.57" / 40 MM	12 X 24 IN	T1HSS-08.1354
5/16"	7.9	0.135"	1.57" / 40 MM	12 X 24 IN	T1HSS-10.1354
3/8"	9.6	0.162"	1.57" / 40 MM	12 X 24 IN	T1HSS-12.1624
7/16"	11.1	0.162"	1.57" / 40 MM	12 X 24 IN	T1HSS-14.1624
1/2"	12.7	0.192"	1.57" / 40 MM	12 X 24 IN	T1HSS-16.1924
9/16"	14.3	0.192"	1.57" / 40 MM	12 X 24 IN	T1HSS-18.1924
5/8"	15.9	0.192"	1.57" / 40 MM	12 X 24 IN	T1HSS-20.1924
3/4"	19.1	0.244"	1.57" / 40 MM	12 X 24 IN	T1HSS-24.1924
7/8"	22.2	0.244"	1.57" / 40 MM	12 X 24 IN	T1HSS-28.2444

EAGLE HYBRID SCREENS



30MM

HIGH CARBON STEEL WIRE

PIN & LEG STYLE HYBRID SCREEN PANEL

12IN X 24IN
8-PIN STYLE

OPENING SIZE	MM	WIRE DIAMETER	PANEL THICKNESS	PANEL SIZE	PART NUMBER
3/32"	2.4	0.047"	1.18" / 30 MM	12 X 24 IN	P8H-03.0473
1/8"	3.2	0.080"	1.18" / 30 MM	12 X 24 IN	P8H-04.0803
5/32"	4.0	0.080"	1.18" / 30 MM	12 X 24 IN	P8H-05.0803
3/16"	4.8	0.092"	1.18" / 30 MM	12 X 24 IN	P8H-06.0923
7/32"	5.6	0.105"	1.18" / 30 MM	12 X 24 IN	P8H-07.1053
1/4"	6.4	0.135"	1.18" / 30 MM	12 X 24 IN	P8H-08.1353
5/16"	7.9	0.135"	1.18" / 30 MM	12 X 24 IN	P8H-10.1353
3/8"	9.6	0.162"	1.18" / 30 MM	12 X 24 IN	P8H-12.1623
7/16"	11.1	0.162"	1.18" / 30 MM	12 X 24 IN	P8H-14.1623
1/2"	12.7	0.192"	1.18" / 30 MM	12 X 24 IN	P8H-16.1923
9/16"	14.3	0.192"	1.18" / 30 MM	12 X 24 IN	P8H-18.1923
5/8"	15.9	0.192"	1.18" / 30 MM	12 X 24 IN	P8H-20.1923
3/4"	19.1	0.244"	1.18" / 30 MM	12 X 24 IN	P8H-24.1923
7/8"	22.2	0.244"	1.18" / 30 MM	12 X 24 IN	P8H-28.2443
1"	25.4	0.313"	1.18" / 30 MM	12 X 24 IN	P8H-32.3133

STAINLESS STEEL WIRE

- IMPROVES FLOW THROUGH
- CORROSION RESISTANT
- INCREASE LIFE OF PANEL

OPENING SIZE	MM	WIRE DIAMETER	PANEL THICKNESS	PANEL SIZE	PART NUMBER
3/32"	2.4	0.047"	1.18" / 30 MM	12 X 24 IN	P8HSS-03.0473
1/8"	3.2	0.080"	1.18" / 30 MM	12 X 24 IN	P8HSS-04.0803
5/32"	4.0	0.080"	1.18" / 30 MM	12 X 24 IN	P8HSS-05.0803
3/16"	4.8	0.092"	1.18" / 30 MM	12 X 24 IN	P8HSS-06.0923
7/32"	5.6	0.105"	1.18" / 30 MM	12 X 24 IN	P8HSS-07.1053
1/4"	6.4	0.135"	1.18" / 30 MM	12 X 24 IN	P8HSS-08.1353
5/16"	7.9	0.135"	1.18" / 30 MM	12 X 24 IN	P8HSS-10.1353
3/8"	9.6	0.162"	1.18" / 30 MM	12 X 24 IN	P8HSS-12.1623
7/16"	11.1	0.162"	1.18" / 30 MM	12 X 24 IN	P8HSS-14.1623
1/2"	12.7	0.192"	1.18" / 30 MM	12 X 24 IN	P8HSS-16.1923
9/16"	14.3	0.192"	1.18" / 30 MM	12 X 24 IN	P8HSS-18.1923
5/8"	15.9	0.192"	1.18" / 30 MM	12 X 24 IN	P8HSS-20.1923
3/4"	19.1	0.244"	1.18" / 30 MM	12 X 24 IN	P8HSS-24.1923
7/8"	22.2	0.244"	1.18" / 30 MM	12 X 24 IN	P8HSS-28.2443

EAGLE HYBRID SCREENS



40MM

**HIGH CARBON
STEEL WIRE**

**PIN & LEG
STYLE
HYBRID SCREEN
PANEL**

**12IN X 24IN
8-PIN STYLE**

OPENING SIZE	MM	WIRE DIAMETER	PANEL THICKNESS	PANEL SIZE	PART NUMBER
1/4"	6.4	0.135"	1.57" / 40 MM	12 X 24 IN	P8H-08.1354
5/16"	7.9	0.135"	1.57" / 40 MM	12 X 24 IN	P8H-10.1354
3/8"	9.6	0.162"	1.57" / 40 MM	12 X 24 IN	P8H-12.1624
7/16"	11.1	0.162"	1.57" / 40 MM	12 X 24 IN	P8H-14.1624
1/2"	12.7	0.192"	1.57" / 40 MM	12 X 24 IN	P8H-16.1924
9/16"	14.3	0.192"	1.57" / 40 MM	12 X 24 IN	P8H-18.1924
5/8"	15.9	0.192"	1.57" / 40 MM	12 X 24 IN	P8H-20.1924
3/4"	19.1	0.244"	1.57" / 40 MM	12 X 24 IN	P8H-24.1924
7/8"	22.2	0.244"	1.57" / 40 MM	12 X 24 IN	P8H-28.2444
1"	25.4	0.313"	1.57" / 40 MM	12 X 24 IN	P8H-32.3134
1-1/16"	27.0	0.313"	1.57" / 40 MM	12 X 24 IN	P8H-34.3134
1-1/8"	28.6	0.313"	1.57" / 40 MM	12 X 24 IN	P8H-36.3134
1-1/4"	31.8	0.313"	1.57" / 40 MM	12 X 24 IN	P8H-40.3134
1-3/8"	35.0	0.313"	1.57" / 40 MM	12 X 24 IN	P8H-44.3134
1-1/2"	38.1	0.313"	1.57" / 40 MM	12 X 24 IN	P8H-48.3134

**STAINLESS
STEEL WIRE**

- IMPROVES FLOW THROUGH
- CORROSION RESISTANT
- INCREASE LIFE OF PANEL

OPENING SIZE	MM	WIRE DIAMETER	PANEL THICKNESS	PANEL SIZE	PART NUMBER
1/4"	6.4	0.135"	1.57" / 40 MM	12 X 24 IN	P8HSS-08.1354
5/16"	7.9	0.135"	1.57" / 40 MM	12 X 24 IN	P8HSS-10.1354
3/8"	9.6	0.162"	1.57" / 40 MM	12 X 24 IN	P8HSS-12.1624
7/16"	11.1	0.162"	1.57" / 40 MM	12 X 24 IN	P8HSS-14.1624
1/2"	12.7	0.192"	1.57" / 40 MM	12 X 24 IN	P8HSS-16.1924
9/16"	14.3	0.192"	1.57" / 40 MM	12 X 24 IN	P8HSS-18.1924
5/8"	15.9	0.192"	1.57" / 40 MM	12 X 24 IN	P8HSS-20.1924
3/4"	19.1	0.244"	1.57" / 40 MM	12 X 24 IN	P8HSS-24.1924
7/8"	22.2	0.244"	1.57" / 40 MM	12 X 24 IN	P8HSS-28.2444

PIN & LEG STYLE SCREENS



30MM

**URETHANE
PIN & LEG
STYLE
SCREEN PANEL**

**12IN X 24IN
8-PIN STYLE**

OPENING SIZE	MM	PANEL THICKNESS	PANEL SIZE	PART NUMBER
3/32"	2.3	1.18/30MM	12X24	P8-2.3213
7/64"	2.6	1.18/30MM	12X24	P8-2.6213
1/8"	3.1	1.18/30MM	12X24	P8-3.1213
5/32"	4.0	1.18/30MM	12X24	P8-4.0213
3/16"	4.7	1.18/30MM	12X24	P8-4.7213
7/32"	5.6	1.18/30MM	12X24	P8-5.6213
1/4"	6.3	1.18/30MM	12X24	P8-6.3213
9/32"	7.0	1.18/30MM	12X24	P8-7.0213
5/16"	8.1	1.18/30MM	12X24	P8-8.1213
11/32"	8.6	1.18/30MM	12X24	P8-8.6213
3/8"	9.5	1.18/30MM	12X24	P8-9.5213
13/32"	10.2	1.18/30MM	12X24	P8-10.2213
7/16"	11.0	1.18/30MM	12X24	P8-11.0213
1/2"	12.7	1.18/30MM	12X24	P8-12.7213
19/32"	15.0	1.18/30MM	12X24	P8-15.0213
5/8"	15.8	1.18/30MM	12X24	P8-15.8213
3/4"	19.0	1.18/30MM	12X24	P8-19.0213
7/8"	22.2	1.18/30MM	12X24	P8-22.2213
1"	25.4	1.18/30MM	12X24	P8-25.4213

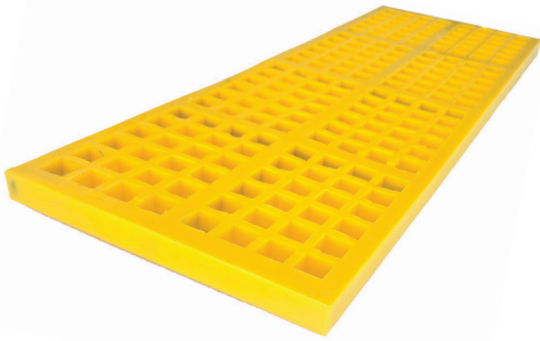
40MM

OPENING SIZE	MM	PANEL THICKNESS	PANEL SIZE	PART NUMBER
3/8"	9.5	1.57/40MM	12X24	P8-9.5214
13/32"	10.2	1.57/40MM	12X24	P8-10.2214
7/16"	11.0	1.57/40MM	12X24	P8-11.0214
1/2"	12.7	1.57/40MM	12X24	P8-12.7214
19/32"	15.0	1.57/40MM	12X24	P8-15.0214
5/8"	15.8	1.57/40MM	12X24	P8-15.8214
3/4"	19.0	1.57/40MM	12X24	P8-19.0214
7/8"	22.2	1.57/40MM	12X24	P8-22.2214
1"	25.4	1.57/40MM	12X24	P8-25.4214
1-1/8"	28.5	1.57/40MM	12X24	P8-28.5214
1-1/2"	38.1	1.57/40MM	12X24	P8-38.1214
2"	50.8	1.57/40MM	12X24	P8-50.8214

Please Note: 0.1mm = 0.004 inches

Aperture tolerances are +/- 0.2mm or +/- 0.008"

POWER SCREENS™



30MM

**URETHANE 85A
WITH OUR
GLIDE-X
ADDITIVE**

35-1/2IN X 12-38IN



OPENING SIZE	MM	PANEL THICKNESS	PANEL SIZE	PART NUMBER
5/32"	4.0	1.18" / 30 MM	35-1/2 X 12-3/8	PS-4.0313
3/16"	4.7	1.18" / 30 MM	35-1/2 X 12-3/8	PS-4.7313
7/32"	5.6	1.18" / 30 MM	35-1/2 X 12-3/8	PS-5.6313
1/4"	6.4	1.18" / 30 MM	35-1/2 X 12-3/8	PS-6.4313
9/32"	7.0	1.18" / 30 MM	35-1/2 X 12-3/8	PS-7.0313
5/16"	7.9	1.18" / 30 MM	35-1/2 X 12-3/8	PS-7.9313
11/32"	8.6	1.18" / 30 MM	35-1/2 X 12-3/8	PS-8.6313
3/8"	9.6	1.18" / 30 MM	35-1/2 X 12-3/8	PS-9.6313
13/32"	10.2	1.18" / 30 MM	35-1/2 X 12-3/8	PS-10.2313
7/16"	11.1	1.18" / 30 MM	35-1/2 X 12-3/8	PS-11.1313
1/2"	12.7	1.18" / 30 MM	35-1/2 X 12-3/8	PS-12.7313
19/32"	15.0	1.18" / 30 MM	35-1/2 X 12-3/8	PS-15.0313
5/8"	15.9	1.18" / 30 MM	35-1/2 X 12-3/8	PS-15.9313
3/4"	19.1	1.18" / 30 MM	35-1/2 X 12-3/8	PS-19.1313
7/8"	22.2	1.18" / 30 MM	35-1/2 X 12-3/8	PS-22.2313
1"	25.4	1.18" / 30 MM	35-1/2 X 12-3/8	PS-25.4313
1-1/16"	27.0	1.18" / 30 MM	35-1/2 X 12-3/8	PS-27.0313
1-1/8"	28.6	1.18" / 30 MM	35-1/2 X 12-3/8	PS-28.6313
1-1/4"	31.8	1.18" / 30 MM	35-1/2 X 12-3/8	PS-31.8313

Power Screen™ is the trademark of Terex Corporation of Norwalk, CT

Please Note: 0.1mm = 0.004 inches

Aperture tolerances are +/- 0.2mm or +/- 0.008"



Item Number	Weight
WEDGE-02	1lb

SOLD IN BOXES OF 25



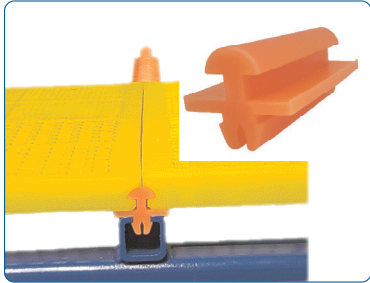
Item Number	Weight
CHDB-LP	1lb

SOLD IN BOXES OF 25



Item Number	Weight
CHDB-PS-150340	7lb

LITTLE MAN



Used on the rail to allow screen panels to be locked into place and secured.

Item Number	Weight
TSSB48-01	1lb

SOLD IN BOXES OF 25

SCREEN WEDGES

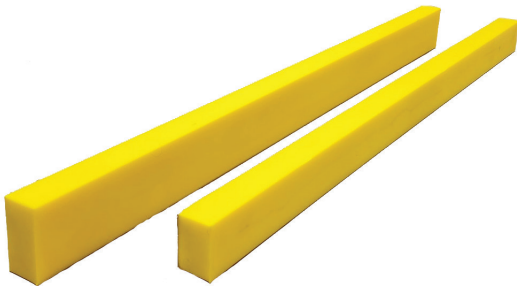


AEM's urethane wedge is designed to secure your side liners without the use of any type of fastener. For added strength, we've also molded around a steel plate for rigidity.

Item Number	Weight
WEDGE-01	1lb

SOLD IN BOXES OF 25

SIDE LINERS



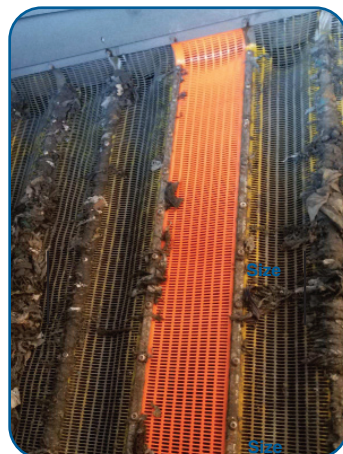
Side liners are molded using 85A urethane around a steel structural insert, keeping the liner straight and rigid to maintain consistent placement in spite of vibration.

Size	Item Number	Weight
2x3x48	ESSL020348	16lbs
2x4x48	ESSL020448	20lbs
2x6x48	ESSL020648	32lbs

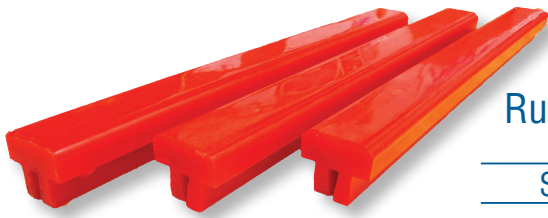
FLIP FLOW SCREENS

- Metal recycling industry
- Aggregate industry
- Dewatering/waste treatment industry

Our Glide-X formula has been significantly outlasting most OEM screens.



URETHANE "T" BARS



Replacement For Rubber Bucker-Up Strips

Shaker Screen Protection

Also referred to as buffer strip, bucker-up strip, buffer channel and crown bar channel. Our high performance urethane outlasts standard rubber.

- Abrasion resistant
- Resists cuts and tears
- Impact resistant
- Positive gripping action



Rail Size	Wear Thickness	Length	Item Number	Color	Weight
1/4"	5/8	48"	T1448	Red	3
1/4"	5/8	60"	T1460	Red	3
3/8"	5/8	48"	T3848	Orange	3
3/8"	5/8	60"	T3860	Orange	4
1/2"	5/8	48"	T1248	Blue	4
1/2"	5/8	60"	T1260	Blue	4

BENEFITS

- Longer screen life
- Reduce noise
- Less maintenance
- Easy installation

SOLD IN BOXES OF 25

EAGLE SPRAY DEFLECTOR



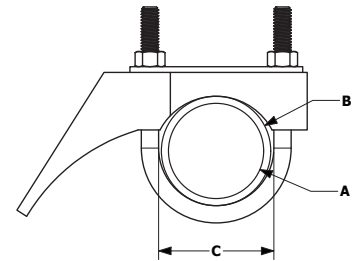
Spray deflectors come with all mounting hardware.



BENEFITS & FEATURES

- Efficient material washing
- Reduce spray bar plugging
- Easy installation
- Long lasting
- Cost effective

SOLD IN BOXES OF 12



Item Number	Nom. Pipe "A"	Pipe OD "B"	Pipe OD "C"	Weight
ESD-1.0	1"	1.32"	1-3/8"	.5
ESD-1.25	1 1/4"	1.66"	1-3/4"	.5
ESD-1.50	1 1/2"	1.90"	2"	.75
ESD-2.0	2"	2.38"	2-1/2"	.75
ESD-3.0	3"	3.50"	3-5/8"	1

EAGLE SPRAY BAR SHIELD



The Eagle Spray Bar Shield easily attaches to your current spray bar to deflect spray and divert it. Designed for screening and crushing applications.



O.D.	Nominal Size	Item Number	Weight
10"	1-1/4" (1.660 Dia)	ESBS-166-10	3 1/2
10"	1-1/2" (1.875 Dia)	ESBS-187-10	3 1/2
10"	2" (2.375 Dia)	ESBS-237-10	3 1/4
10"	2-1/2" (2.875 Dia)	ESBS-287-10	3 1/4
10"	3" (3.5 Dia)	ESBS-350-10	3
12"	1-1/4" (1.660 Dia)	ESBS-166-12	4
12"	1-1/2" (1.875 Dia)	ESBS-187-12	3 3/4
12"	2" (2.375 Dia)	ESBS-237-12	3 1/2
12"	2-1/2" (2.875 Dia)	ESBS-287-12	3 1/2
12"	3" (3.5 Dia)	ESBS-350-12	3 1/4

DEISTER® REPLACEMENT ACCESSORIES



SPRAY BAR SHIELD



O.D.	Nominal Size	Item Number	Weight
8	2" Pipe	ESBS2-237-8	1
12	2" Pipe	ESBS2-237-12	2

INCLUDES HOSE CLAMPS

PIPE COVER



Nominal Pipe Size	Length "A"	ID "B"	Item Number	Weight
2"	48"	2-1/2"	ETC-01	5

*NOTE: 2-3/8 I.D. x 3-3/8 O.D. Half Round

TENSION RAILS



Description	Length	Holes	Item Number	Weight
Steel w/Urethane	48	3	ETR-01	21
Steel	48	3	ETR-02	30

'Deister' is the registered trademark of Deister of Fort Wayne, IN

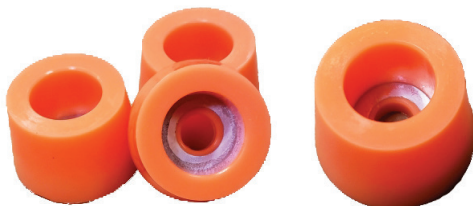
TENSION RAILS

ALL STEEL AND URETHANE COVERED TENSION RAILS

- + Hewitt-Robbins
- + Cedar Rapids
- + Tesmith
- + Pioneer
- + JCI
- + Allis-Chalmers
- + Simplicity
- + El-Jay
- + Deister



SCREEN BOLT PROTECTORS



BENEFITS & FEATURES

- + Protects bolts from corrosion and oxidation
- + Helps avoid bolt fatigue by insulating against vibration

Bolt Size	Item Number	Weight
5/8"	SBP-01	8

**SOLD IN BOXES OF 24
(8LBS PER BOX)**

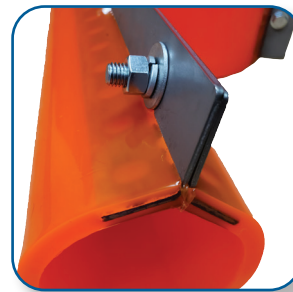
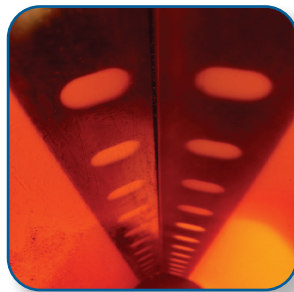
EAGLE SCREEN DECK PIPE COVERS

PROTECT YOUR PIPE!

American Eagle Manufacturing's pipe cover innovation is the ultimate in protection, design and manufacturing versatility to meet your requirements. With our new patent pending inserts that allow for easy installation, we have the most secure pipe cover in the industry. Being the industry leader in proprietary blended urethanes for abrasion and impact, we give you the only pipe cover you will ever want to buy with more flexible size options than ever before.



Patent Pending



IMPORTANT!!!

Pipe sizes are nominal. We manufacture these Pipe covers with an I.D. -0 and up to +.500. Always confirm your pipe finished O.D. Before ordering.

48"

PIPE O.D.	ITEM NUMBER	WT.
4"	ESPC-400-48	20
5"	ESPC-500-48	24
6"	ESPC-600-48	27
8"	ESPC-800-48	34
10"	ESPC-1000-48	41
12"	ESPC-1200-48	44
14"	ESPC-1400-48	54
16"	ESPC-1600-48	61
18"	ESPC-1800-48	65

60"

PIPE O.D.	ITEM NUMBER	WT.
4"	ESPC-400-60	25
5"	ESPC-500-60	30
6"	ESPC-600-60	34
8"	ESPC-800-60	41
10"	ESPC-1000-60	49
12"	ESPC-1200-60	57
14"	ESPC-1400-60	66
16"	ESPC-1600-60	75
18"	ESPC-1800-60	81

72"

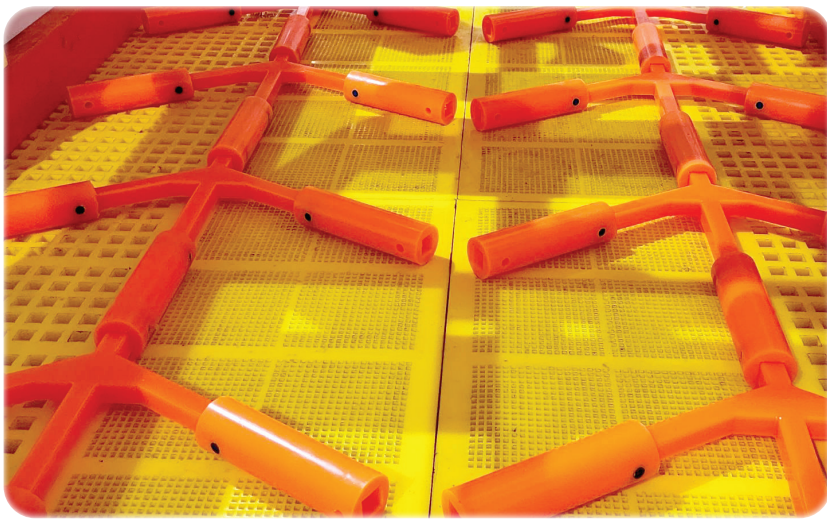
PIPE O.D.	ITEM NUMBER	WT.
4"	ESPC-400-72	29
5"	ESPC-500-72	35
6"	ESPC-600-72	39
8"	ESPC-800-72	50
10"	ESPC-1000-72	60
12"	ESPC-1200-72	69
14"	ESPC-1400-72	80
16"	ESPC-1600-72	90
18"	ESPC-1800-72	98

American Eagle Manufacturing's new tooling design and advanced process allows for an almost limitless size option for pipe covers.

Max O.D. Pipe 18" and Max Length 96"

Custom sizes available upon request

EAGLE DEBLINDING BARS



BENEFITS:

- Increase Productivity
- Less Maintenance
- Screen Safe
- Works for Wet or Dry

Eagle Deblinding bars are an easy and effective way to help eliminate screen blinding. Our polyurethane deblinding bars are a safe way to increase efficiency and productivity. Our deblinding bars use the vibration of the machine to move and bounce on the surface of the wire mesh or modular panels, avoiding material wedging and deblinding your screen.



EDBAKIT

Recommendations based on screen width are as follows:

5' - (2) EDBAKIT

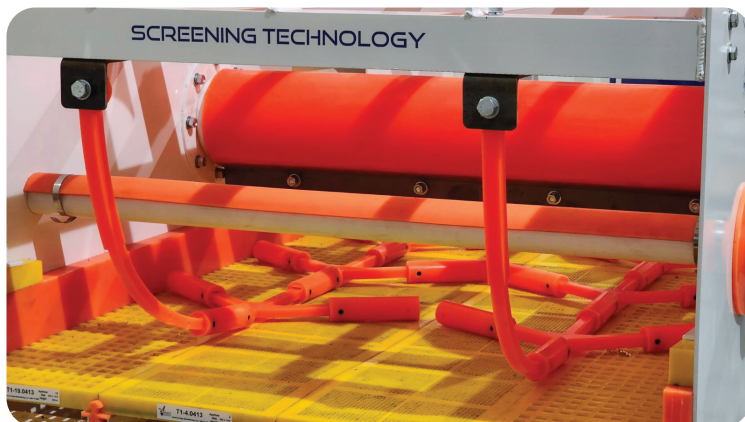
7' - (2) EDBAKIT

8' - (3) EDBAKIT

PART NUMBER

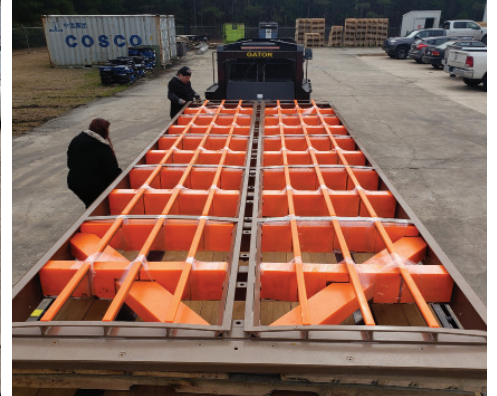
EDBAKIT

Additional individual parts are available upon request. Please see back page with sub assembly part numbers.



PROTECT YOUR INVESTMENT

At the very center of your process is the screen deck. Capital investment, maintenance time and labor go into it... so why not protect it? Specific to each deck configuration, American Eagle has devised a way to provide just the protection it needs. The pictures speak for themselves.



URETHANE MAGNETIC LINER

Without careful handling, there has historically been a risk of cracking or breaking magnets during installation. Without careful placement, the magnets, standing proud from the surface of the urethane or rubber liner, could easily slide out of position.

Without careful maintenance, magnets will oxidize, reducing the bond between magnet and urethane, and eventually compromising the pull between magnet and wall.

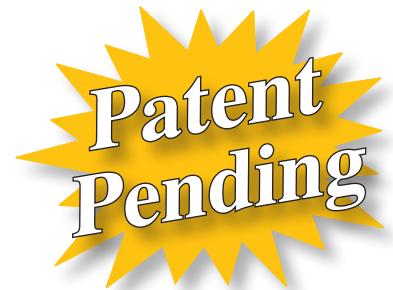
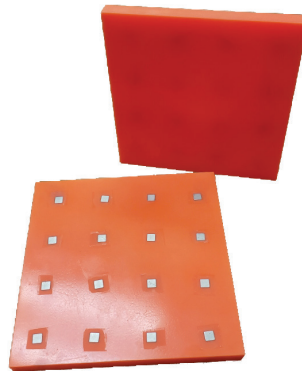
Our newly redesigned magnetic liner panels protect the magnet by encapsulating it while still providing superior magnetic pull to hold the liner in place, even under aggressive conditions.

No drilling, no measuring, no welding. No more chips or breaking, no more oxidation, no more losing magnets.

“INNOVATIVE SOLUTIONS FOR EVERYDAY PROBLEMS.”

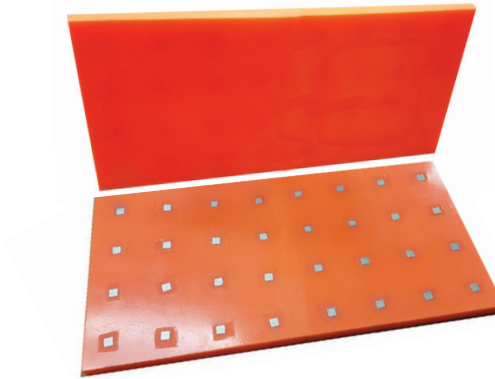
12" X 12" EAGLE MAGNETIC LINER

Size	Item Number	Weight
1x12x12	EMLP-10-1212	7
1-1/2x12x12	EMLP-15-1212	10
2x12x12	EMLP-20-1212	13



12" X 24" EAGLE MAGNETIC LINER

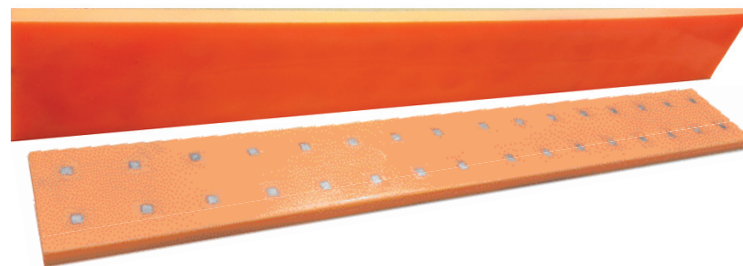
Size	Item Number	Weight
1x12x24	EMLP-10-1224	13
1-1/2x12x24	EMLP-15-1224	19
2x12x24	EMLP-20-1224	25



*16 magnets per square foot equals 175lbs of pull per square foot

48" EAGLE MAGNETIC LINER

Size	Item Number	Weight
1x6x48	EMLP-10-0648	13
1-1/2x6x48	EMLP-15-0648	19
2x6x48	EMLP-20-0648	25
1x8x48	EMLP-10-0848	17
1-1/2x8x48	EMLP-15-0848	25
2x8x48	EMLP-20-0848	33
1x12x48	EMLP-10-1248	28
1-1/2x12x48	EMLP-15-1248	39
2x12x48	EMLP-20-1248	51



CLASSIFIER FLIGHT SHOES



BENEFITS & FEATURES

- + Lighter than steel alternative
- + Non-corrosive
- + Less motor fatigue due to lighter weight
- + Less power consumption
- + Interchangeable between left and right screws

OEM Replacement Shoes available

CLASSIFIER FLIGHT SHOES WORKSHEET

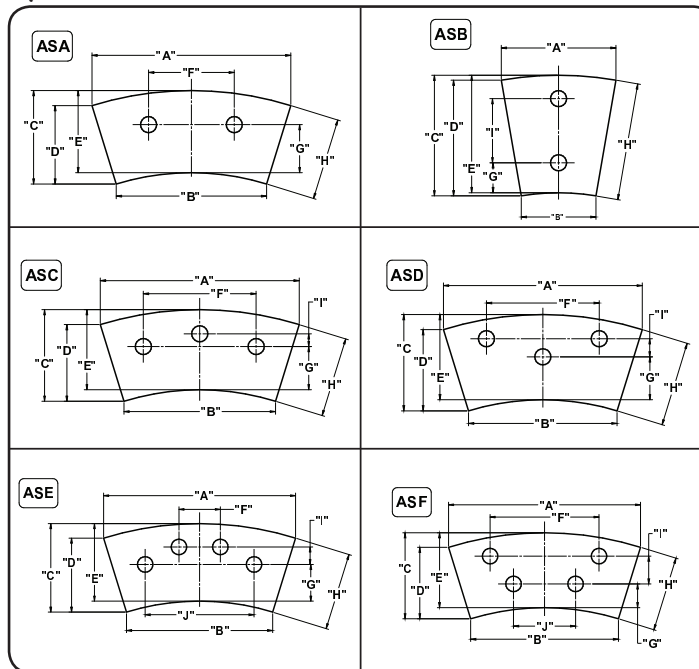


NOTE:

- The information below will allow American Eagle Manufacturing to quote your shoe size. However, it may not be enough information to build your shoe, if a mold does not already exist.
- There are many Classifier Shoe designs available. If your shoe does not fit the designs shown below on this worksheet, please make a drawing or send a sample.

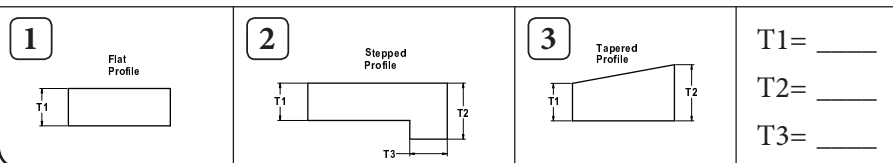
SHOE MOUNTING LOCATION LAYOUT

Layout ASA ASB ASC ASD ASE ASF



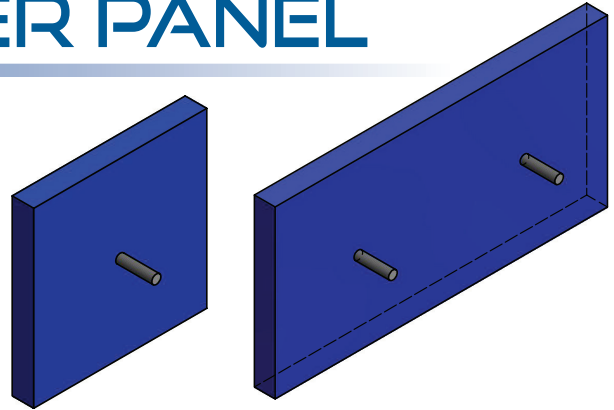
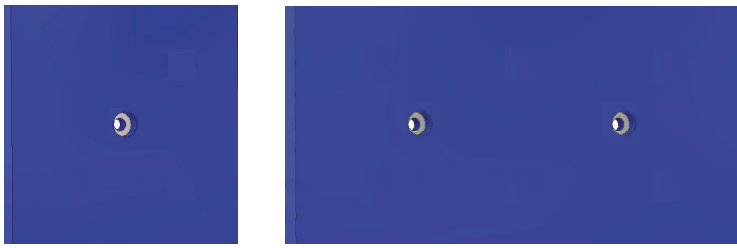
A= _____
 B= _____
 C= _____
 D= _____
 E= _____
 F= _____
 G= _____
 H= _____
 I= _____
 J= _____

SHOE PROFILE STYLE 1 2 3



CAT-CFS-RV0-0513

EAGLE IMPACT LINER PANEL



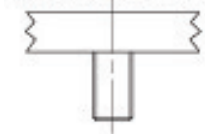
THREADED STUD MOUNTING OPTION

1" THICKNESS		
Size	Item Number	Weight
12x12	EILP-10-1212-TS	13.5
12X18	EILP-10-1218-TS	16.75
12X24	EILP-10-1224-TS	24
18X18	EILP-10-1818-TS	28.50

1-1/2" THICKNESS		
Size	Item Number	Weight
12x12	EILP-15-1212-TS	14.75
12X18	EILP-15-1218-TS	21.50
12X24	EILP-15-1224-TS	30.50
18X18	EILP-15-1818-TS	35.75

2" THICKNESS		
Size	Item Number	Weight
12x12	EILP-20-1212-TS	18.00
12X18	EILP-20-1218-TS	26.50
12X24	EILP-20-1224-TS	37.00
18X18	EILP-20-1818-TS	43.00

Threaded Stud



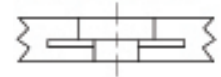
BOLT DOWN MOUNTING OPTION

1" THICKNESS		
Size	Item Number	Weight
12x12	EILP-10-1212-BD	13.5
12X18	EILP-10-1218-BD	16.75
12X24	EILP-10-1224-BD	24
18X18	EILP-10-1818-BD	28.50

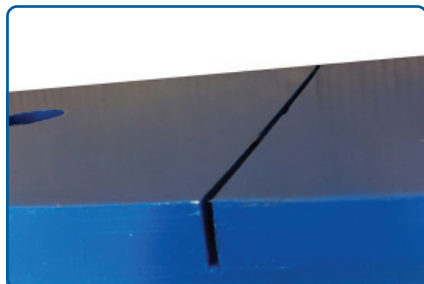
1-1/2" THICKNESS		
Size	Item Number	Weight
12x12	EILP-15-1212-BD	14.75
12X18	EILP-15-1218-BD	21.50
12X24	EILP-15-1224-BD	30.50
18X18	EILP-15-1818-BD	35.75

2" THICKNESS		
Size	Item Number	Weight
12x12	EILP-20-1212-BD	18.00
12X18	EILP-20-1218-BD	26.50
12X24	EILP-20-1224-BD	37.00
18X18	EILP-20-1818-BD	43.00

Bolt Down



EAGLE MODULAR IMPACT PANELS



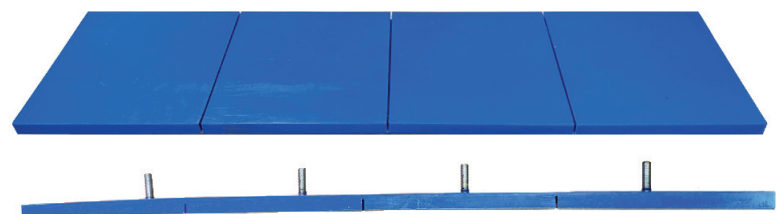
Trimgap™ on 12" centers make it easy to cut into 12 x 12 and 12 x 24. The Trimgap™ also allows for more flexibility when installing on uneven surfaces.

BOLT DOWN

Size	Thickness	Item Number	Weight
12x48	1"	EMIP-10-1248-BD	32

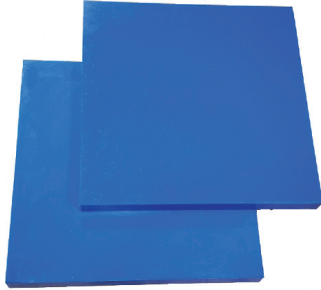
THREADED STUDS

Size	Thickness	Item Number	Weight
12x48	1"	EMIP-10-1248-TS	35

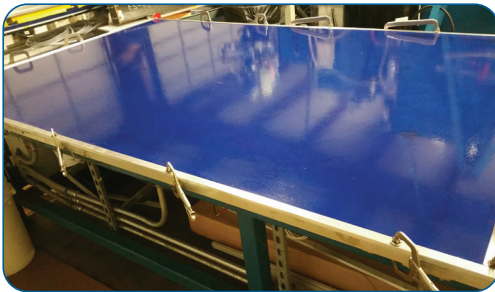


*OTHER SIZES AVAILABLE UPON REQUEST

URETHANE SHEET

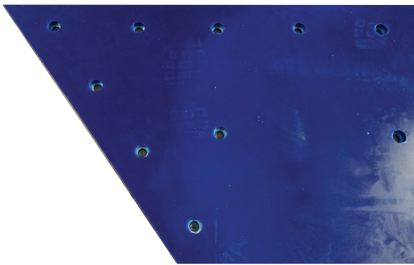


Urethane Sheet and Wear Liner material is manufactured from premium blends of urethane specifically designed for high abrasion resistance. We offer two standard durometers: 60A (soft) and 85A (hard). We offer solid urethane sheet in custom sizes up to 60x120.



We can mold urethane to steel backings upon request. Please give us the steel thickness when requesting a quote.

CUSTOM SIZES AND SHAPES



We offer custom urethane molded sheet and liner products to your specification.

- Standard Durometers: 60A / 72A / 85A
- Standard Colors: Blue / Orange
(we offer other colors upon request, with possible upcharge)
- With steel backings / washers / inserts

60A HARDNESS						
	4'x4'	Weight	4'x8'	Weight	4'x10'	Weight
1/4"	ESM-250-4848B60	26	ESM-250-4896B60	52	ESM-250-48120B60	65
3/8"	ESM-375-4848B60	39	ESM-375-4896B60	78	ESM-375-48120B60	98
1/2"	ESM-500-4848B60	52	ESM-500-4896B60	104	ESM-500-48120B60	130
3/4"	ESM-750-4848B60	78	ESM-750-4896B60	156	ESM-750-48120B60	195
1"	ESM-100-4848B60	104	ESM-100-4896B60	208	ESM-100-48120B60	260

85A HARDNESS						
	4'x4'	Weight	4'x8'	Weight	4'x10'	Weight
1/4"	ESM-250-4848B85	26	ESM-250-4896B85	52	ESM-250-48120B85	65
3/8"	ESM-375-4848B85	39	ESM-375-4896B85	78	ESM-375-48120B85	98
1/2"	ESM-500-4848B85	52	ESM-500-4896B85	104	ESM-500-48120B85	130
3/4"	ESM-750-4848B85	78	ESM-750-4896B85	156	ESM-750-48120B85	195
1"	ESM-100-4848B85	104	ESM-100-4896B85	208	ESM-100-48120B85	260

60A HARDNESS						
	5'x5'	Weight	5'x8'	Weight	5'x10'	Weight
1/4"	ESM-250-6060B60	41	ESM-250-6096B60	65	ESM-250-60120B60	81
3/8"	ESM-375-6060B60	61	ESM-375-6096B60	98	ESM-375-60120B60	122
1/2"	ESM-500-6060B60	81	ESM-500-6096B60	130	ESM-500-60120B60	162
3/4"	ESM-750-6060B60	122	ESM-750-6096B60	195	ESM-750-60120B60	243
1"	ESM-100-6060B60	162	ESM-100-6096B60	260	ESM-100-60120B60	324

85A HARDNESS						
	5'x5'	Weight	5'x8'	Weight	5'x10'	Weight
1/4"	ESM-250-6060B85	41	ESM-250-6096B85	65	ESM-250-60120B85	81
3/8"	ESM-375-6060B85	61	ESM-375-6096B85	98	ESM-375-60120B85	122
1/2"	ESM-500-6060B85	81	ESM-500-6096B85	130	ESM-500-60120B85	162
3/4"	ESM-750-6060B85	122	ESM-750-6096B85	195	ESM-750-60120B85	243
1"	ESM-100-6060B85	162	ESM-100-6096B85	260	ESM-100-60120B85	324

IT'S A NEW ERA OF
INNOVATION
AT AMERICAN EAGLE
MANUFACTURING

EAGLE EDGE USA

American Eagle Manufacturing LLC
866 713 8985
252 633 0603
3280 US Hwy. 70 East
New Bern, North Carolina 28560
AmericanEagleManufacturing.com

