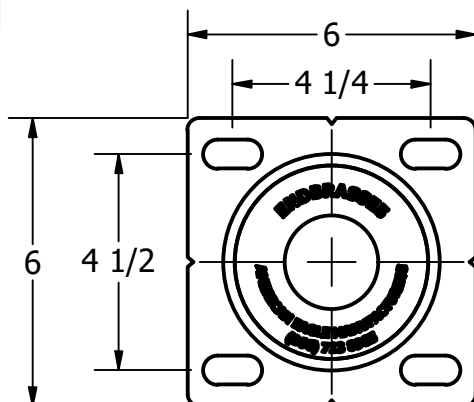
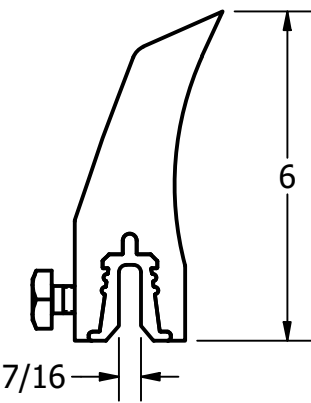
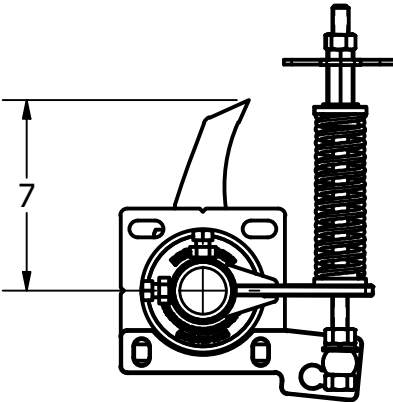
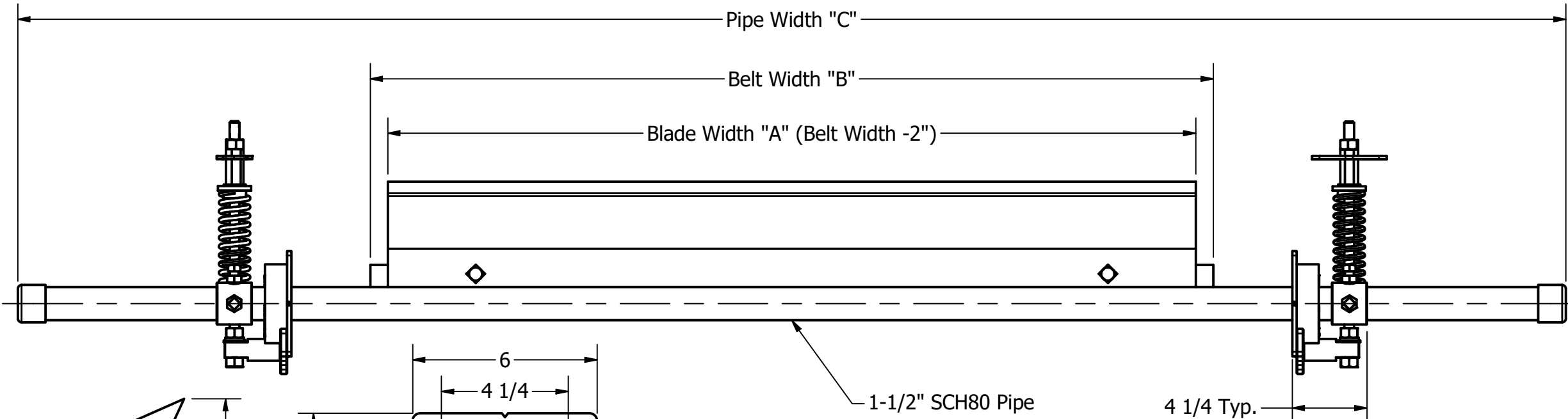
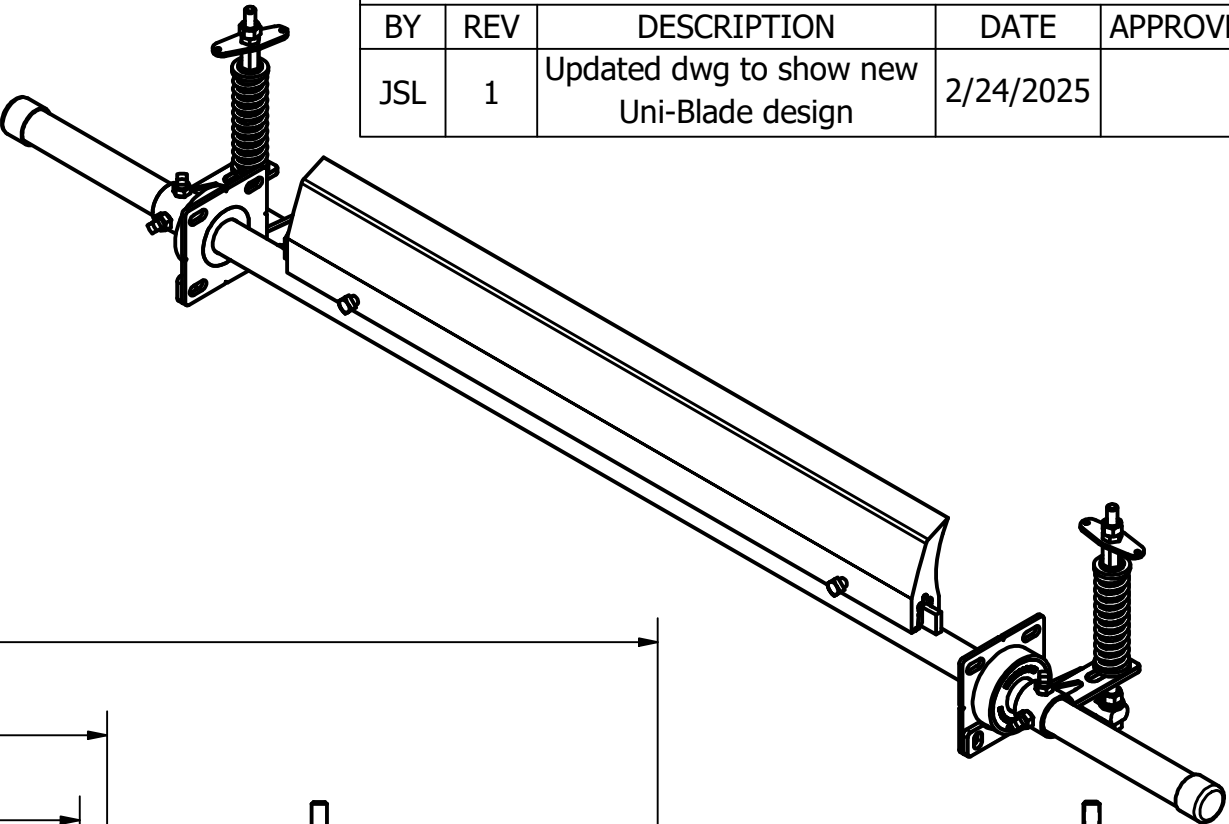


CLEANER SPECIFICATIONS				BLADE SELECTION CHART			
Part No.	Blade Width "A"	Belt Width "B"	Pipe Width "C"	MATL.	P/N SUFFIX	COLOR	DUROMETER
E5SDCDx24	22"	24"	64"	Ev-R-Wear	M	Blue	85A
E5SDCDx30	28"	30"	70"	Standard	U	Orange	85A
E5SDCDx36	34"	36"	76"	Chemical	C	Green	80A
E5SDCDx42	40"	42"	82"	High Heat	H	Red	95A
E5SDCDx48	46"	48"	88"	Food Grade	W	White	85A
E5SDCDx54	52"	54"	94"				
E5SDCDx60	58"	60"	100"				
E5SDCDx72	70"	72"	112"				

REVISION HISTORY				
BY	REV	DESCRIPTION	DATE	APPROVED
JSL	1	Updated dwg to show new Uni-Blade design	2/24/2025	



This drawing in design and detail is the property of American Eagle Manufacturing, LLC. It is returnable upon request and must not be reproduced or the information contained transmitted to any unauthorized person or organization without written consent from American Eagle Manufacturing, LLC. It is to be used only in connection with our work as authorized by us. All rights of design and invention are reserved.



American Eagle Manufacturing, LLC
3280 U.S. Highway 70 East
New Bern, NC 28560
Ph: 252-633-0603
Fax: 252-633-5487
www.americaneaglemanufacturing.com

TITLE E5 Standard Duty Dual Tensioner Primary Cleaner			
SIZE B	DWG NO E5SDCDxENG		REV 1
SCALE 1 / 7		SHEET 1 OF 1	

E5x Blade
Profile
See BLADE SELECTION
CHART for blade characteristics

Mounting Bracket
Dimensions