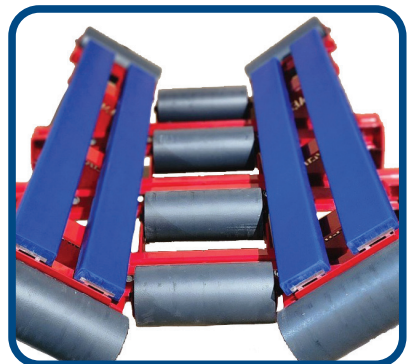


IT'S A NEW ERA OF  
**INNOVATION**  
AT AMERICAN EAGLE  
MANUFACTURING



## SEALING EDGE TECHNOLOGY AND BELT SUPPORT



# SEALING EDGE TECHNOLOGY

## CONTAINMENT VS DUST CONTROL

Note: The AgFlex product should be used for containment of material and not as dust control. If it's dust control you need, our BlueFlex is a 58A urethane, which is friendly to the belt and can have slight pressure applied without damage to your belt. AgFlex 70A Durometer is engineered for containment and, due to the harder durometer, there should be no contact or pressure applied to the belt. AgFlex Skirting should be installed to be about an 1/8 inch above the belt.



## AG FLEX FOR CONTAINMENT

In the aggregate industry and other large-lump-size material industries, containment has always been an issue.

Unlike our flexible BlueFlex dust sealing material the AgFlex is designed for containment. Applications with large gaps between wall and belt cause unwelcome load pressure on soft skirting, resulting in premature failure and more downtime. AgFlex, with its harder 70A Durometer and anti-abrasion characteristics, will contain large lump and bulk product better and last much longer than traditional rubber.

Standard sizes are  
highlighted and normally  
on the shelf  
for immediate shipping.

All rolls are  
standard 50' lengths.

SIZE	ITEM NUMBER	WEIGHT
4" x 1/2	EAf-4-500	57
4" x 3/4	EAf-4-750	86
4" x 1	EAf-4-100	114
5" x 1/2	EAf-5-500	72
5" x 3/4	EAf-5-750	108
5" x 1"	EAf-5-100	144
6" x 1/2	EAf-6-500	88
6" x 3/4	EAf-6-750	112
6" x 1"	EAf-6-100	176
8" x 1/2	EAf-8-500	115
8" x 3/4	EAf-8-750	165
8" x 1"	EAf-8-100	230
10" x 1/2	EAf-10-500	143
10" x 3/4	EAf-10-750	216
10" x 1"	EAf-10-100	286
12" x 1/2	EAf-12-500	176
12" x 3/4	EAf-12-750	224
12" x 1"	EAf-12-100	352



NOTE: ALL NON-STANDARD SIZES ARE NOT RETURNABLE

# SEALING EDGE TECHNOLOGY

## DUST CONTROL

Our BLUE-FLEX SkirtBoard is the solution for dust containment in bulk transfer points. Designed to have low coefficient friction that reduces drag, our skirtboard combines a high tensile strength resulting in longer wear and less tearing compared to rubber skirtboard. The benefits extend beyond dust containment to less maintenance cost, less downtime for replacement and less overall belting and motor fatigue.

# BLUE-FLEX™

# WHITE-FLEX™



**FOOD GRADE  
SKIRT BOARD**

SIZE	ITEM NUMBER	WEIGHT
4" x 1/4	EBF-4-250	29
4" x 3/8	EBF-4-375	43
<b>4" x 1/2</b>	<b>EBF-4-500</b>	<b>57</b>
4" x 3/4	EBF-4-750	86
4" x 1"	EBF-4-100	114
5" x 1/4	EBF-5-250	36
5" x 3/8	EBF-5-375	54
<b>5" x 1/2</b>	<b>EBF-5-500</b>	<b>72</b>
5" x 3/4	EBF-5-750	108
5" x 1"	EBF-5-100	144
6" x 1/4	EBF-6-250	45
6" x 3/8	EBF-6-375	55
<b>6" x 1/2</b>	<b>EBF-6-500</b>	<b>88</b>
<b>6" x 3/4</b>	<b>EBF-6-750</b>	<b>112</b>
6" x 1"	EBF-6-100	176
8" x 1/4	EBF-8-250	60
8" x 3/8	EBF-8-375	85
<b>8" x 1/2</b>	<b>EBF-8-500</b>	<b>115</b>
<b>8" x 3/4</b>	<b>EBF-8-750</b>	<b>165</b>
8" x 1"	EBF-8-100	230
10" x 1/4	EBF-10-250	72
10" x 3/8	EBF-10-375	108
10" x 1/2	EBF-10-500	143
10" x 3/4	EBF-10-750	216
10" x 1"	EBF-10-100	286

Standard sizes are highlighted and normally on the shelf for immediate shipping.

All rolls are standard 50' lengths.

**STANDARD TOLERANCES ON ALL SKIRTBOARD**

- +/- 1/16" width
- +/- 1/8" thickness
- 0/+1" length

*Due to open cast process*

SIZE	ITEM NUMBER	WEIGHT
4" x 1/4	EWF-4-250	29
4" x 3/8	EWF-4-375	43
4" x 1/2	EWF-4-500	57
4" x 3/4	EWF-4-750	86
4" x 1"	EWF-4-100	114
5" x 1/4	EWF-5-250	36
5" x 3/8	EWF-5-375	54
5" x 1/2	EWF-5-500	72
5" x 3/4	EWF-5-750	108
5" x 1"	EWF-5-100	144
6" x 1/4	EWF-6-250	45
6" x 3/8	EWF-6-375	55
6" x 1/2	EWF-6-500	88
6" x 3/4	EWF-6-750	112
6" x 1"	EWF-6-100	176
8" x 1/4	EWF-8-250	60
8" x 3/8	EWF-8-375	85
8" x 1/2	EWF-8-500	115
8" x 3/4	EWF-8-750	165
8" x 1"	EWF-8-100	230
10" x 1/4	EWF-10-250	72
10" x 3/8	EWF-10-375	108
10" x 1/2	EWF-10-500	143
10" x 3/4	EWF-10-750	216
10" x 1"	EWF-10-100	286

# SEALING EDGE TECHNOLOGY

Delta-Flex versus its competitors:  
This contest is already won.

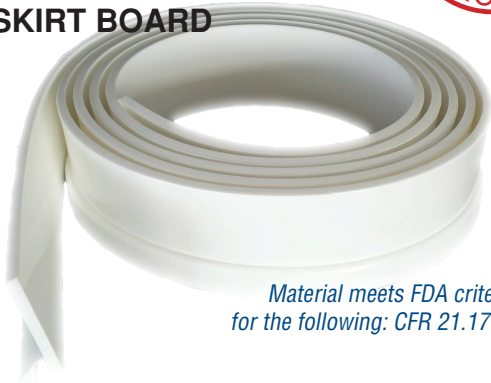
Our Delta Flex dual sealing skirt board is the ultimate solution for dust control and bulk product containment at all transfer points.

The main body contains your bulk material in the transfer point while the outer seal manages dust control. Because our material compound is more flexible, it will conform to your belt profile, even if there is no support or sagging between rollers.

Our material is designed to have low coefficient friction that reduces drag. Delta Flex material combines high tensile strength resulting in less wear and less tearing as compared to rubber skirt board.



**FOOD GRADE  
SKIRT BOARD**



*Material meets FDA criteria  
for the following: CFR 21.177.1680*



## URETHANE BLUE

ITEM NUMBER	HEIGHT	LENGTH	WEIGHT
DF3-500	3"	50'	47
DF4-500	4"	50'	66
DF5-500	5"	50'	82
DF6-500	6"	50'	94

## URETHANE WHITE

ITEM NUMBER	HEIGHT	LENGTH	WEIGHT
DFW3-500	3"	50'	47
DFW4-500	4"	50'	66
DFW5-500	5"	50'	82
DFW6-500	6"	50'	94

## EPDM

ITEM NUMBER	HEIGHT	LENGTH	WEIGHT
DFE5-500	5"	50'	83

# RUBBER SKIRTING

High heat and chemical compounds



DUROMETER  
**70A**

## EPDM

SIZE	ITEM NUMBER	WEIGHT
6 x 1/2 x 50'	EBFE-6-500	88
6 x 3/4 x 50'	EBFE-6-750	112
8 x 1/2 x 50'	EBFE-8-500	115
8 x 3/4 x 50'	EBFE-8-750	165

Specialty formulated rubber compounds



DUROMETER  
**45A**

## ORANGE

SIZE	ITEM NUMBER	WEIGHT
6 x 1/2 x 50'	EOFR-6-500	88
6 x 3/4 x 50'	EOFR-6-750	112
8 x 1/2 x 50'	EOFR-8-500	115
8 x 3/4 x 50'	EOFR-8-750	165

DUROMETER  
**40A**

## RED

SIZE	ITEM NUMBER	WEIGHT
6 x 1/2 x 50'	ERFR-6-500	88
6 x 3/4 x 50'	ERFR-6-750	112
8 x 1/2 x 50'	ERFR-8-50	115
8 x 3/4 x 50'	ERFR-8-750	165

Profiled Rubber **M-Flex®**



DUROMETER  
**65A**

ITEM NUMBER	HEIGHT	LENGTH	WEIGHT
MFR8-100	8"	50	175

# SEALING EDGE TECHNOLOGY

## SNAPFLEX

Our SnapFlex is designed to contain product consistently without adding pressure to your belt. Because of the way it seals without force, even if your belt starts walking, there is no worry that your skirting will walk off the belt. When installed with the custom channel options, there will be no need to adjust for the life of the skirting.

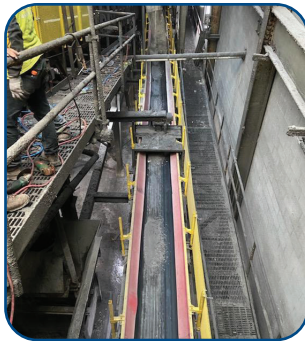
SnapFlex is the no-worry skirtboard.

- Chute too wide? *No problem.*
- Belt walking excessively? *No problem.*
- Limited chute space? *No problem.*
- No more clamps.
- No more adjustment.

*No more worries.*



## SNAP FLEX CONTAINMENT



Some of our distributors don't think outside the box. They take away the box entirely. Using AEM SnapFlex channel designs specific to their customers' applications, our SnapFlex creates a superior seal even on the tail.

**IT EVEN IMPRESSED US!**

*Ask us about your application!*



## 8" SNAP FLEX

ITEM NUMBER	HEIGHT	LENGTH	WEIGHT
ESF-8-500-10	8"	10'	23.33
ESF-8-500-25	8"	25'	58.33
ESF-8-500-50	8"	50'	116.67

## 10" SNAP FLEX

ITEM NUMBER	HEIGHT	LENGTH	WEIGHT
ESF-10-500-10	10"	10'	28.33
ESF-10-500-25	10"	25'	70.83
ESF-10-500-50	10"	50'	141.67

## 12" SNAP FLEX

ITEM NUMBER	HEIGHT	LENGTH	WEIGHT
ESF-12-500-10	12"	10'	33.33
ESF-12-500-25	12"	25'	83.33
ESF-12-500-50	12"	50'	166.67

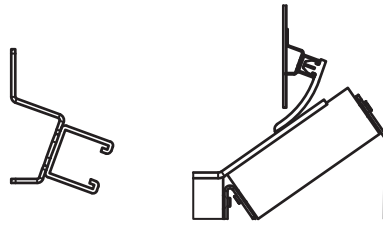
# SEALING EDGE TECHNOLOGY

## SNAPFLEX

### CHANNEL OPTIONS

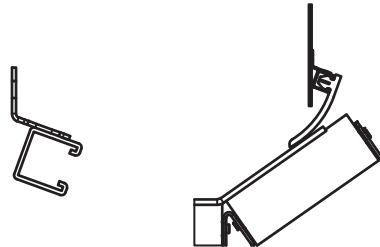
PART NUMBER	LENGTH
SFC20-02	60"

Recommended for most "outside wall" applications.



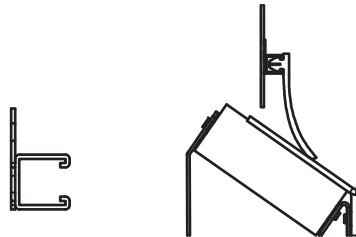
PART NUMBER	LENGTH
SFC20-01	60"

Recommended for limited space applications only.

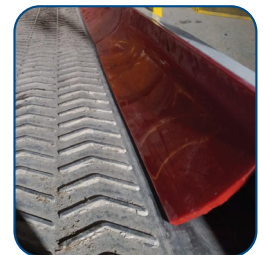


PART NUMBER	LENGTH
SFC90-01	60"

Recommended for "inside chute wall" applications.



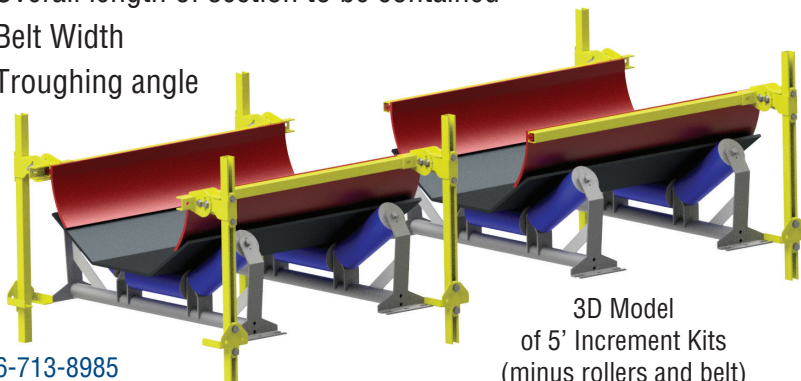
PART NUMBER	LENGTH
SFC90-02	60"



## NO CHUTE WALLS? NO PROBLEM.

Required information for quote:

1. Overall length of section to be contained
2. Belt Width
3. Troughing angle



3D Model of 5' Increment Kits (minus rollers and belt)



# SKIRT BOARD RATING

	Durometer	Abrasion Resistance	Cut Strength	Sealing	Containment	MSHA Approved	FDA Approvable	Heat Resistance @ 180F	Chemical Resistance
Blue-Flex	57A	Excellent	Good	Excellent	Good	Yes	Yes	Fair	Fair
Ag-Flex	70A	Excellent	Excellent	Good	Excellent	Yes	Yes	Fair	Good
Snap-Flex	70A	Excellent	Excellent	Excellent	Excellent	Yes	Yes	Fair	Good
White-Flex	57A	Excellent	Good	Excellent	Good	Yes	Yes	Fair	Fair
Delta-Flex	70A	Excellent	Excellent	Excellent	Excellent	Yes	Yes	Fair	Good
Delta-Flex Food Grade	70A	Excellent	Excellent	Excellent	Excellent	Yes	Yes	Fair	Good
Delta-Flex EPDM	70A	Good	Excellent	Excellent	Excellent	No	No	Excellent	Excellent
Orange Rubber	45A	Fair	Poor	Good	Good	No	No	Fair	Good
Red Rubber	40A	Fair	Poor	Good	Good	No	No	Fair	Good

AEM uses only the highest quality urethanes for our Sealing Edge Technology products. These urethane systems are designed to deliver the best physical properties and wear characteristics available, while still keeping an eye on your bottom line. For places where urethane just won't do (and yes, there are a few) we also offer our Delta Flex in EPDM and standard flat skirting.

## MSHA IC-379/01 Approval – Report Summary

*This construction and the information provided meet the requirements of the Standard Application Procedures for Acceptance of Flame-Resistant Solid Products Taken Into Mines.*

Date: September 9, 2021	PAR: 116810
Company: American Eagle Manufacturing, LLC	
Product: BlueFlex, AgFlex, SnapFlex, Eagle Armor Sheet material, AEM replacement blades, DeltaFlex, Adjustable urethane liner	
Usage: Belt Skirt, Chute liner, belt wiper	
Sample/Style: 58A: ¼ inch, one inch; 85A: ¼ inch, one inch	Color: Blue
<i>Procedure:</i> After conditioning, samples exposed to 60 seconds of ignition by a Bunsen burner flame in still air, followed by monitoring for pass/fail criteria under 300 feet/min airflow. For detailed procedure, please reference 30 CFR 18.65 or Approval and Certification Center document ASTP 5007.	
<i>Flame:</i> 3 inches, blue with inner cone	
<i>Air velocity:</i> 300 feet/min. (tolerance: +/- 10%)	
<i>Time to reach velocities:</i> Averages: 8.2s 8.2s 8.2s 8.2s (4 sample sets) (Tolerance +/- 1s)	
<b>Test Results:</b>	
Flame Time (s):	Afterglow (s) (Includes flame time):
0	0
0	0
0	0
0	0
Average: 0	0
<i>Criteria:</i> 60 s maximum	180 s maximum
<i>Pass/Fail:</i> Pass	
Melts.Fallen material burns for [Range: 13-17 s], [Range: 13-19 s], [Range: 6-24 s], [Range: 5-25 s]	

Based on Data Sheet 2, PAR: 116810  
ASAP 5001, ASTP 5007,

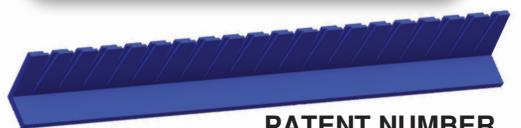
30 CFR 18.65, ASTM D378-Section 15  
Documentation available upon request

# OMEGA SEAL AND CLAMP



Taking our Sealing Edge Technology™ to a new level, our Omega Seal and Clamp will revolutionize your load zone.

**PATENT NUMBER  
9938087**



**PATENT NUMBER  
9938087**

## URETHANE

ITEM NUMBER	LENGTH	DESCRIPTION
OS548	48"	Omega Seal
OS572	72"	Omega Seal

## EPDM-HIGH HEAT APPLICATION

ITEM NUMBER	LENGTH	DESCRIPTION
OSE548	48"	Omega Seal
OSE572	72"	Omega Seal

The first and only of its kind: A seal specifically designed to seal the tail end of a load zone. The only profiled seal that completely lays to match the profile of your belt. It also creates a sealed gap area that does not allow the carry back to migrate outside of the load zone.

Paired with our Sealed Edge Technology, the Omega Seal and Clamp has the potential to completely revitalize your load zone.

### HOW TO CHOOSE THE RIGHT SIZE:

When Choosing the clamp size always make sure you choose the size that best fits the Chute width. If your chute is in between the standard sizes always default to the next lower size.

Then choose the troughing degree. This choice is not based on the troughing rollers on the conveyor. It is based on the transition into the chute. Most load zones have 35 degree troughing rollers but depending on the transition of the belt from the tail pulley into the chute it may be best to use a 20 degree.

If you are unsure please ask for our worksheet and if completed we can choose the best size for your chute.

### 20 DEGREE

ITEM NUMBER	CHUTE WIDTH	WEIGHT
OSC2014	14"	20
OSC2016	16"	22
OSC2018	18"	23
OSC2020	20"	24
OSC2022	22"	26
OSC2024	24"	28
OSC2026	26"	30
OSC2028	28"	32
OSC2030	30"	35
OSC2032	32"	37
OSC2034	34"	40
OSC2036	36"	44
OSC2038	38"	48
OSC2040	40"	55

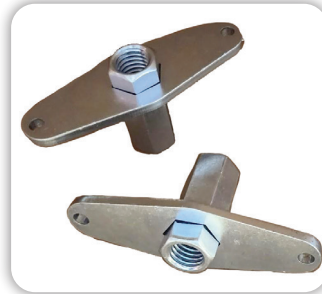
### 35 DEGREE

ITEM NUMBER	CHUTE WIDTH	WEIGHT
OSC3514	14"	20
OSC3516	16"	22
OSC3518	18"	23
OSC3520	20"	24
OSC3522	22"	26
OSC3524	24"	28
OSC3526	26"	30
OSC3528	28"	32
OSC3530	30"	35
OSC3532	32"	37
OSC3534	34"	40
OSC3536	36"	44
OSC3538	38"	48
OSC3540	40"	55

### OTHER CHUTE WIDTHS AVAILABLE UPON REQUEST.

Note: In many cases the chutes are wider than what CEMA recommends for belt width. Please do not base your choice on belt width. Chute Width is what matters.

# EAGLE CLAW CLAMP



Taking our Sealing Edge Technology™ to a new level, our Eagle Claw Clamp will revolutionize your loadzone.

The Eagle Claw Clamp solves the issue. Armed with various steel engaging tips, the clamp bites into the skirtboard like teeth, drawing into the skirtboard on an angle. This creates a complete engaging trap that holds the skirtboard in place at all times, allowing the skirtboard to do what it was designed to do. Because the skirtboard cannot move from the Eagle Claw Clamp, the skirtboard can flex, to accommodate belt splices, clips or patches passing through the load zone.



OVERALL HEIGHT  
**6"**

ITEM NUMBER	SIZE	DESCRIPTION	WEIGHT
ECC48	48"	Eagle Claw Clamp with Standard Rail Attachment	23
ECC60	60"	Eagle Claw Clamp with Standard Rail Attachment	28

# EAGLE CLAW CLAMP & PLATE



OVERALL HEIGHT  
**6 1/2"**

Plate is designed to shore up load zone outer walls that are inadequate.

Note: Distance between belt and chute wall should be 1" to 2".

ITEM NUMBER	SIZE	DESCRIPTION	WEIGHT
ECCP48	48"	Eagle Claw Clamp with 1/4" Thick Plate	38
ECCP60	60"	Eagle Claw Clamp with 1/4" Thick Plate	47

# EAGLE CLAW CLAMP & AR LINER



OVERALL HEIGHT  
**10"**

AR Liner designed for inside chute walls.

ITEM NUMBER	SIZE	DESCRIPTION	WEIGHT
ECCL48	48"	Eagle Claw Clamp with AR Liner	37
ECCL60	60"	Eagle Claw Clamp with AR Liner	46

# EAGLE CLAW CLAMP



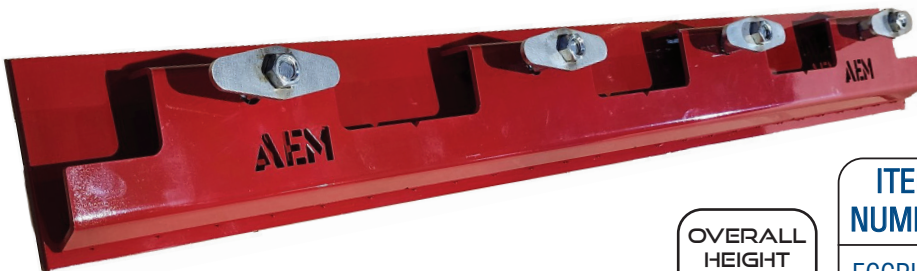
## LOW PROFILE EAGLE CLAW CLAMP



OVERALL HEIGHT  
**4 1/2"**

ITEM NUMBER	SIZE	DESCRIPTION	WEIGHT
ECCLP48	48"	Eagle Claw Clamp-Low Profile Standard Rail Attachment 48"	18
ECCLP60	60"	Eagle Claw Clamp-Low Profile Standard Rail Attachment 60"	22

## LOW PROFILE EAGLE CLAW CLAMP & PLATE



OVERALL HEIGHT  
**5 1/2"**

Plate is designed to shore up load zone outer walls that are inadequate.

Note: Distance between belt and chute wall should be 1" to 2".

ITEM NUMBER	SIZE	DESCRIPTION	WEIGHT
ECCPLP48	48"	Eagle Claw Clamp-Low Profile with 1/4" Plate - 48"	33
ECCPLP60	60"	Eagle Claw Clamp-Low Profile with 1/4" Plate - 60"	41

## LOW PROFILE EAGLE CLAW CLAMP & AR LINER

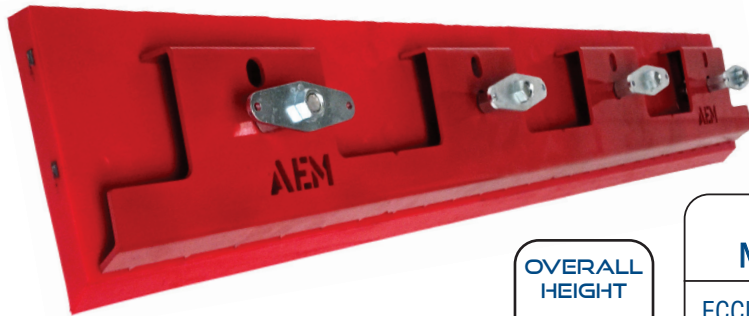


OVERALL HEIGHT  
**8"**

AR Liner designed for inside chute walls.

ITEM NUMBER	SIZE	DESCRIPTION	WEIGHT
ECCLLP48	48"	Eagle Claw Clamp-48" with AR Liner	48
ECCLLP60	60"	Eagle Claw Clamp-60" with AR Liner	60

# EAGLE CLAW CLAMP & CANOE LINERS



PATENT NUMBER  
9938087

OVERALL  
HEIGHT  
**8"**

ITEM NUMBER	SIZE	DESCRIPTION	WEIGHT
ECCLPUL8-1048C	48"	Eagle Claw Clamp Low Profile with Urethane Canoe Liner	39
ECCLPUL8-1060C	60"	Eagle Claw Clamp Low Profile with Urethane Canoe Liner	50

STAINLESS STEEL AVAILABLE UPON REQUEST



OVERALL  
HEIGHT  
**10"**

ITEM NUMBER	SIZE	DESCRIPTION	WEIGHT
ECCUL10-1048C	48"	Eagle Claw Clamp with Urethane Canoe Liner	49
ECCUL10-1060C	60"	Eagle Claw Clamp with Urethane Canoe Liner	60

## CANOE LINER (STANDARD)



6" SIZE	35° BEVEL	NO BEVEL
1 X 6 X 48	UL6-1048C	UL6-1048A
1-1/2 X 6 X 48	UL6-1548C	UL6-1548A
1 X 6 X 60	UL6-1060C	UL6-1060A
1-1/2 X 6 X 60	UL6-1560C	UL6-1560A
2 X 6 X 60	UL6-2060C	UL6-2060A

8" SIZE	35° BEVEL	NO BEVEL
1 X 8 X 48	UL8-1048C	UL8-1048A
1-1/2 X 8 X 48	UL8-1548C	UL8-1548A
1 X 8 X 60	UL8-1060C	UL8-1060A
1-1/2 X 8 X 60	UL8-1560C	UL8-1560A
2 X 8 X 60	UL8-2060C	UL8-2060A

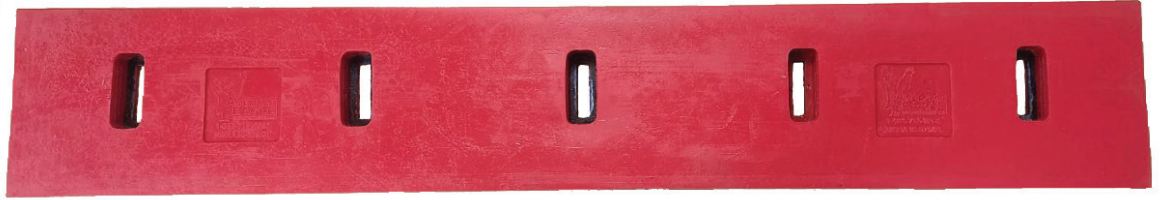
10" SIZE	35° BEVEL	NO BEVEL
1 X 10 X 48	UL10-1048C	UL10-1048A
1-1/2 X 10 X 48	UL10-1548C	UL10-1548A
1 X 10 X 60	UL10-1060C	UL10-1060A
1-1/2 X 10 X 60	UL10-1560C	UL10-1560A

12" SIZE	35° BEVEL	NO BEVEL
1 X 12 X 48	UL12-1048C	UL12-1048A
1-1/2 X 12 X 48	UL12-1548C	UL12-1548A
1 X 12 X 60	UL12-1060C	UL12-1060A
1-1/2 X 12 X 60	UL12-1560C	UL12-1560A

# HEAVY DUTY CANOE LINERS



Available in heights of 10" & 12"  
 -Lengths of 48" and 60" -Thickness of 2"



10" SIZE	35° BEVEL	NO BEVEL
2 X 10 X 48	ULHD10-2048C	ULHD10-2048A
2 X 10 X 60	ULHD10-2060C	ULHD10-2060A

12" SIZE	35° BEVEL	NO BEVEL
2 X 12 X 48	ULHD12-2048C	ULHD12-2048A
2 X 12 X 60	ULHD12-2060C	ULHD12-2060A

14" SIZE	35° BEVEL	NO BEVEL
2 X 14 X 48	ULHD14-2048C	ULHD14-2048A
2 X 14 X 60	ULHD14-2060C	ULHD14-2060A

## CANOE LINER DEFLECTOR & PROTECTOR SHIELD

Please order by size of canoe liner that is to be protected.

If the Canoe Liner is 1" - 1-1/2" thick:

HEIGHT	48" LENGTH	60" LENGTH
6"-10"	ULP1-48	ULP1-60
12"-14"	ULP1X-48	ULP1X-60

If the Canoe Liner is 2" thick:

HEIGHT	48" LENGTH	60" LENGTH
6"-10"	ULP2-48	ULP2-60
12"-14"	ULP2X-48	ULP2X-60



CANOE LINER NOT INCLUDED. PHOTO FOR REFERENCE ONLY

## T-BOLT KITS

ORDER 1 KIT PER CANOE LINER.

48" Length	ETBKIT-48	(4 SETS)
60" Length	ETBKIT-60	(5 SETS)



# SPECIALTY CONTAINMENT LINERS



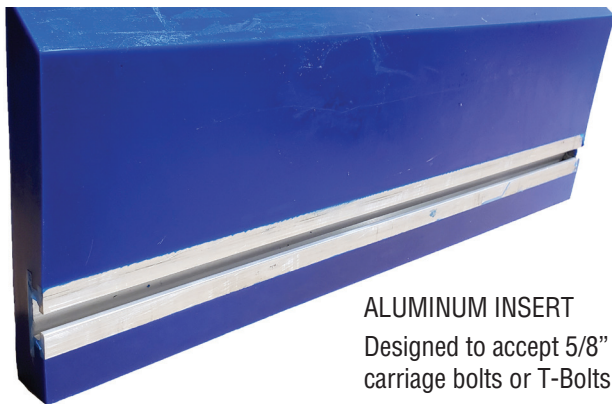
## CANOE HOOK LINER



9" SIZE	35° BEVEL
1 X 48	UL9-1048-EXT
1 X 60	UL9-1060-EXT

## BUMPER BOARD SPECIALTY CONTAINMENT

### BUMPER BOARD



**ALUMINUM INSERT**  
Designed to accept 5/8" carriage bolts or T-Bolts



SIZE	35° BEVEL	NO BEVEL
2 X 6 X 48	BB6-2048C	BB6-2048A
2 X 6 X 60	BB6-2060C	BB6-2060A
2 X 8 X 48	BB8-2048C	BB8-2048A
2 X 8 X 60	BB8-2060C	BB8-2060A
2 X 10 X 48	BB10-2048C	BB10-2048A
2 X 10 X 60	BB10-2060C	BB10-2060A
2 X 12 X 48	BB12-2048C	BB12-2048A
2 X 12 X 60	BB12-2060C	BB12-2060A

\*All standard bumper board is 2 inches thick, and the slot center is 2-1/2 inches from the top of the part.

NOTE: These are our standard offerings on canoe liners and bumper boards. Custom lengths and dimensions can be made available upon request. Fill out our worksheet for quote and delivery.

## AR 400 REPLACEMENT LINERS



ITEM NUMBER	HEIGHT	LENGTH
EARL8-48	8"	48"
EARL8-60	8"	60"
EARL10-48	10"	48"
EARL10-60	10"	60"

# BELT SUPPORT

## Heavy Duty Impact Bed



48" bed will accommodate  
20, 35, 45 degree troughing rollers

Belt Width	Item Number	Bed Length	Frame QTY.	Bars QTY.
24"	EIBH24-48	48"	4	6
30"	EIBH30-48	48"	4	6
36"	EIBH36-48	48"	4	9
42"	EIBH42-48	48"	4	9
48"	EIBH48-48	48"	4	12
54"	EIBH54-48	48"	4	12
60"	EIBH60-48	48"	4	15
72"	EIBH72-48	48"	4	15

60" bed will accommodate  
20, 35, 45 degree troughing rollers

Belt Width	Item Number	Bed Length	Frame QTY.	Bars QTY.
24"	EIBH24-60	60"	4	6
30"	EIBH30-60	60"	4	6
36"	EIBH36-60	60"	4	9
42"	EIBH42-60	60"	4	9
48"	EIBH48-60	60"	4	12
54"	EIBH54-60	60"	4	12
60"	EIBH60-60	60"	4	15
72"	EIBH72-60	60"	4	15

## Extra Heavy Duty Impact Bed



60" bed will accommodate  
20, 35, 45 degree troughing rollers

Belt Width	Item Number	Bed Length	Frame QTY.	Bars QTY.
24"	EIBXH24-60	60"	5	6
30"	EIBXH30-60	60"	5	6
36"	EIBXH36-60	60"	5	9
42"	EIBXH42-60	60"	5	9
48"	EIBXH48-60	60"	5	12
54"	EIBXH54-60	60"	5	12
60"	EIBXH60-60	60"	5	15
72"	EIBXH72-60	60"	5	15



## 6" Wing Roller & Bracket



Note: Sold in sets of two.

### IMPACT BED Replacement Parts

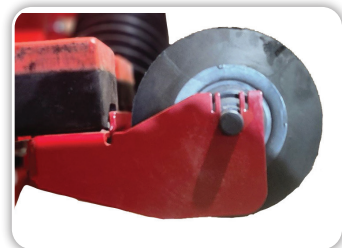
Belt Width	Item Number
24"	EIBWRA6-24
30"	EIBWRA6-30
36"	EIBWRA6-36
42"	EIBWRA6-42
48"	EIBWRA6-48
54"	EIBWRA6-54
60"	EIBWRA6-60
72"	EIBWRA6-72

## Impact Bars



### IMPACT BED Replacement Parts

Bar Length	Item Number
42"	EIBR-42
48"	EIBR-48
54"	EIBR-54
60"	EIBR-60



# BELT SUPPORT

## Medium Duty Impact Bed



48" bed will accommodate  
20, 35, 45 degree troughing rollers

Belt Width	Item Number	Bed Length	Frame QTY.	Bars QTY.
24"	EIBM24-48	48"	3	6
30"	EIBM30-48	48"	3	6
36"	EIBM36-48	48"	3	9
42"	EIBM42-48	48"	3	9
48"	EIBM48-48	48"	3	12
54"	EIBM54-48	48"	3	12
60"	EIBM60-48	48"	3	15
72"	EIBM72-48	48"	3	15

60" bed will accommodate  
20, 35, 45 degree troughing rollers

Belt Width	Item Number	Bed Length	Frame QTY.	Bars QTY.
24"	EIBM24-60	60"	3	6
30"	EIBM30-60	60"	3	6
36"	EIBM36-60	60"	3	9
42"	EIBM42-60	60"	3	9
48"	EIBM48-60	60"	3	12
54"	EIBM54-60	60"	3	12
60"	EIBM60-60	60"	3	15
72"	EIBM72-60	60"	3	15

## Standard Duty Impact & Roll Bed



48" bed will accommodate  
20, 35, 45 degree troughing rollers

Belt Width	Item Number	Bed Length	Frame QTY.	Bars QTY.
24"	EIRB24-48	48"	3	4
30"	EIRB30-48	48"	3	4
36"	EIRB36-48	48"	3	6
42"	EIRB42-48	48"	3	6
48"	EIRB48-48	48"	3	8
54"	EIRB54-48	48"	3	8
60"	EIRB60-48	48"	3	10
72"	EIRB72-48	48"	3	10

60" bed will accommodate  
20, 35, 45 degree troughing rollers

Belt Width	Item Number	Bed Length	Frame QTY.	Bars QTY.
24"	EIRB24-60	60"	3	4
30"	EIRB30-60	60"	3	4
36"	EIRB36-60	60"	3	6
42"	EIRB42-60	60"	3	6
48"	EIRB48-60	60"	3	8
54"	EIRB54-60	60"	3	8
60"	EIRB60-60	60"	3	10
72"	EIRB72-60	60"	3	10



## 6" Wing Roller & Bracket



Note: Sold in sets of two.

### IMPACT BED Replacement Parts

Belt Width	Item Number
24"	EIBWRA6-24
30"	EIBWRA6-30
36"	EIBWRA6-36
42"	EIBWRA6-42
48"	EIBWRA6-48
54"	EIBWRA6-54
60"	EIBWRA6-60
72"	EIBWRA6-72

## Impact Bars



### IMPACT BED Replacement Parts

Bar Length	Item Number
42"	EIBR-42
48"	EIBR-48
54"	EIBR-54
60"	EIBR-60

# BELT SUPPORT

## Slider Bed



48" bed will accommodate  
20, 35, 45 degree troughing rollers

Belt Width	Item Number	Bed Length	Frame QTY.	Bars QTY.
24"	ESLB24-48	48"	3	6
30"	ESLB30-48	48"	3	6
36"	ESLB36-48	48"	3	9
42"	ESLB42-48	48"	3	9
48"	ESLB48-48	48"	3	12
54"	ESLB54-48	48"	3	12
60"	ESLB60-48	48"	3	15
72"	ESLB72-48	48"	3	15

60" bed will accommodate  
20, 35, 45 degree troughing rollers

Belt Width	Item Number	Bed Length	Frame QTY.	Bars QTY.
24"	ESLB24-60	60"	3	6
30"	ESLB30-60	60"	3	6
36"	ESLB36-60	60"	3	9
42"	ESLB42-60	60"	3	9
48"	ESLB48-60	60"	3	12
54"	ESLB54-60	60"	3	12
60"	ESLB60-60	60"	3	15
72"	ESLB72-60	60"	3	15

## Slide & Roll Bed

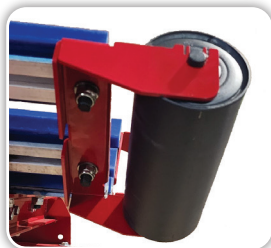


48" bed will accommodate  
20, 35, 45 degree troughing rollers

Belt Width	Item Number	Bed Length	Frame QTY.	Bars QTY.
24"	ESRB24-48	48"	3	4
30"	ESRB30-48	48"	3	4
36"	ESRB36-48	48"	3	6
42"	ESRB42-48	48"	3	6
48"	ESRB48-48	48"	3	8
54"	ESRB54-48	48"	3	8
60"	ESRB60-48	48"	3	10
72"	ESRB72-48	48"	3	10

60" bed will accommodate  
20, 35, 45 degree troughing rollers

Belt Width	Item Number	Bed Length	Frame QTY.	Bars QTY.
24"	ESRB24-60	60"	3	4
30"	ESRB30-60	60"	3	4
36"	ESRB36-60	60"	3	6
42"	ESRB42-60	60"	3	6
48"	ESRB48-60	60"	3	8
54"	ESRB54-60	60"	3	8
60"	ESRB60-60	60"	3	10
72"	ESRB72-60	60"	3	10



## 5" Wing Roller & Bracket



Note: Sold in sets of two.

### SLIDE AND ROLL BED Replacement Parts

Belt Width	Item Number
24"	ESBWRA5-24
30"	ESBWRA5-30
36"	ESBWRA5-36
42"	ESBWRA5-42
48"	ESBWRA5-48
54"	ESBWRA5-54
60"	ESBWRA5-60
72"	ESBWRA5-72

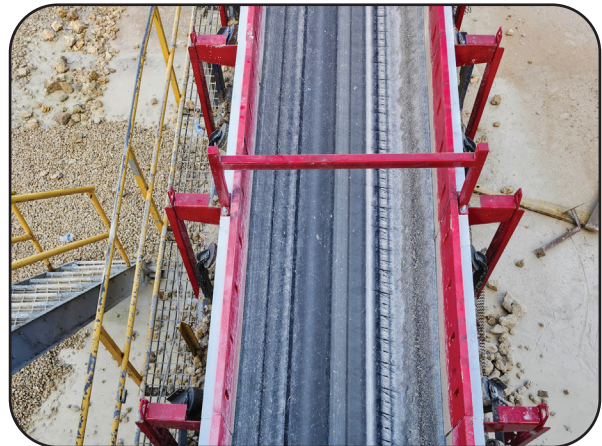
## Slider Bars



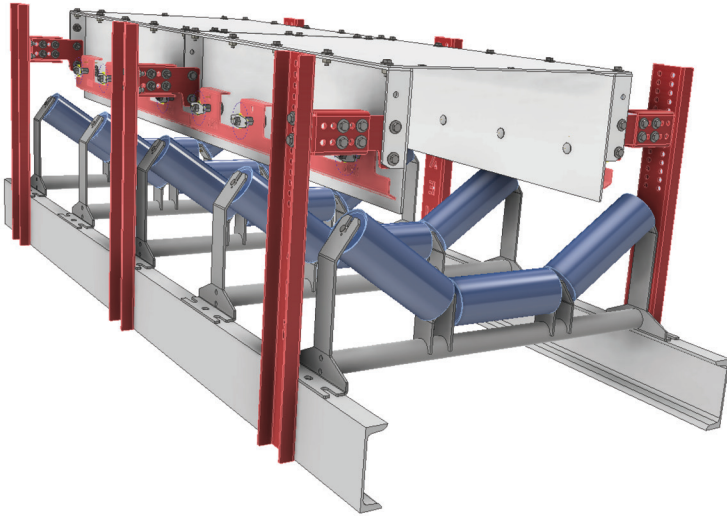
### SLIDE AND ROLL BED Replacement Parts

Bar Length	Item Number
42"	ESB125-42
48"	ESB125-48
54"	ESB125-54
60"	ESB125-60

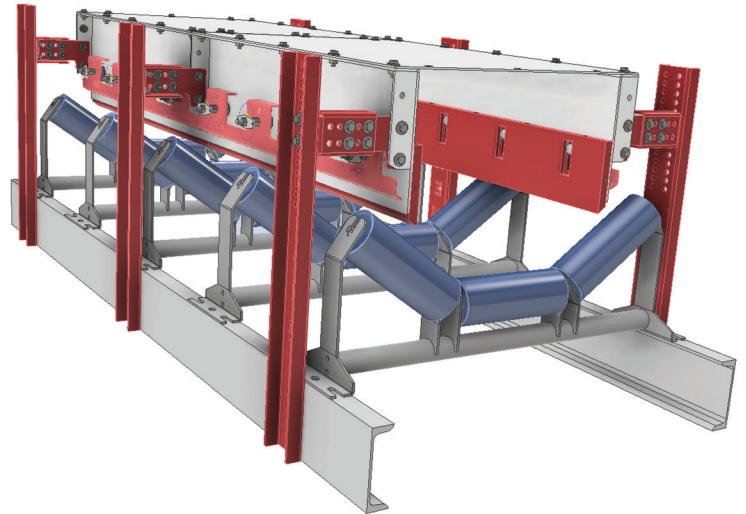
# DUST CONTROL AND BULK MATERIAL CONTAINMENT SYSTEMS



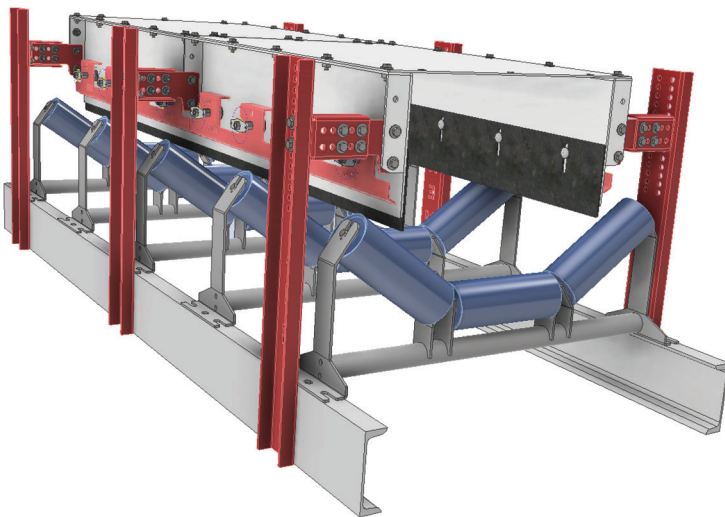
# DUST CONTROL AND BULK MATERIAL CONTAINMENT SYSTEMS



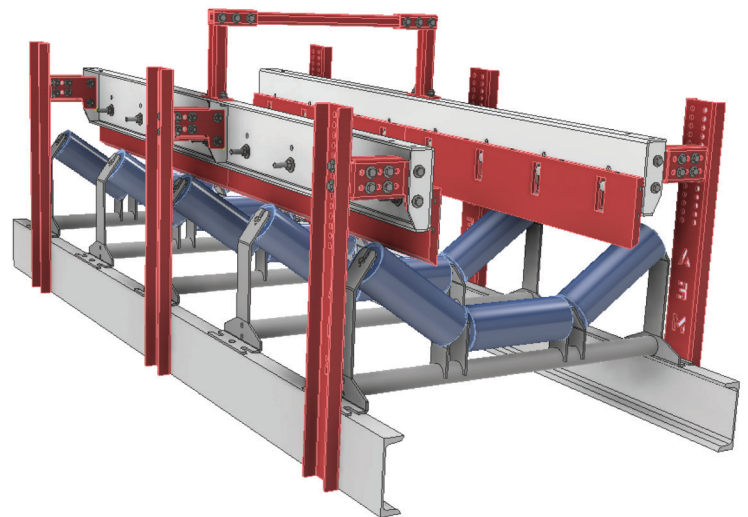
DC Wall with Clamp



DC Wall with Clamp & Canoe Liner



DC Wall with Clamp & AR Liner



BMC

For more information see our Dust Control / Bulk Material  
Containment Systems Worksheet and Brochure

IT'S A NEW ERA OF  
**INNOVATION**  
AT AMERICAN EAGLE  
MANUFACTURING

DELTA  FLEX™ M-Flex®

EAGLE CLAW CLAMP

**BLUE-FLEX.**  **AG FLEX.**

OMEGA SEAL

**SNAPFLEX**

American Eagle Manufacturing LLC  
866 713 8985  
252 633 0603  
85 Taberna Way  
New Bern, North Carolina 28562  
[AmericanEagleManufacturing.com](http://AmericanEagleManufacturing.com)

***EAGLE EDGE USA***

